



MLS 5136492 Land

**\$199,900**

TBD County Road 29  
Pequot Lakes MN 56472

#### Description

Must see 80 acre parcel in prime location 5 minutes from Gull Lake, 2 minutes from the Hunts Point Shooting Club. Outdoorsman's paradise with mature oak trees, 6 deer stands, trails, duck pond with blind already set up. Truly a great opportunity to build or use for recreation.

#### Additional Details

Area: Cass  
Acres: 79.500  
Lot Dimensions: 1320x2640x2640x1320  
Taxes: \$578  
Taxes w Assess: \$578  
Tax Year: 2018

#### Additional Features

**Improvements:** None **Land Inclusions:** For Sale Sign **Topography:** Rolling **On Site Utilities:** None **Available Utilities:** None

#### Driving Directions

Go north of Nisswa on Hwy 371 to left on County Road 29 for 6 miles to sign and property on right (north side of the road).



Listed By: Exit Lakes Realty Premier

Real estate information provided by members of Greater Lakes Association of Realtors. ©2018 Greater Lakes MLS. Real estate information is deemed reliable but not guaranteed. Disclaimer: All properties are subject to prior sale, change or withdrawal. Please call for latest updates.

scan for more info & listings from [www.AffinityRealEstate.com](http://www.AffinityRealEstate.com)



This Listing



New Today



Foreclosures



MLS Search

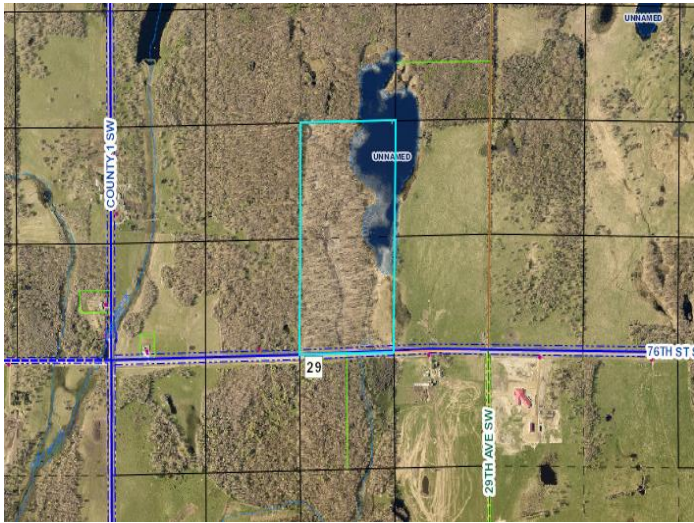
**Call Affinity Real Estate**

**218-237-3333**

[info@affinityrealestate.com](mailto:info@affinityrealestate.com)



Affinity Real Estate • 600 Park Avenue South • Park Rapids MN 56470



website : [www.AffinityRealEstate.com](http://www.AffinityRealEstate.com) • email : [info@AffinityRealEstate.com](mailto:info@AffinityRealEstate.com) • office : 218-237-3333 • fax : 218-237-3377

**\$199,900**



**MLS 5136492 Land**  
**TBD County Road 29**  
**Pequot Lakes MN 56472**