



MLS 5136799 Lake Lot

**\$115,000**

tbd County 39  
Laporte MN 56461

Kabekona Lake  
150 ft Lake Frontage



© RMLSMN

© RMLSMN

**Description**

150' and 3 acres on Kabekona Lake, with owner financing available! This oversized lot offers a level building site, excellent privacy, and plenty of room for outbuildings. Kabekona Lake is known for its outstanding walleye fishing, crystal clear waters, and scenic up north beauty! No covenants, build your dream home or start enjoying lake living with your camper! Driveway and building site are brushed out for you. Attractive owner financing available!

**Additional Details**

Area: Hubbard  
Acres: 3.000  
Lot Dimensions: 150x780x150x801  
Taxes: \$962  
Taxes w Assess: \$962  
Tax Year: 2018

**Additional Features**

**Lake Bottom:** Sand **Waterfront View:** Lake, South **Improvements:** Paved Streets **Land Inclusions:** Platted, Abstract, For Sale Sign  
**Topography:** Level **On Site Utilities:** Electric **Available Utilities:** None

**Driving Directions**

From Walker north on 371, left on County Road 38, left on County 39, follow County 39 for 3.3 miles to property on left. In between fire numbers 35617 and 35633.



Listed By: Bill Hansen Realty/Longville

Real estate information provided by members of Greater Lakes Association of Realtors. ©2018 Greater Lakes MLS. Real estate information is deemed reliable but not guaranteed. Disclaimer: All properties are subject to prior sale, change or withdrawal. Please call for latest updates.

scan for more info & listings from [www.AffinityRealEstate.com](http://www.AffinityRealEstate.com)



This Listing



New Today



Foreclosures



MLS Search

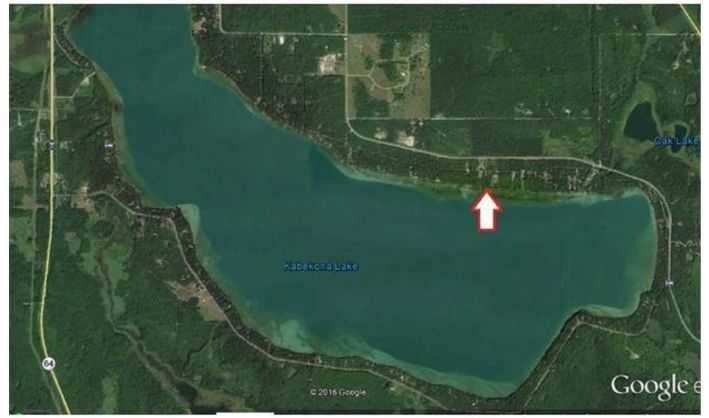
**Call Affinity Real Estate**

**218-237-3333**

[info@affinityrealestate.com](mailto:info@affinityrealestate.com)



Affinity Real Estate • 600 Park Avenue South • Park Rapids MN 56470



website : [www.AffinityRealEstate.com](http://www.AffinityRealEstate.com) • email : [info@AffinityRealEstate.com](mailto:info@AffinityRealEstate.com) • office : 218-237-3333 • fax : 218-237-3377

**\$115,000**



**MLS 5136799 Lake Lot  
tbd County 39  
Laporte MN 56461**