



MLS 5755064 Lake Home

\$303,900

1,162 sq ft
2 bedrooms
2 baths

715 Lake Shore Drive
Bemidji MN 56601

Waterfront: Bemidji (main lake)

Status: Hold

Description:

Welcome to Bemidji's premier condominium development on the South Shore of Lake Bemidji! The Bixby offers secure indoor parking, two elevators, triple pane windows, soundproof insulation, and private balconies. Quartz countertops and Onyx Shower systems are in every unit. Association fee will include natural gas, water, sewer and refuse. This floor plan, 'The Bemidji', offers 2 bedrooms 2 baths and 1162 sf. Unit 105 is located on the first floor with south facing views. The Bemidji unit is on both floors with either lake or south facing views. Stress free living ~ no shoveling, no mowing, no worry when you go on vacation ~ living here may be a life-changer! Schedule your showing today!

Additional Details:

Year Built	2022
Lot Dimensions	348x228
Garage Stalls	1
School District	31
Taxes	\$982
Taxes with Assessments	\$982
Tax Year	2023

Additional Features:

Basement: None **Fuel:** Electric **Garage:** 1 **Heat:** Heat Pump **Sewer:** City Sewer/Connected **Water:** City Water/Connected **Air Conditioning:** Ductless Mini-Split

Driving Directions:

East on 1st ST E to Central Ave SE. Left (north) on Central Ave through the traffic circle to Lake Shore Dr NE.



Listed By:
Lake-N-Woods Realty, Inc.

Affinity Real Estate Inc. participates in the Regional Multiple Listing Service of Minnesota, Inc Broker Reciprocity (sm) program, allowing us to display other broker's listings on our website. All properties are subject to prior sale, change or withdrawal.



Call Affinity Real Estate

218-237-3333

info@affinityrealestate.com



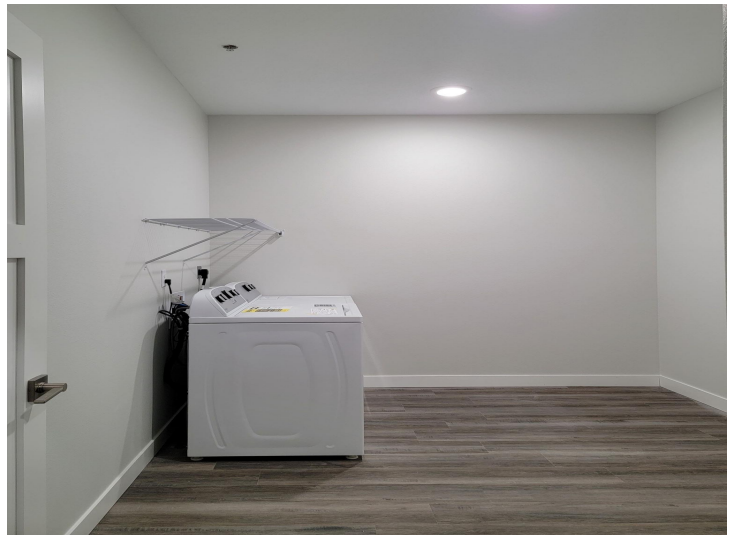
Affinity Real Estate - 600 Park Avenue South - Park Rapids MN 56470



website: www.AffinityRealEstate.com | email: info@affinityrealestate.com | office: 218-237-3333 | fax: 218-237-3377



\$303,900
 MLS 5755064 Lake Home
 715 Lake Shore Drive
 Bemidji MN 56601



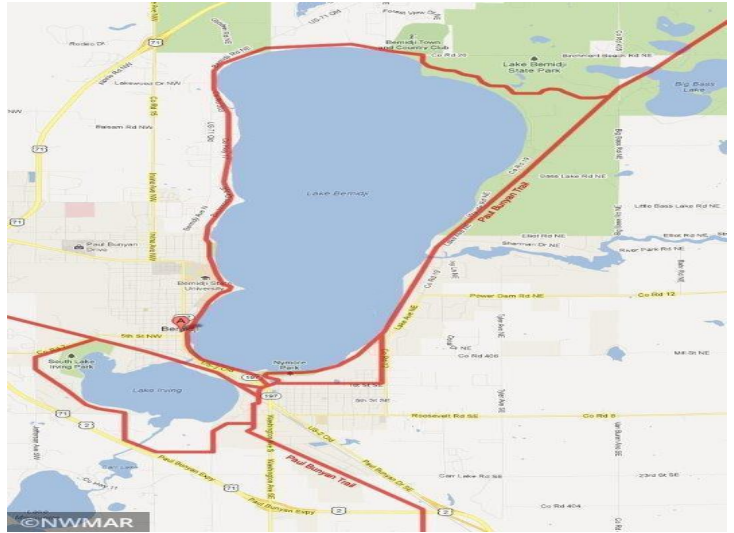
The Bemidji



website: www.AffinityRealEstate.com | email: info@affinityrealestate.com | office: 218-237-3333 | fax: 218-237-3377

Affinity
REAL ESTATE INC

\$303,900
MLS 5755064 Lake Home
715 Lake Shore Drive
Bemidji MN 56601



Updated May 30, 2023



LAKE VIEW

\$558,500	215	\$356,900	214	\$273,000	213	\$356,900	212	\$367,607	211	\$558,500
\$247,400	SOLD	SOLD	SOLD	SOLD	SOLD	SOLD	SOLD	SOLD	SOLD	\$247,400
\$237,200	201	\$314,100	202	\$249,900	203	\$314,100	204	\$249,900	205	\$314,100
SOLD	SOLD	SOLD	SOLD	SOLD	SOLD	SOLD	SOLD	SOLD	SOLD	SOLD

LEVEL 2 PLAN

\$233,900	115	\$346,595	114	\$259,708	113	\$336,500	112	\$346,595	111	\$538,500
SOLD	SOLD	SOLD	SOLD	SOLD	SOLD	SOLD	SOLD	SOLD	SOLD	SOLD
\$227,000	101	\$303,900	102	\$239,600	103	\$303,900	104	\$239,600	105	\$303,900
SOLD	SOLD	SOLD	SOLD	SOLD	SOLD	SOLD	SOLD	SOLD	SOLD	SOLD

UNIT 106

LEVEL 1 PLAN



Lake N Woods
Realty, Inc.
1032 Paul Bunyan Drive South
(218) 751-2538

www.lakenwoods.com

website: www.AffinityRealEstate.com | email: info@affinityrealestate.com | office: 218-237-3333 | fax: 218-237-3377



\$303,900
MLS 5755064 Lake Home
715 Lake Shore Drive
Bemidji MN 56601