



MLS 6274505 Commercial

\$18

119 Paul Bunyan Drive
Bemidji MN 56601

Status: Closed



Description:

Spacious and updated office space available with outstanding visibility! Five large offices, large reception area, and two ADA bathrooms. Additional 6 parking spaces available behind building (Hardee's lot). Lease rate is per/sf plus taxes, CAM, and utilities.

Additional Details:

Year Built	1987
Lot Acres	0.57
Lot Dimensions	107x230
School District	31
Taxes	\$13,794
Taxes with Assessments	\$15,254
Tax Year	2025

Additional Features:

Fuel: Natural Gas **Heat:** Forced Air **Sewer:** City Sewer/Connected **Water:** City Water/Connected **Air Conditioning:** Central Air

Driving Directions:

Corner of Paul Bunyan Drive NW and Bemidji Avenue N, across from CVS Pharmacy and Caribou



Listed By:
Lake-N-Woods Realty

Affinity Real Estate Inc. participates in the Regional Multiple Listing Service of Minnesota, Inc Broker Reciprocity (sm) program, allowing us to display other broker's listings on our website. All properties are subject to prior sale, change or withdrawal.



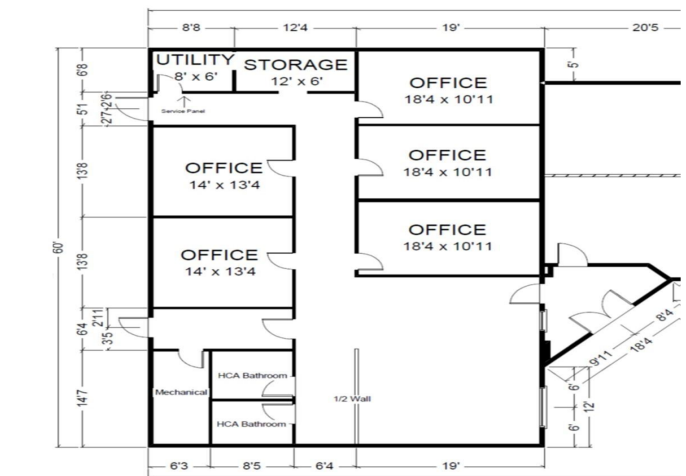
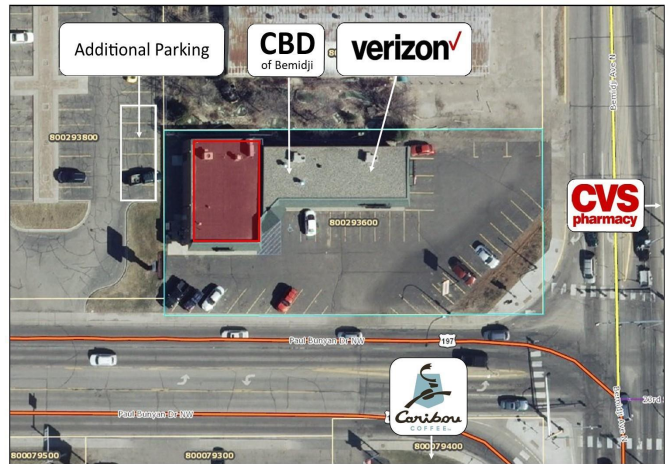
Call Affinity Real Estate

218-237-3333

info@affinityrealestate.com



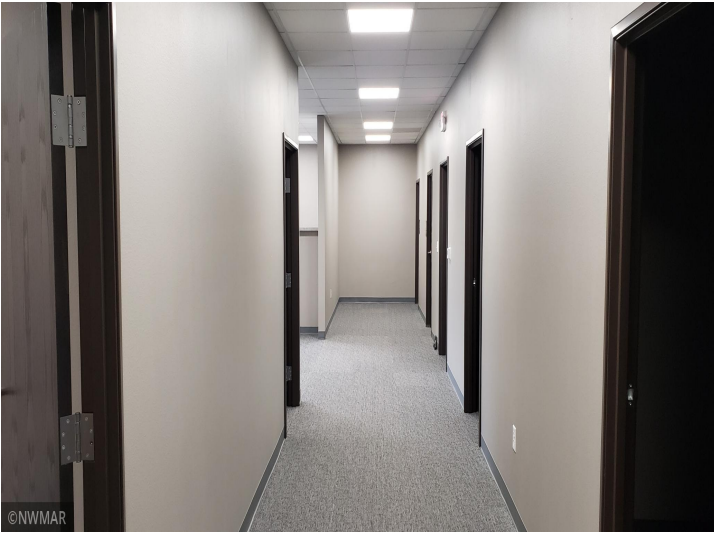
Affinity Real Estate - 600 Park Avenue South - Park Rapids MN 56470



website: www.AffinityRealEstate.com | email: info@affinityrealestate.com | office: 218-237-3333 | fax: 218-237-3377



\$18
 MLS 6274505 Commercial
 119 Paul Bunyan Drive
 Bemidji MN 56601



website: www.AffinityRealEstate.com | email: info@affinityrealestate.com | office: 218-237-3333 | fax: 218-237-3377



\$18
MLS 6274505 Commercial
119 Paul Bunyan Drive
Bemidji MN 56601