



MLS 6473432 Residential

**\$174,500**

2,600 sq ft  
2 bedrooms  
2 baths

705 King Street  
Park Rapids MN 56470

Status: Closed

#### Description:

Really great find in this tight market! Centrally located in the city of Park Rapids one block north of the Holiday Station. 2+ bedrooms with two separate areas of flex space (each about 600 sq. ft.) for a home office, craft room or add a bedroom. One of the flex spaces had previously been used for a daycare with its own half-bath, storage closet and sink. Front porch, two decks and storage above the garage. Basement is warm and dry with a wide staircase for easy access. Lots of vintage character with hardwood under the carpet in the living room. The best part might be the 24 x 40 pole building and two outdoor sheds all on a 150 x 150 city lot right in town. Convenience, lots of room in the house and storage for everything else. Thank you for looking.

#### Additional Details:

Year Built	1948
Lot Acres	0.48
Lot Dimensions	150 x 150
Garage Stalls	2
School District	309
Taxes	\$2,274
Taxes with Assessments	\$2,274
Tax Year	2023

#### Additional Features:

**Basement:** Block **Fuel:** Electric, Natural Gas **Garage:** 2 **Heat:** Forced Air **Sewer:** City Sewer - In Street **Water:** City Water/Connected **Air Conditioning:** Central Air

#### Driving Directions:

One block to the north of the Holiday Station at the corner of Hwy 34 and County Rd. 1 in Park Rapids



Listed By:  
Dane Arthur Real Estate Agency-Park Rapids

Affinity Real Estate Inc. participates in the Regional Multiple Listing Service of Minnesota, Inc Broker Reciprocity (sm) program, allowing us to display other broker's listings on our website. All properties are subject to prior sale, change or withdrawal.



Call Affinity Real Estate

**218-237-3333**

[info@affinityrealestate.com](mailto:info@affinityrealestate.com)



Affinity Real Estate - 600 Park Avenue South - Park Rapids MN 56470



website: [www.AffinityRealEstate.com](http://www.AffinityRealEstate.com) | email: [info@affinityrealestate.com](mailto:info@affinityrealestate.com) | office: 218-237-3333 | fax: 218-237-3377



**\$174,500**  
 MLS 6473432 Residential  
 705 King Street  
 Park Rapids MN 56470



website: [www.AffinityRealEstate.com](http://www.AffinityRealEstate.com) | email: [info@affinityrealestate.com](mailto:info@affinityrealestate.com) | office: 218-237-3333 | fax: 218-237-3377

**Affinity**  
REAL ESTATE INC

**\$174,500**  
MLS 6473432 Residential  
705 King Street  
Park Rapids MN 56470



website: [www.AffinityRealEstate.com](http://www.AffinityRealEstate.com) | email: [info@affinityrealestate.com](mailto:info@affinityrealestate.com) | office: 218-237-3333 | fax: 218-237-3377

**Affinity**  
REAL ESTATE INC

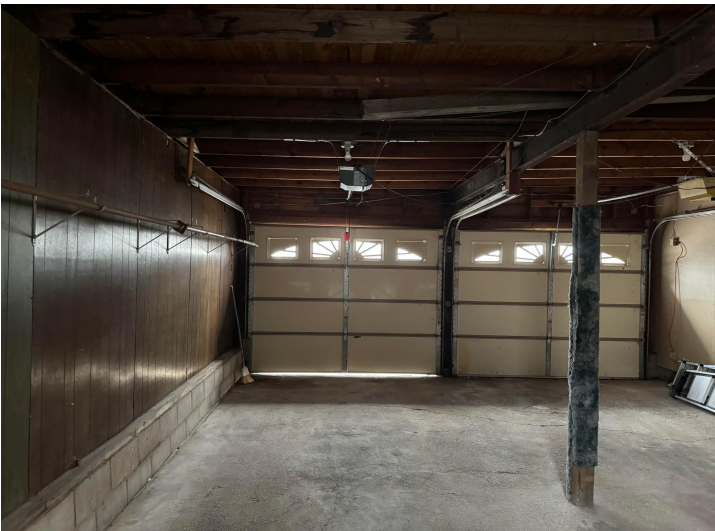
**\$174,500**  
MLS 6473432 Residential  
705 King Street  
Park Rapids MN 56470



website: [www.AffinityRealEstate.com](http://www.AffinityRealEstate.com) | email: [info@affinityrealestate.com](mailto:info@affinityrealestate.com) | office: 218-237-3333 | fax: 218-237-3377

**Affinity**  
REAL ESTATE INC

**\$174,500**  
MLS 6473432 Residential  
705 King Street  
Park Rapids MN 56470



website: [www.AffinityRealEstate.com](http://www.AffinityRealEstate.com) | email: [info@affinityrealestate.com](mailto:info@affinityrealestate.com) | office: 218-237-3333 | fax: 218-237-3377

**Affinity**  
REAL ESTATE INC

**\$174,500**  
MLS 6473432 Residential  
705 King Street  
Park Rapids MN 56470



website: [www.AffinityRealEstate.com](http://www.AffinityRealEstate.com) | email: [info@affinityrealestate.com](mailto:info@affinityrealestate.com) | office: 218-237-3333 | fax:218-237-3377



**\$174,500**  
MLS 6473432 Residential  
705 King Street  
Park Rapids MN 56470