



MLS 6508003 Lake Home

\$399,000

1,584 sq ft
2 bedrooms
2 baths

28843 Hurtig Road
Pequot Lakes MN 56472

Waterfront: Mayo

Status: Canceled

Description:

Welcome to Charliewood. This 2022 build features a beautiful setting in the heart of Lakes Country. Shared lake access to the Mayo/Sibley chain with 4 other neighboring properties. Home features include main-level living, with an additional bedroom and bathroom upstairs accompanying two separate living areas. Warm up and relax in your private sauna after a long day of winter activities. Enjoy the wildlife right out of your back door, yet still enjoy the close proximity to downtown Pequot Lakes.

Additional Details:

Year Built	2022
Lot Acres	1.18
Lot Dimensions	120x511x122x515
Garage Stalls	2
School District	186
Taxes	\$2,705
Taxes with Assessments	\$2,730
Tax Year	2024

Additional Features:

Basement: None **Fuel:** Propane **Garage:** 2 **Heat:** Forced Air **Sewer:** Private Sewer, Tank with Drainage Field **Water:** Private, Well **Air Conditioning:** Central Air

Driving Directions:

From Nisswa North on Hwy 371, left on Hwy 168/64th Street SW, left on Hurtig Road, house on right with sign in the yard.



Listed By:
RE/MAX Advantage Plus

Affinity Real Estate Inc. participates in the Regional Multiple Listing Service of Minnesota, Inc Broker Reciprocity (sm) program, allowing us to display other broker's listings on our website. All properties are subject to prior sale, change or withdrawal.



Call Affinity Real Estate

218-237-3333

info@affinityrealestate.com



Affinity Real Estate - 600 Park Avenue South - Park Rapids MN 56470



website: www.AffinityRealEstate.com | email: info@affinityrealestate.com | office: 218-237-3333 | fax:218-237-3377



\$399,000
MLS 6508003 Lake Home
28843 Hurtig Road
Pequot Lakes MN 56472



website: www.AffinityRealEstate.com | email: info@affinityrealestate.com | office: 218-237-3333 | fax: 218-237-3377

Affinity
REAL ESTATE INC

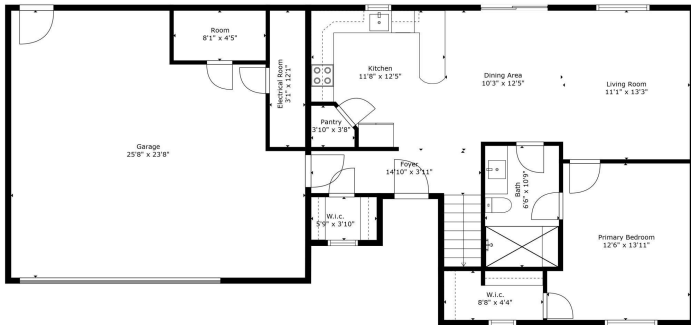
\$399,000
MLS 6508003 Lake Home
28843 Hurtig Road
Pequot Lakes MN 56472



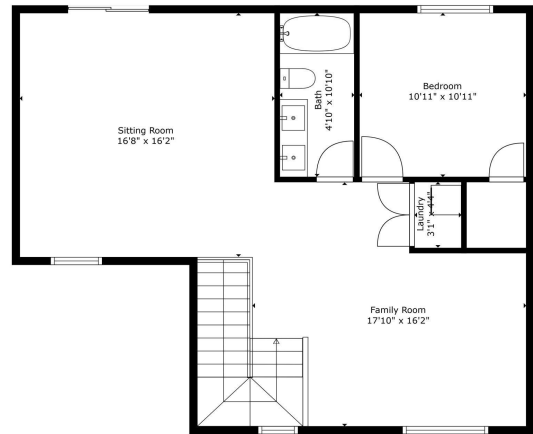
website: www.AffinityRealEstate.com | email: info@affinityrealestate.com | office: 218-237-3333 | fax:218-237-3377



\$399,000
MLS 6508003 Lake Home
28843 Hurtig Road
Pequot Lakes MN 56472



TOTAL: 1584 sq. ft.
 FLOOR 1: 807 sq. ft., FLOOR 2: 777 sq. ft.
 EXCLUDED AREAS: GARAGE: 526 sq. ft., ELECTRICAL ROOM: 39 sq. ft., ROOM: 36 sq. ft.
 Measurements Are Estimated And Are Not A Replacement For A Licensed Surveyor.

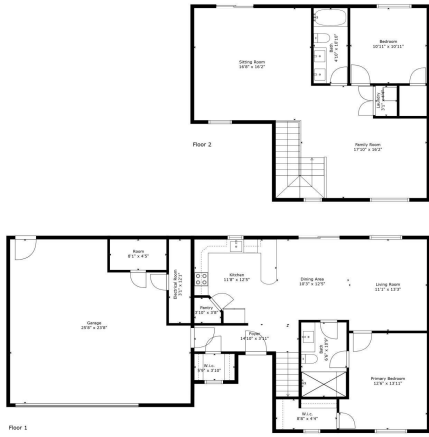


TOTAL: 1584 sq. ft.
 FLOOR 1: 807 sq. ft., FLOOR 2: 777 sq. ft.
 EXCLUDED AREAS: GARAGE: 526 sq. ft., ELECTRICAL ROOM: 39 sq. ft., ROOM: 36 sq. ft.
 Measurements Are Estimated And Are Not A Replacement For A Licensed Surveyor.

website: www.AffinityRealEstate.com | email: info@affinityrealestate.com | office: 218-237-3333 | fax: 218-237-3377



\$399,000
 MLS 6508003 Lake Home
 28843 Hurtig Road
 Pequot Lakes MN 56472



TOTAL: 1584 sq. ft.
 FLOOR 1: 807 sq. ft. FLOOR 2: 777 sq. ft.
 EXCLUDED AREAS: GARAGE: 526 sq. ft. ELECTRICAL ROOM: 39 sq. ft. ROOM: 36 sq. ft.
 Measurements Are Estimated And Are Not A Replacement For A Licensed Surveyor.



website: www.AffinityRealEstate.com | email: info@affinityrealestate.com | office: 218-237-3333 | fax: 218-237-3377



\$399,000
 MLS 6508003 Lake Home
 28843 Hurtig Road
 Pequot Lakes MN 56472



website: www.AffinityRealEstate.com | email: info@affinityrealestate.com | office: 218-237-3333 | fax:218-237-3377



\$399,000
MLS 6508003 Lake Home
28843 Hurtig Road
Pequot Lakes MN 56472