



MLS 6558396 Residential

\$159,900

2,196 sq ft
3 bedrooms
2 baths

320 2nd Street
Wadena MN 56482

Status: Closed

Description:

EXTRA GARAGE/SHOPMain level laundry area, small office area, attached 2 car garage , 3 main level bedrooms

Additional Details:

Year Built	1959
Lot Acres	0.17
Lot Dimensions	50 x 150
Garage Stalls	2
School District	2155
Taxes	\$1,872
Taxes with Assessments	\$1,932
Tax Year	2023

Additional Features:

Fuel: Natural Gas, Oil **Heat:** Forced Air

Driving Directions:

From the intersection of US Hwy 10 and 71 in Wadena.: East on Us Hwy 10 2 block to 2nd St. NE: North on 2nd St NE 3 block to Deerwood Ave NE, subject on your right on the corner



Listed By:
The Gores Company

Affinity Real Estate Inc. participates in the Regional Multiple Listing Service of Minnesota, Inc Broker Reciprocity (sm) program, allowing us to display other broker's listings on our website. All properties are subject to prior sale, change or withdrawal.



Call Affinity Real Estate

218-237-3333

info@affinityrealestate.com



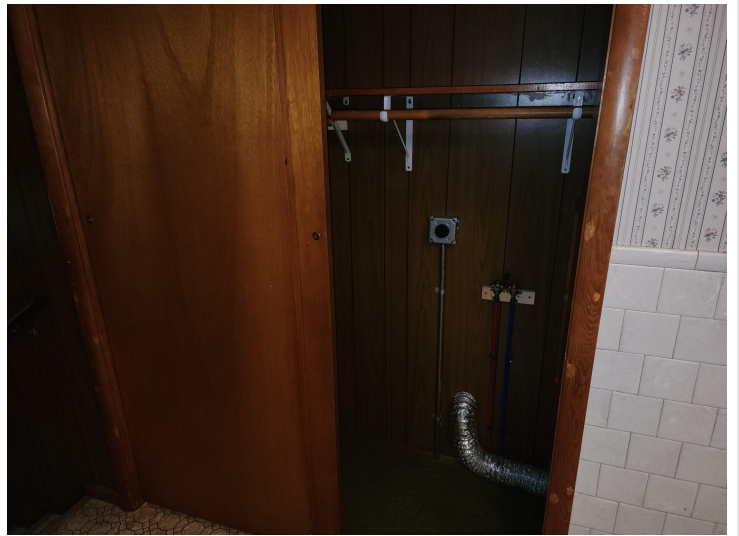
Affinity Real Estate - 600 Park Avenue South - Park Rapids MN 56470



website: www.AffinityRealEstate.com | email: info@affinityrealestate.com | office: 218-237-3333 | fax:218-237-3377

Affinity
REAL ESTATE INC

\$159,900
MLS 6558396 Residential
320 2nd Street
Wadena MN 56482



website: www.AffinityRealEstate.com | email: info@affinityrealestate.com | office: 218-237-3333 | fax:218-237-3377



\$159,900
MLS 6558396 Residential
320 2nd Street
Wadena MN 56482



website: www.AffinityRealEstate.com | email: info@affinityrealestate.com | office: 218-237-3333 | fax:218-237-3377



\$159,900
MLS 6558396 Residential
320 2nd Street
Wadena MN 56482