



MLS 6562916 Residential

**\$479,000**

1,795 sq ft  
4 bedrooms  
2 baths

8393 Flower Trail  
Pequot Lakes MN 56472

Status: Closed

#### Description:

Welcome to your dream patio home, nestled on 2.79-acres! Experience the epitome of 1 lvl living in this exquisite 4-bed, 2-bath home. The meticulous attention to detail will captivate you. Step inside and be greeted by 9-ft ceilings with inlaid pine-filled trays, a stunning stone fireplace and handmade pine doors that seamlessly tie the space together. The gourmet kitchen boasts cherry cabinets, granite countertops and stainless steel appliances, perfect for any culinary enthusiast. The private primary bed features an ensuite bath and expansive closets, offering a serene retreat. Enjoy the beauty of nature and wildlife from the tall windows or the covered patio just outside the living room, providing a perfect spot to unwind. The large, 3-stall finished garage is insulated and heated, offering ample storage. While this home offers privacy and tranquility, it's also conveniently located just minutes from Pelican Lake, golf courses, restaurants and trails. Don't miss the chance to make it yours

#### Additional Details:

Year Built	2022
Lot Acres	2.79
Lot Dimensions	344x255x509x334
Garage Stalls	3
School District	186
Taxes	\$3,145
Taxes with Assessments	\$3,170
Tax Year	2023

#### Additional Features:

**Fuel:** Natural Gas **Heat:** Forced Air

#### Driving Directions:

Hwy 371 N from Baxter, MN approx 18 miles. Exit onto CR11/Breezy Point. Take 1st Exit on Roundabout onto CR 11. Go 4.1 miles. Take a left on CR 11 and go 1.3 miles. Left onto Autumn Lane. Right onto Summer DR. Left into Sunny Lane. Left onto Flower Trail.



Listed By:  
eXp Realty

Affinity Real Estate Inc. participates in the Regional Multiple Listing Service of Minnesota, Inc Broker Reciprocity (sm) program, allowing us to display other broker's listings on our website. All properties are subject to prior sale, change or withdrawal.



**Call Affinity Real Estate**

**218-237-3333**

**info@affinityrealestate.com**



**Affinity Real Estate - 600 Park Avenue South - Park Rapids MN 56470**





website: [www.AffinityRealEstate.com](http://www.AffinityRealEstate.com) | email: [info@affinityrealestate.com](mailto:info@affinityrealestate.com) | office: 218-237-3333 | fax: 218-237-3377



**\$479,000**  
 MLS 6562916 Residential  
 8393 Flower Trail  
 Pequot Lakes MN 56472



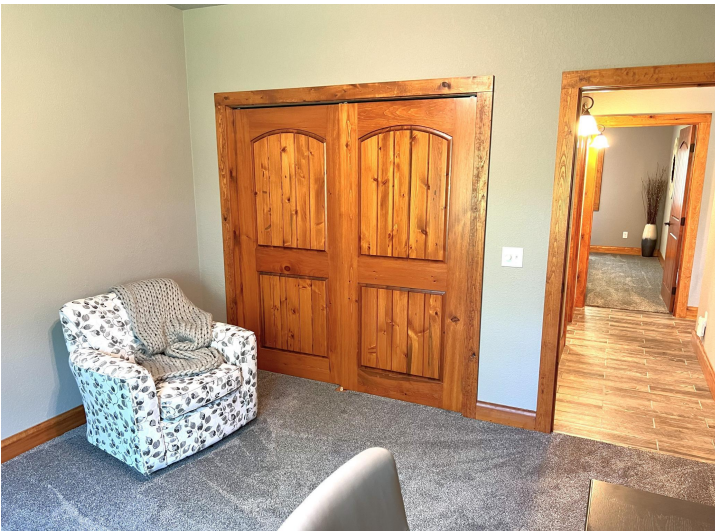


website: [www.AffinityRealEstate.com](http://www.AffinityRealEstate.com) | email: [info@affinityrealestate.com](mailto:info@affinityrealestate.com) | office: 218-237-3333 | fax: 218-237-3377

**Affinity**  
REAL ESTATE INC

**\$479,000**  
MLS 6562916 Residential  
8393 Flower Trail  
Pequot Lakes MN 56472



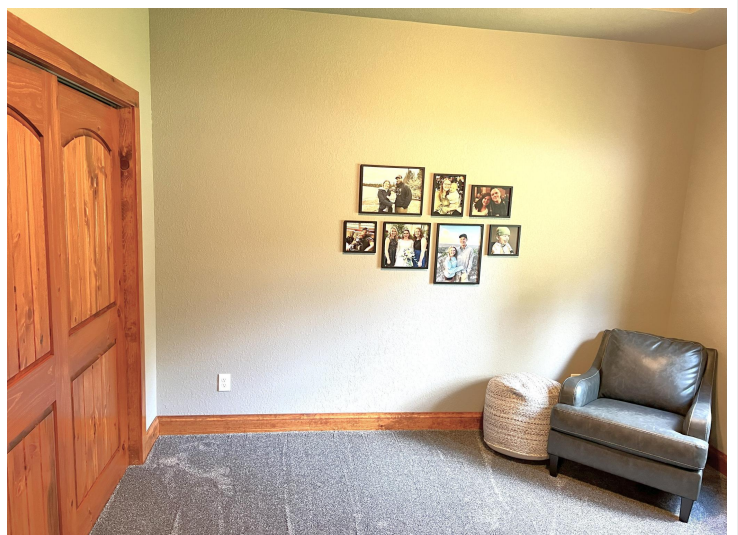


website: [www.AffinityRealEstate.com](http://www.AffinityRealEstate.com) | email: [info@affinityrealestate.com](mailto:info@affinityrealestate.com) | office: 218-237-3333 | fax: 218-237-3377

**Affinity**  
REAL ESTATE INC

**\$479,000**  
MLS 6562916 Residential  
8393 Flower Trail  
Pequot Lakes MN 56472



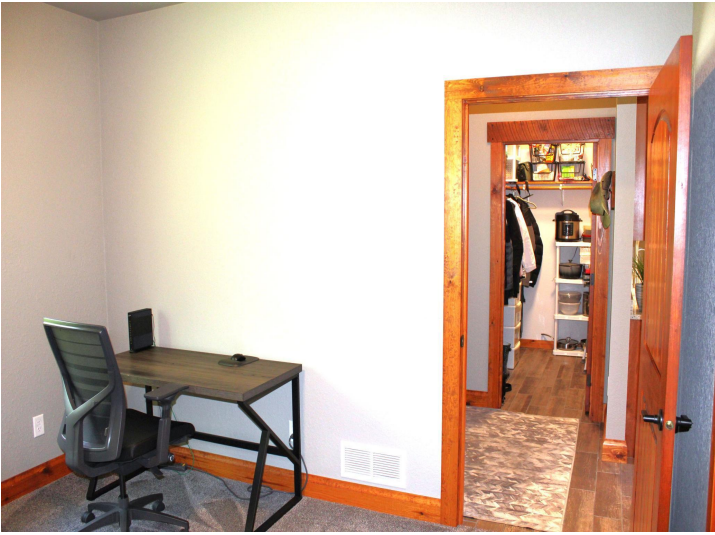


website: [www.AffinityRealEstate.com](http://www.AffinityRealEstate.com) | email: [info@affinityrealestate.com](mailto:info@affinityrealestate.com) | office: 218-237-3333 | fax: 218-237-3377

**Affinity**  
REAL ESTATE INC

**\$479,000**  
MLS 6562916 Residential  
8393 Flower Trail  
Pequot Lakes MN 56472





website: [www.AffinityRealEstate.com](http://www.AffinityRealEstate.com) | email: [info@affinityrealestate.com](mailto:info@affinityrealestate.com) | office: 218-237-3333 | fax: 218-237-3377

**Affinity**  
REAL ESTATE INC

**\$479,000**  
MLS 6562916 Residential  
8393 Flower Trail  
Pequot Lakes MN 56472





website: [www.AffinityRealEstate.com](http://www.AffinityRealEstate.com) | email: [info@affinityrealestate.com](mailto:info@affinityrealestate.com) | office: 218-237-3333 | fax: 218-237-3377



**\$479,000**  
MLS 6562916 Residential  
8393 Flower Trail  
Pequot Lakes MN 56472



