



MLS 6563411 Residential

\$199,889

2,400 sq ft
4 bedrooms
2 baths

7605 Balsam Road
Bemidji MN 56601

Status: Canceled

Description:

There is plenty to love about this HOME. Location is prime on Bemidji's west end. Offering privacy and convenience that is coveted in our local housing market. Inside you will find four bedrooms, and two baths. The living room is spacious with hardwood floors, and a fireplace. This property is sound with important updates like siding, windows, and a newer roof. Many buyers will seize the opportunity to build some sweat equity with cosmetic updates. This one is a blank slate for customizing to your own needs. Previously a rental, but suitable for a primary residence as well. Schedule your tour today!

Additional Details:

Year Built	1950
Lot Acres	3.92
Lot Dimensions	177x330x148x317x328x655
Garage Stalls	1
School District	31
Taxes	\$2,650
Taxes with Assessments	\$2,650
Tax Year	2023

Additional Features:

Basement: Block **Fuel:** Propane **Garage:** 1 **Heat:** Forced Air **Sewer:** Private Sewer **Water:** Private **Air Conditioning:** Central Air

Driving Directions:

From Bemidji, Go West on HWY 2 to 89, go North, follow to Balsam, go Right to address.



Listed By:
RE/MAX Results - Nisswa

Affinity Real Estate Inc. participates in the Regional Multiple Listing Service of Minnesota, Inc Broker Reciprocity (sm) program, allowing us to display other broker's listings on our website. All properties are subject to prior sale, change or withdrawal.



Call Affinity Real Estate

218-237-3333

info@affinityrealestate.com



Affinity Real Estate - 600 Park Avenue South - Park Rapids MN 56470



website: www.AffinityRealEstate.com | email: info@affinityrealestate.com | office: 218-237-3333 | fax: 218-237-3377

Affinity
REAL ESTATE INC

\$199,889

MLS 6563411 Residential
7605 Balsam Road
Bemidji MN 56601



website: www.AffinityRealEstate.com | email: info@affinityrealestate.com | office: 218-237-3333 | fax: 218-237-3377

Affinity
REAL ESTATE INC

\$199,889
MLS 6563411 Residential
7605 Balsam Road
Bemidji MN 56601



website: www.AffinityRealEstate.com | email: info@affinityrealestate.com | office: 218-237-3333 | fax: 218-237-3377

Affinity
REAL ESTATE INC

\$199,889
MLS 6563411 Residential
7605 Balsam Road
Bemidji MN 56601



website: www.AffinityRealEstate.com | email: info@affinityrealestate.com | office: 218-237-3333 | fax: 218-237-3377

Affinity
REAL ESTATE INC

\$199,889
MLS 6563411 Residential
7605 Balsam Road
Bemidji MN 56601



website: www.AffinityRealEstate.com | email: info@affinityrealestate.com | office: 218-237-3333 | fax: 218-237-3377

Affinity
REAL ESTATE INC

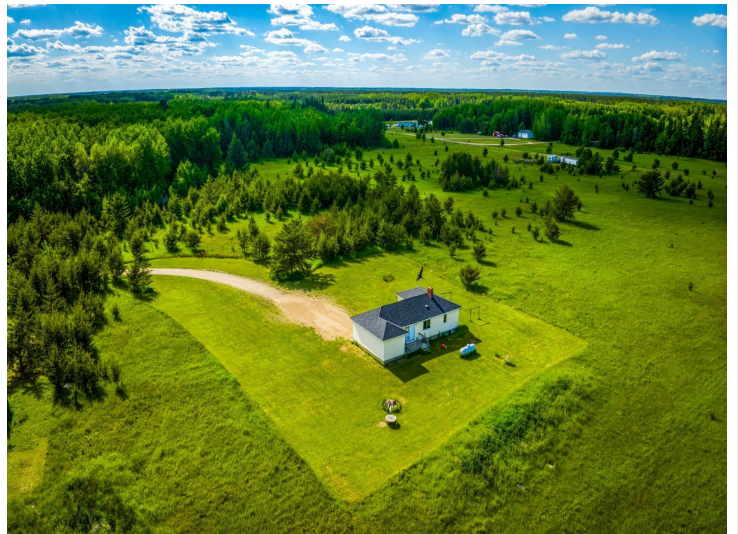
\$199,889
MLS 6563411 Residential
7605 Balsam Road
Bemidji MN 56601



website: www.AffinityRealEstate.com | email: info@affinityrealestate.com | office: 218-237-3333 | fax: 218-237-3377



\$199,889
MLS 6563411 Residential
7605 Balsam Road
Bemidji MN 56601



website: www.AffinityRealEstate.com | email: info@affinityrealestate.com | office: 218-237-3333 | fax: 218-237-3377



\$199,889
 MLS 6563411 Residential
 7605 Balsam Road
 Bemidji MN 56601



website: www.AffinityRealEstate.com | email: info@affinityrealestate.com | office: 218-237-3333 | fax: 218-237-3377



\$199,889
MLS 6563411 Residential
7605 Balsam Road
Bemidji MN 56601