



MLS 6576299 Land

\$45,000

0.07 Acres
Subdivided

30319 Whitebirch Way
Pequot Lakes MN 56472

Status: Expired

Description:

Are you ready to enjoy camping life? Here's your opportunity to own your very own "Favorite Summer Place." Privately owned lot in Exclusive Whitebirch RV and Camping Resort, a gated community. Located in a quiet area near playground and walking distance to pool, hot tub and wading pool for the kids. Included in this sale is a 8x8 shed, an EZ Go Electric Golf Cart with charger, and a 1997 34" Jayco Eagle Travel Trailer with 1 slide out, includes appliances and a built in stereo. Purchase includes the County Club membership at Breezy Point Resort, a \$500 value. Membership includes discounts at Resort Amenities, including boat marina, restaurants, gift and pro shops, and golf courses

Additional Details:

Lot Acres	0.07
Lot Dimensions	40x80x40x80
School District	186
Taxes	\$282
Taxes with Assessments	\$282
Tax Year	2023

Additional Features:

Driving Directions:

From Breezy Point Front Gates, go south approximately 2 blocks to Dove Str. Turn right onto Dove Street and go west approximately 2 miles to 7070 Dove St



Listed By:
Breezy Point Real Estate

Affinity Real Estate Inc. participates in the Regional Multiple Listing Service of Minnesota, Inc Broker Reciprocity (sm) program, allowing us to display other broker's listings on our website. All properties are subject to prior sale, change or withdrawal.



Call Affinity Real Estate

218-237-3333

info@affinityrealestate.com



Affinity Real Estate - 600 Park Avenue South - Park Rapids MN 56470



website: www.AffinityRealEstate.com | email: info@affinityrealestate.com | office: 218-237-3333 | fax: 218-237-3377



\$45,000
 MLS 6576299 Land
 30319 Whitebirch Way
 Pequot Lakes MN 56472



website: www.AffinityRealEstate.com | email: info@affinityrealestate.com | office: 218-237-3333 | fax: 218-237-3377



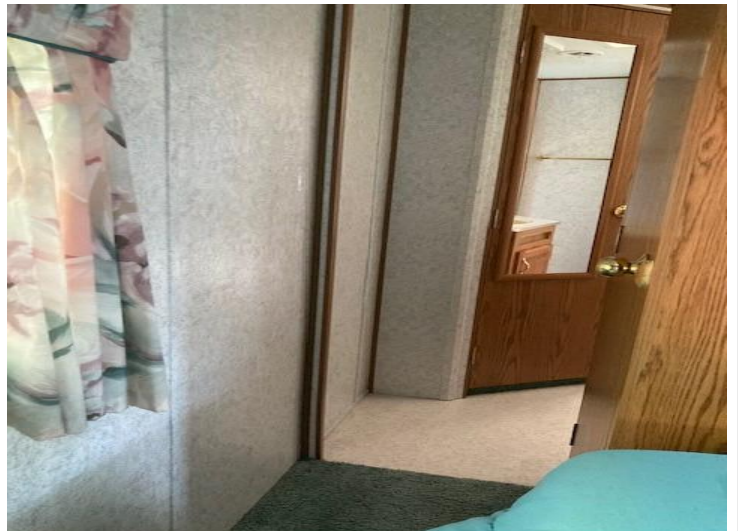
\$45,000
 MLS 6576299 Land
 30319 Whitebirch Way
 Pequot Lakes MN 56472



website: www.AffinityRealEstate.com | email: info@affinityrealestate.com | office: 218-237-3333 | fax: 218-237-3377



\$45,000
 MLS 6576299 Land
 30319 Whitebirch Way
 Pequot Lakes MN 56472



website: www.AffinityRealEstate.com | email: info@affinityrealestate.com | office: 218-237-3333 | fax: 218-237-3377



\$45,000
 MLS 6576299 Land
 30319 Whitebirch Way
 Pequot Lakes MN 56472