



MLS 6576624 Residential

\$120,000

1,776 sq ft
3 bedrooms
2 baths

506 21st Street
Bemidji MN 56601

Status: Active

Description:

Great location in town, fenced, very private corner lot available. Garage is large and spacious, two gates separate gates for entering the back yard. Home is large and has lots of potential, bring your ideas and make it your dream home.

Additional Details:

Year Built	1969
Lot Acres	0.3
Lot Dimensions	130x100x130x100
Garage Stalls	2
School District	31
Taxes	\$1,794
Taxes with Assessments	\$1,794
Tax Year	2023

Additional Features:

Basement: Egress Window(s), Full **Fuel:** Natural Gas **Garage:** 2 **Heat:** Forced Air **Sewer:** City Sewer/Connected **Water:** City Water/Connected **Air Conditioning:** Wall Unit(s)

Driving Directions:

From Paul Bunyan Dr go South on Irvine Ave, take a right on 21st Street. Home will be on your left.



Listed By:
Tim Cornelius Realty LLC

Affinity Real Estate Inc. participates in the Regional Multiple Listing Service of Minnesota, Inc Broker Reciprocity (sm) program, allowing us to display other broker's listings on our website. All properties are subject to prior sale, change or withdrawal.



Call Affinity Real Estate

218-237-3333

info@affinityrealestate.com



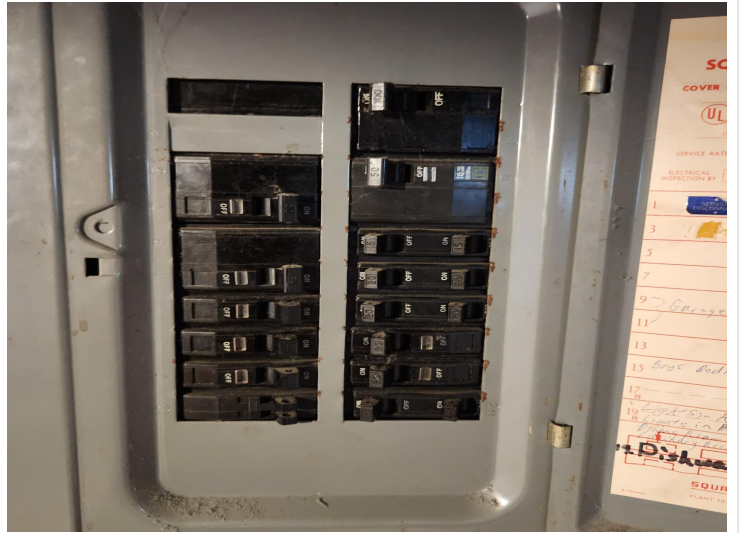
Affinity Real Estate - 600 Park Avenue South - Park Rapids MN 56470



website: www.AffinityRealEstate.com | email: info@affinityrealestate.com | office: 218-237-3333 | fax:218-237-3377

Affinity
REAL ESTATE INC

\$120,000
MLS 6576624 Residential
506 21st Street
Bemidji MN 56601



website: www.AffinityRealEstate.com | email: info@affinityrealestate.com | office: 218-237-3333 | fax:218-237-3377



\$120,000
MLS 6576624 Residential
506 21st Street
Bemidji MN 56601