



MLS 6594328 Commercial

\$162,500

106 4th Street
Staples MN 56479

Status: Closed

Description:

Commercial property located in downtown Staples with easy access off busy Hwy 10. Property features (2) upper level 3 bedroom/2 bathroom apartments with new flooring, kitchen cabinets/counter tops, plumbing/electric, bathroom vanities, fixtures and fresh paint. Large main level unit with 38x74 open area with round top windows overlooking main street, 12x8 office area, 38x17 and 40x18 additional spaces and restrooms. Second main level space is 20x120 and offers knotty pine, real hardwood flooring and restroom. Separate utilities for all 4 units. 24 hour noticed required for all showings.

Additional Details:

Year Built	1970
Lot Acres	0.21
Lot Dimensions	66x138
School District	2170
Taxes	\$5,276
Taxes with Assessments	\$5,276
Tax Year	2023

Additional Features:

Fuel: Electric **Heat:** Forced Air **Sewer:** City Sewer/Connected **Water:** City Water/Connected

Driving Directions:

Hwy 10 Staples, North on 4th Street.



Listed By:
Edina Realty, Inc.

Affinity Real Estate Inc. participates in the Regional Multiple Listing Service of Minnesota, Inc Broker Reciprocity (sm) program, allowing us to display other broker's listings on our website. All properties are subject to prior sale, change or withdrawal.



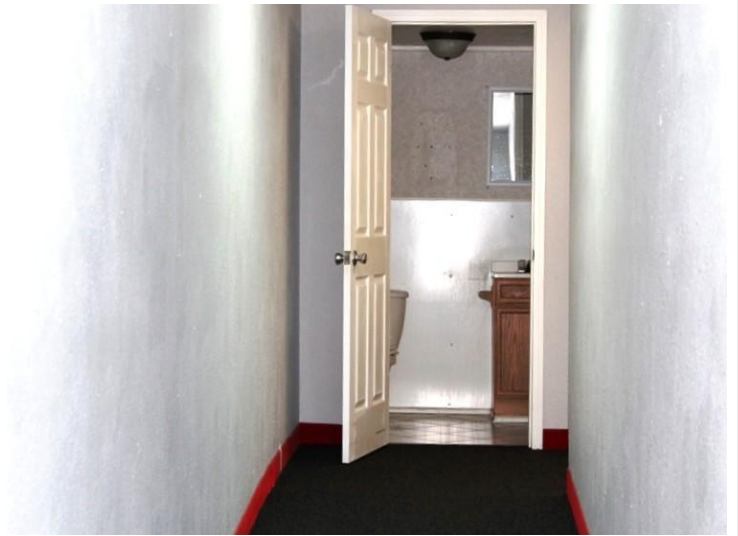
Call Affinity Real Estate

218-237-3333

info@affinityrealestate.com



Affinity Real Estate - 600 Park Avenue South - Park Rapids MN 56470



website: www.AffinityRealEstate.com | email: info@affinityrealestate.com | office: 218-237-3333 | fax: 218-237-3377



\$162,500
 MLS 6594328 Commercial
 106 4th Street
 Staples MN 56479



website: www.AffinityRealEstate.com | email: info@affinityrealestate.com | office: 218-237-3333 | fax: 218-237-3377



\$162,500
 MLS 6594328 Commercial
 106 4th Street
 Staples MN 56479



website: www.AffinityRealEstate.com | email: info@affinityrealestate.com | office: 218-237-3333 | fax: 218-237-3377



\$162,500
MLS 6594328 Commercial
106 4th Street
Staples MN 56479