



MLS 6599622 Residential

**\$399,900**

635 sq ft  
1 bedrooms  
0 baths

16051 Crown Point Road  
Nevis MN 56467

Status: Closed

**Description:**

Stunning hobby farm/hunting acreage just south of Nevis. A rare chance to own a large parcel in this area. This property has approximately 82 acres of rolling fields, woods and wetland, a nature lovers paradise. A custom hunting cabin built with wood milled on site from the property. Real northwoods character and year-round recreational use with the cabin. The property also includes several outdoor farm buildings and a well. The possibilities here are endless, come and see what your dream might be.

**Additional Details:**

Year Built	2005
Lot Acres	82.36
Lot Dimensions	Irregular
School District	308
Taxes	\$1,576
Taxes with Assessments	\$1,786
Tax Year	2024

**Additional Features:**

**Basement:** Posts **Fuel:** Wood **Heat:** Wood Stove **Sewer:** None **Water:** Submersible - 4 Inch **Air Conditioning:** None

**Driving Directions:**

From Nevis go South on Cty 13, turn right/north on Crown Point Road, property is immediately on the left/west.



Listed By:  
Affinity Real Estate Inc.

Affinity Real Estate Inc. participates in the Regional Multiple Listing Service of Minnesota, Inc Broker Reciprocity (sm) program, allowing us to display other broker's listings on our website. All properties are subject to prior sale, change or withdrawal.



Call Affinity Real Estate

**218-237-3333**

[info@affinityrealestate.com](mailto:info@affinityrealestate.com)



Affinity Real Estate - 600 Park Avenue South - Park Rapids MN 56470



website: [www.AffinityRealEstate.com](http://www.AffinityRealEstate.com) | email: [info@affinityrealestate.com](mailto:info@affinityrealestate.com) | office: 218-237-3333 | fax:218-237-3377

**Affinity**  
REAL ESTATE INC

**\$399,900**  
MLS 6599622 Residential  
16051 Crown Point Road  
Nevis MN 56467



website: [www.AffinityRealEstate.com](http://www.AffinityRealEstate.com) | email: [info@affinityrealestate.com](mailto:info@affinityrealestate.com) | office: 218-237-3333 | fax:218-237-3377

**Affinity**  
REAL ESTATE INC

**\$399,900**  
MLS 6599622 Residential  
16051 Crown Point Road  
Nevis MN 56467



website: [www.AffinityRealEstate.com](http://www.AffinityRealEstate.com) | email: [info@affinityrealestate.com](mailto:info@affinityrealestate.com) | office: 218-237-3333 | fax:218-237-3377



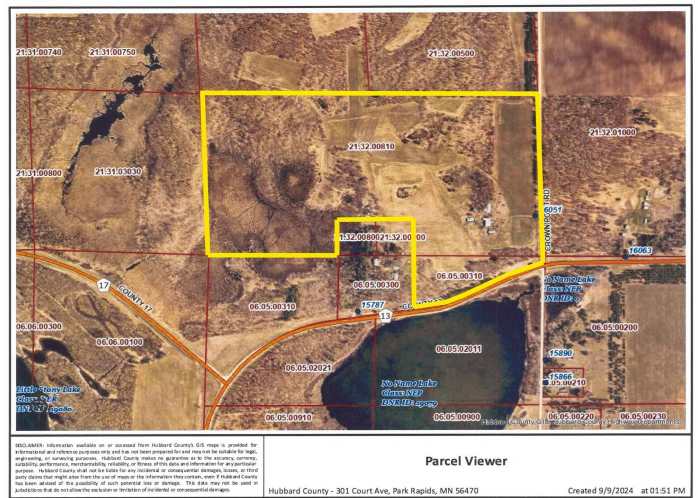
**\$399,900**  
MLS 6599622 Residential  
16051 Crown Point Road  
Nevis MN 56467



website: [www.AffinityRealEstate.com](http://www.AffinityRealEstate.com) | email: [info@affinityrealestate.com](mailto:info@affinityrealestate.com) | office: 218-237-3333 | fax:218-237-3377



**\$399,900**  
MLS 6599622 Residential  
16051 Crown Point Road  
Nevis MN 56467



website: [www.AffinityRealEstate.com](http://www.AffinityRealEstate.com) | email: [info@affinityrealestate.com](mailto:info@affinityrealestate.com) | office: 218-237-3333 | fax: 218-237-3377



**\$399,900**  
 MLS 6599622 Residential  
 16051 Crown Point Road  
 Nevis MN 56467