



MLS 6609521 Land

**\$130,000**

40 Acres  
Raw Land

TBD 193rd Avenue  
Verndale MN 56481

Status: Closed

**Description:**

Must see 40 acres of level ground just east of Verndale. Property has about 15 acres that is tillable and conveniently located a block north of Highway 10.

**Additional Details:**

Lot Acres	40
Lot Dimensions	1300x1300x1300x1300
School District	818
Taxes	\$482
Taxes with Assessments	\$482
Tax Year	2024

**Additional Features:**

**Driving Directions:**

2 miles east of Verndale on Hwy 10 N turn left onto 193rd Ave. Property will be on the right.



Listed By:  
eXp Realty

Affinity Real Estate Inc. participates in the Regional Multiple Listing Service of Minnesota, Inc Broker Reciprocity (sm) program, allowing us to display other broker's listings on our website. All properties are subject to prior sale, change or withdrawal.



**Call Affinity Real Estate**

**218-237-3333**

**info@affinityrealestate.com**



**Affinity Real Estate - 600 Park Avenue South - Park Rapids MN 56470**



website: [www.AffinityRealEstate.com](http://www.AffinityRealEstate.com) | email: [info@affinityrealestate.com](mailto:info@affinityrealestate.com) | office: 218-237-3333 | fax: 218-237-3377



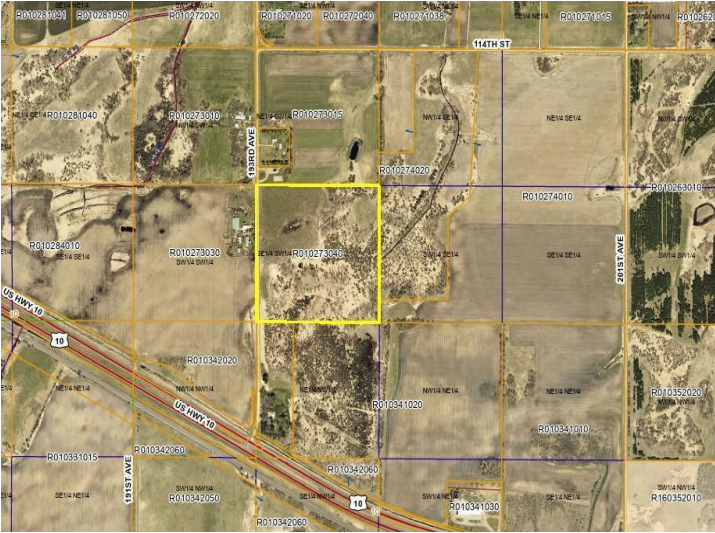
**\$130,000**  
MLS 6609521 Land  
TBD 193rd Avenue  
Verndale MN 56481



website: [www.AffinityRealEstate.com](http://www.AffinityRealEstate.com) | email: [info@affinityrealestate.com](mailto:info@affinityrealestate.com) | office: 218-237-3333 | fax: 218-237-3377



**\$130,000**  
MLS 6609521 Land  
TBD 193rd Avenue  
Verndale MN 56481



website: [www.AffinityRealEstate.com](http://www.AffinityRealEstate.com) | email: [info@affinityrealestate.com](mailto:info@affinityrealestate.com) | office: 218-237-3333 | fax: 218-237-3377



**\$130,000**  
 MLS 6609521 Land  
 TBD 193rd Avenue  
 Verndale MN 56481