



MLS 6611359 Land

\$100,000

19.9 Acres

Raw Land

XXXX 72nd Street

Pequot Lakes MN 56472

Status: Closed

Description:

Nearly 20 acres of rolling, heavily wooded, nearly all high land just west of Gull Lake awaits! This parcel has been in the family for generations and features a nice mix of hardwoods including oak, maple, ash, popple and birch. There's also a small meadow that was once hayed. An electrical line does run through this property and can be used to service this property.

Additional Details:

| | |
|------------------------|--------------|
| Lot Acres | 19.9 |
| Lot Dimensions | 660x1316 |
| School District | 2174 |
| Taxes | (unreported) |
| Taxes with Assessments | (unreported) |
| Tax Year | 2024 |

Additional Features:

Driving Directions:

From the corner of Hwy 371 and County Rd. 29 in Pequot Lakes, head West on 29 to right on Hwy 1. to left on 72nd St. to arrow sign and cartway easement on left.



Listed By:
Positive Realty

Affinity Real Estate Inc. participates in the Regional Multiple Listing Service of Minnesota, Inc Broker Reciprocity (sm) program, allowing us to display other broker's listings on our website. All properties are subject to prior sale, change or withdrawal.



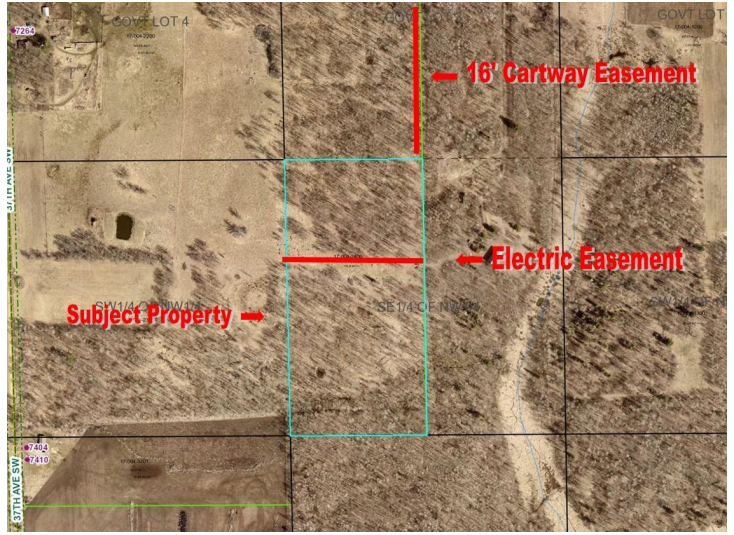
Call Affinity Real Estate

218-237-3333

info@affinityrealestate.com



Affinity Real Estate - 600 Park Avenue South - Park Rapids MN 56470



website: www.AffinityRealEstate.com | email: info@affinityrealestate.com | office: 218-237-3333 | fax: 218-237-3377



\$100,000
 MLS 6611359 Land
 XXXX 72nd Street
 Pequot Lakes MN 56472



website: www.AffinityRealEstate.com | email: info@affinityrealestate.com | office: 218-237-3333 | fax: 218-237-3377



\$100,000
MLS 6611359 Land
XXXX 72nd Street
Pequot Lakes MN 56472



website: www.AffinityRealEstate.com | email: info@affinityrealestate.com | office: 218-237-3333 | fax:218-237-3377



\$100,000
MLS 6611359 Land
XXXX 72nd Street
Pequot Lakes MN 56472