



MLS 6614613 Land

\$125,000

1.4 Acres
Raw Land

TBD Nodaway Drive
Detroit Lakes MN 56501

Status: Active

Description:

This large surveyed county lot sits on the edge of the city limits of Detroit Lakes. This buildable lot covers 1.40 acres on two parcels and is 178' wide and 346' deep. This property is suitable for a single family residence or a twin-home. No Covenants.

Additional Details:

Lot Acres	1.4
Lot Dimensions	178x346
School District	22
Taxes	(unreported)
Taxes with Assessments	\$80
Tax Year	2024

Additional Features:

Driving Directions:

From DL take West Lake Drive to Long Bridge Road, turn left and follow to Nodaway Dr, turn right and follow to property on the East side.



Listed By:
Counselor Realty Detroit Lakes

Affinity Real Estate Inc. participates in the Regional Multiple Listing Service of Minnesota, Inc Broker Reciprocity (sm) program, allowing us to display other broker's listings on our website. All properties are subject to prior sale, change or withdrawal.



Call Affinity Real Estate

218-237-3333

info@affinityrealestate.com



Affinity Real Estate - 600 Park Avenue South - Park Rapids MN 56470



website: www.AffinityRealEstate.com | email: info@affinityrealestate.com | office: 218-237-3333 | fax:218-237-3377



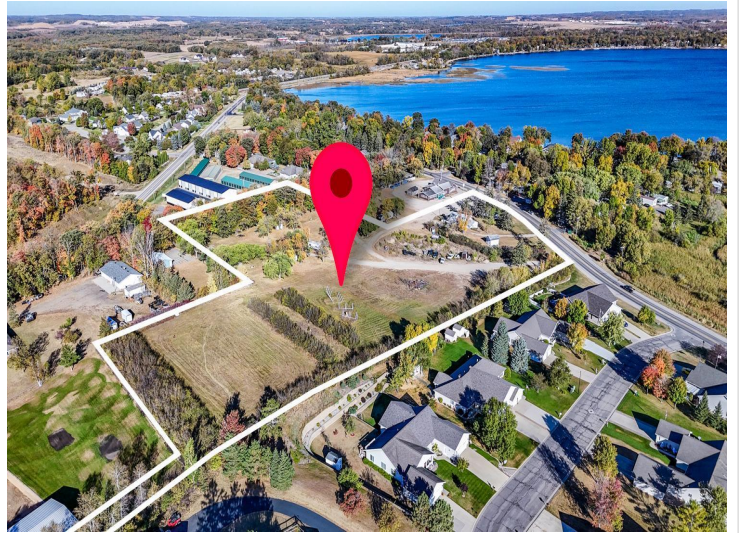
\$125,000
MLS 6614613 Land
TBD Nodaway Drive
Detroit Lakes MN 56501



website: www.AffinityRealEstate.com | email: info@affinityrealestate.com | office: 218-237-3333 | fax:218-237-3377

Affinity
REAL ESTATE INC

\$125,000
MLS 6614613 Land
TBD Nodaway Drive
Detroit Lakes MN 56501



website: www.AffinityRealEstate.com | email: info@affinityrealestate.com | office: 218-237-3333 | fax:218-237-3377



\$125,000
MLS 6614613 Land
TBD Nodaway Drive
Detroit Lakes MN 56501