



MLS 6656099 Land

\$45,000

4.2 Acres
Raw Land

TBD Onigum Road
Walker MN 56484

Status: Closed

Description:

Tract 1 is 4.2 acres, nicely wooded. Sets in the midst of the Chippewa National Forest (see map in pictures) No minimum size cabin or home and pole sheds are welcome. 15 min to Walker, 10 min to excellent Leech Lake boat landing with plenty of parking, 5 min to Charlies Up North and 5 min to Northern Lights Casino. Fish, hunt, 4-wheel, snowmobile, explore the Chippewa National Forest. Seller is related to Broker. \$45,000

Additional Details:

Lot Acres	4.2
Lot Dimensions	267x618x282x620
School District	113
Taxes	(unreported)
Taxes with Assessments	(unreported)
Tax Year	2025

Additional Features:

Driving Directions:

From the Intersection of Hwy 371 & 200 (Casino) go East on 200 for 1.8 miles, turn left on County RD 13 (Onigum RD) go approx. 1/2 mile, property on left, for sale sign on property.



Listed By:
askRICK.com dba Walker Area Realty

Affinity Real Estate Inc. participates in the Regional Multiple Listing Service of Minnesota, Inc Broker Reciprocity (sm) program, allowing us to display other broker's listings on our website. All properties are subject to prior sale, change or withdrawal.



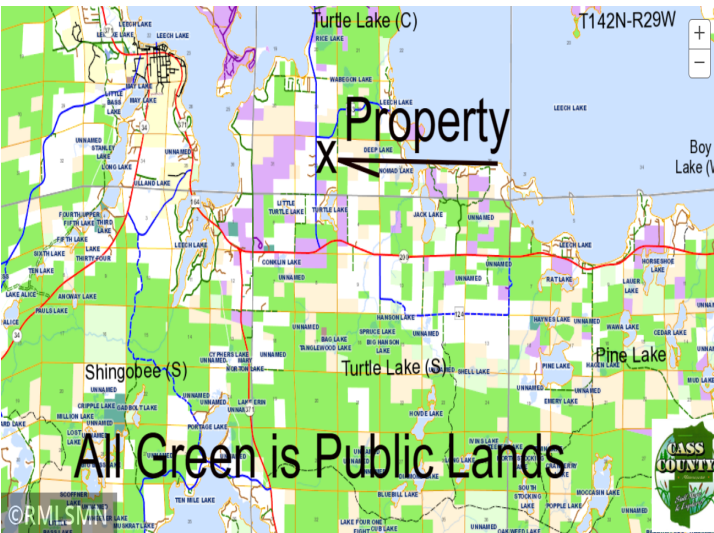
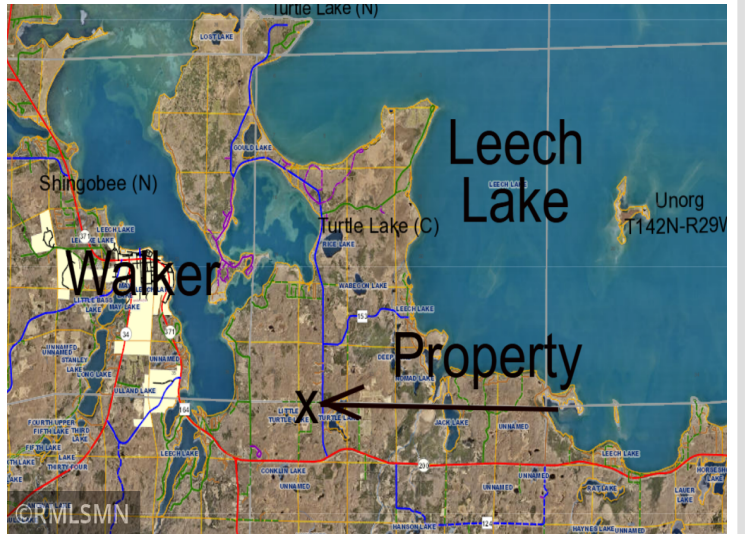
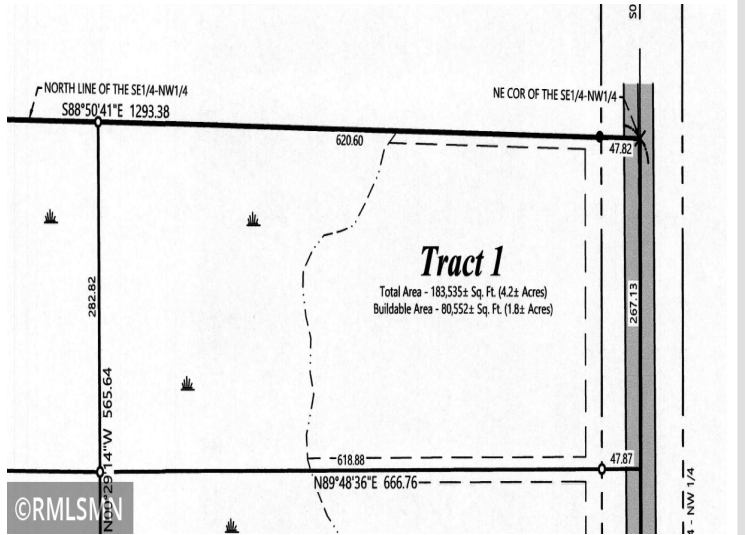
Call Affinity Real Estate

218-237-3333

info@affinityrealestate.com



Affinity Real Estate - 600 Park Avenue South - Park Rapids MN 56470



website: www.AffinityRealEstate.com | email: info@affinityrealestate.com | office: 218-237-3333 | fax: 218-237-3377



\$45,000
MLS 6656099 Land
TBD Onigum Road
Walker MN 56484



website: www.AffinityRealEstate.com | email: info@affinityrealestate.com | office: 218-237-3333 | fax:218-237-3377



\$45,000
MLS 6656099 Land
TBD Onigum Road
Walker MN 56484