



MLS 6656488 Residential

**\$309,000**

2,664 sq ft  
4 bedrooms  
3 baths

16211 Discovery Circle  
Park Rapids MN 56470

Status: Closed

**Description:**

Discover this charming four-bedroom, two-and-a-half-bath home nestled in the heart of Park Rapids. This delightful split-level residence boasts a spacious family room on the main floor, perfect for gatherings and relaxation. The inviting dining area opens up to a lovely patio, ideal for outdoor dining and entertaining. The fenced-in yard offers a sense of privacy and security, making it a great space for kids or pets to play. This home is truly move-in ready, waiting for you to make it your own!

**Additional Details:**

Year Built	1968
Lot Acres	0.53
Lot Dimensions	100x230
Garage Stalls	2
School District	309
Taxes	\$3,262
Taxes with Assessments	\$3,262
Tax Year	2024

**Additional Features:**

**Basement:** Finished **Fuel:** Electric, Natural Gas **Garage:** 2 **Heat:** Baseboard, Boiler, Hot Water **Sewer:** Septic System Compliant - Yes, Tank with Drainage Field **Water:** Submersible - 4 Inch **Air Conditioning:** Window Unit(s)

**Driving Directions:**

From 34/71 in Park Rapids, East on 34 to a right on Henrietta South, to a left on Discovery Circle. Stay left to 16211.



Listed By:  
Wolff & Simon Real Estate

Affinity Real Estate Inc. participates in the Regional Multiple Listing Service of Minnesota, Inc Broker Reciprocity (sm) program, allowing us to display other broker's listings on our website. All properties are subject to prior sale, change or withdrawal.



**Call Affinity Real Estate**

**218-237-3333**

**info@affinityrealestate.com**



**Affinity Real Estate - 600 Park Avenue South - Park Rapids MN 56470**





website: [www.AffinityRealEstate.com](http://www.AffinityRealEstate.com) | email: [info@affinityrealestate.com](mailto:info@affinityrealestate.com) | office: 218-237-3333 | fax: 218-237-3377



**\$309,000**  
 MLS 6656488 Residential  
 16211 Discovery Circle  
 Park Rapids MN 56470





website: [www.AffinityRealEstate.com](http://www.AffinityRealEstate.com) | email: [info@affinityrealestate.com](mailto:info@affinityrealestate.com) | office: 218-237-3333 | fax: 218-237-3377

**Affinity**  
REAL ESTATE INC

**\$309,000**  
MLS 6656488 Residential  
16211 Discovery Circle  
Park Rapids MN 56470



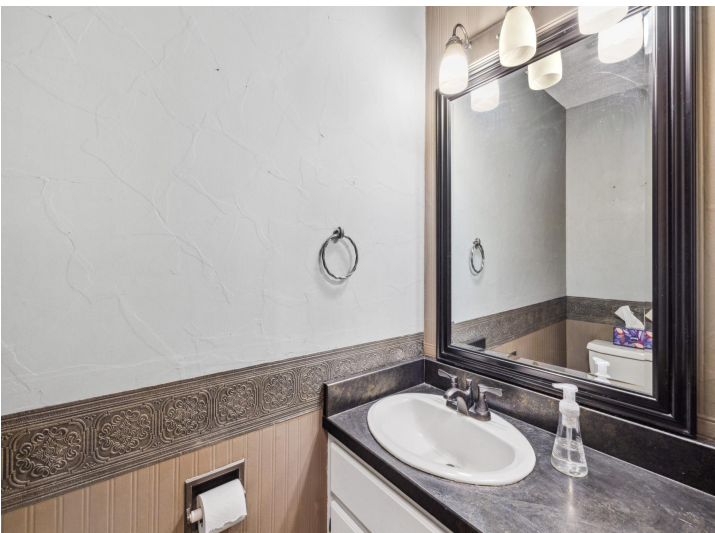


website: [www.AffinityRealEstate.com](http://www.AffinityRealEstate.com) | email: [info@affinityrealestate.com](mailto:info@affinityrealestate.com) | office: 218-237-3333 | fax: 218-237-3377



**\$309,000**  
 MLS 6656488 Residential  
 16211 Discovery Circle  
 Park Rapids MN 56470



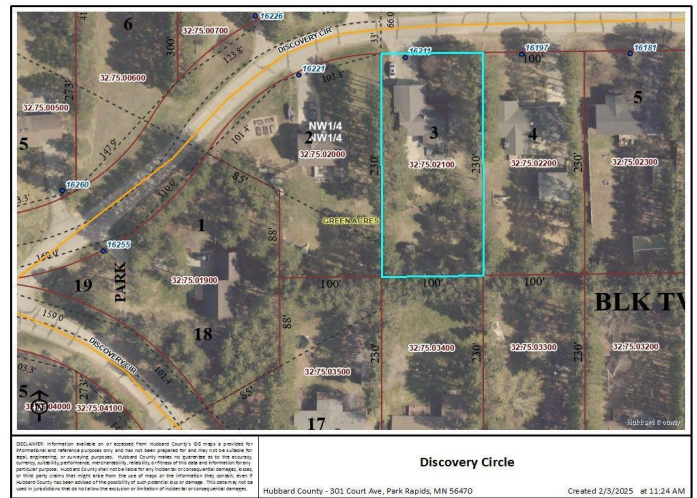


website: [www.AffinityRealEstate.com](http://www.AffinityRealEstate.com) | email: [info@affinityrealestate.com](mailto:info@affinityrealestate.com) | office: 218-237-3333 | fax: 218-237-3377



**\$309,000**  
MLS 6656488 Residential  
16211 Discovery Circle  
Park Rapids MN 56470





website: [www.AffinityRealEstate.com](http://www.AffinityRealEstate.com) | email: [info@affinityrealestate.com](mailto:info@affinityrealestate.com) | office: 218-237-3333 | fax: 218-237-3377

**Affinity**  
REAL ESTATE INC

**\$309,000**  
MLS 6656488 Residential  
16211 Discovery Circle  
Park Rapids MN 56470