



MLS 6670512 Land

\$109,900

4.42 Acres
Subdivided

TBD Town Hall Road
Bemidji MN 56601

Status: Active

Description:

Over 4 acres with HWY 71 frontage and visibility!! Located only 5 +/- miles north of Bemidji. This property has lots of potential and possibilities.

Additional Details:

Lot Acres	4.42
Lot Dimensions	615x182x620x400
School District	31
Taxes	\$600
Taxes with Assessments	\$600
Tax Year	2025

Additional Features:

Driving Directions:

North on HWY 71. Corner of 71 & Town Hall Rd Nw.



Listed By:
Grimes Realty

Affinity Real Estate Inc. participates in the Regional Multiple Listing Service of Minnesota, Inc Broker Reciprocity (sm) program, allowing us to display other broker's listings on our website. All properties are subject to prior sale, change or withdrawal.



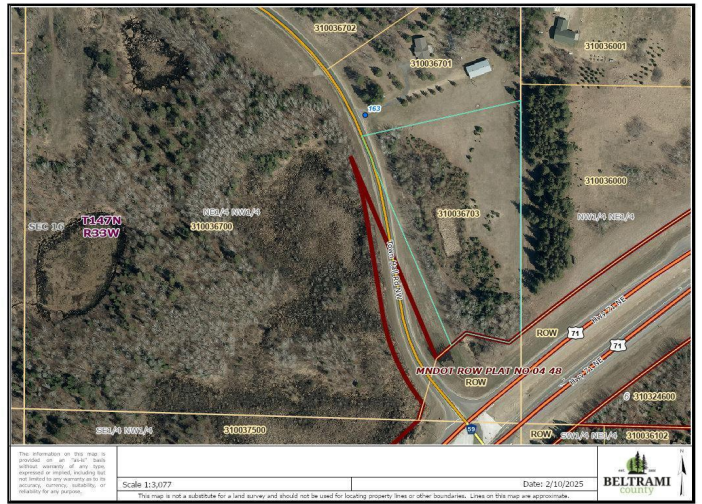
Call Affinity Real Estate

218-237-3333

info@affinityrealestate.com



Affinity Real Estate - 600 Park Avenue South - Park Rapids MN 56470



website: www.AffinityRealEstate.com | email: info@affinityrealestate.com | office: 218-237-3333 | fax:218-237-3377



\$109,900
 MLS 6670512 Land
 TBD Town Hall Road
 Bemidji MN 56601