



MLS 6670636 Land

\$525,000

154.14 Acres
Raw Land

XXXX TBD
Wadena MN 56482

Status: Active

Description:

Beautiful 154 acres just on the edge of historic Wadena. The options are endless! This would make a great building site, recreational land, or investment for the future as the city of Wadena expands.

Additional Details:

Lot Acres	154.14
Lot Dimensions	1691x1094x2116x2621x2384
School District	2155
Taxes	\$3,018
Taxes with Assessments	\$3,018
Tax Year	2024

Additional Features:

Driving Directions:

Hwy 10 E in Wadena,



Listed By:
Premier Real Estate Services

Affinity Real Estate Inc. participates in the Regional Multiple Listing Service of Minnesota, Inc Broker Reciprocity (sm) program, allowing us to display other broker's listings on our website. All properties are subject to prior sale, change or withdrawal.



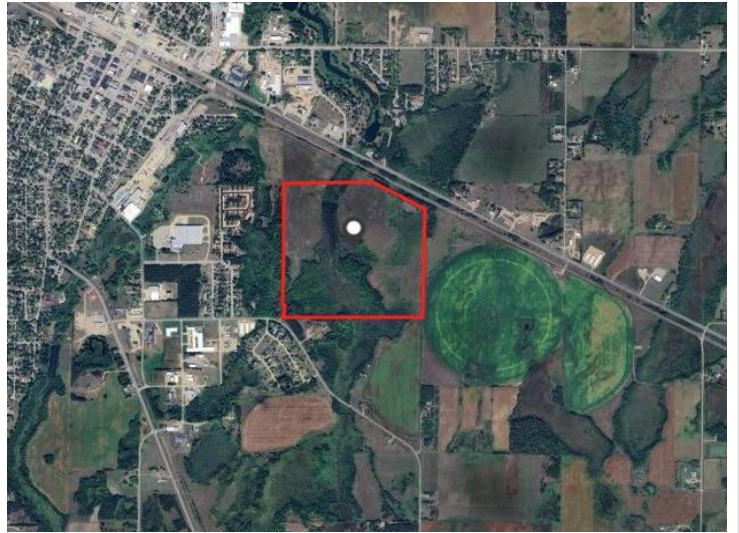
Call Affinity Real Estate

218-237-3333

info@affinityrealestate.com



Affinity Real Estate - 600 Park Avenue South - Park Rapids MN 56470



website: www.AffinityRealEstate.com | email: info@affinityrealestate.com | office: 218-237-3333 | fax:218-237-3377



\$525,000
MLS 6670636 Land
XXXX TBD
Wadena MN 56482