



MLS 6671485 Residential

\$377,000

2,546 sq ft
3 bedrooms
2 baths

763 Whisperwood Court
Bemidji MN 56601

Status: Active

Description:

This solidly built 3-bed, 2-bath home is situated on a 2.4 acre wooded plot in a quiet neighborhood. With in-floor heat, central air, and a screened-in porch, you're sure to find the convenience needed during all seasons. Other features include raised garden beds, wheel-chair accessible doors and hallways, and a 2-stall heated and insulated garage. Reach out today for a showing!

Additional Details:

Year Built	2014
Lot Acres	2.43
Lot Dimensions	556x188
Garage Stalls	2
School District	31
Taxes	\$2,715
Taxes with Assessments	\$2,896
Tax Year	2024

Additional Features:

Basement: None **Fuel:** Electric, Propane **Garage:** 2 **Heat:** Forced Air, Radiant Floor **Sewer:** Tank with Drainage Field **Water:** Drilled **Air Conditioning:** Central Air

Driving Directions:

West on Division St W, turn left to stay on Division St W, Left onto Whisperwood Ct, Property will be on the right



Listed By:
EXIT MN Lakes Realty

Affinity Real Estate Inc. participates in the Regional Multiple Listing Service of Minnesota, Inc Broker Reciprocity (sm) program, allowing us to display other broker's listings on our website. All properties are subject to prior sale, change or withdrawal.



Call Affinity Real Estate

218-237-3333

info@affinityrealestate.com



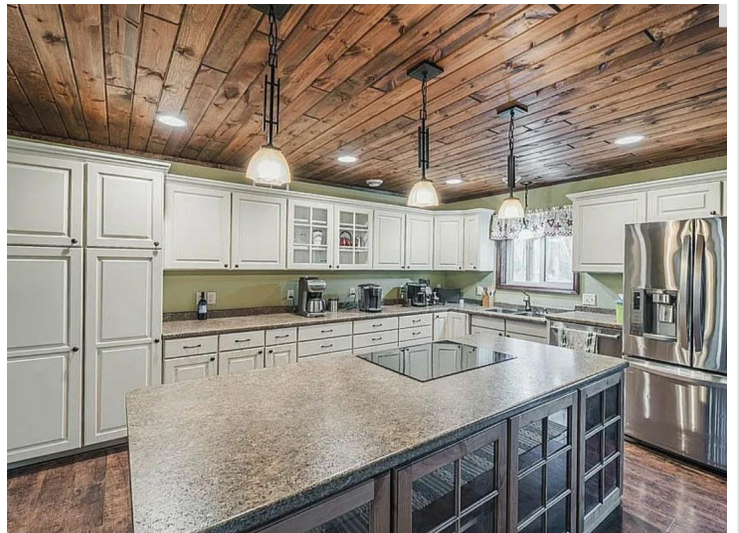
Affinity Real Estate - 600 Park Avenue South - Park Rapids MN 56470



website: www.AffinityRealEstate.com | email: info@affinityrealestate.com | office: 218-237-3333 | fax:218-237-3377

Affinity
REAL ESTATE INC

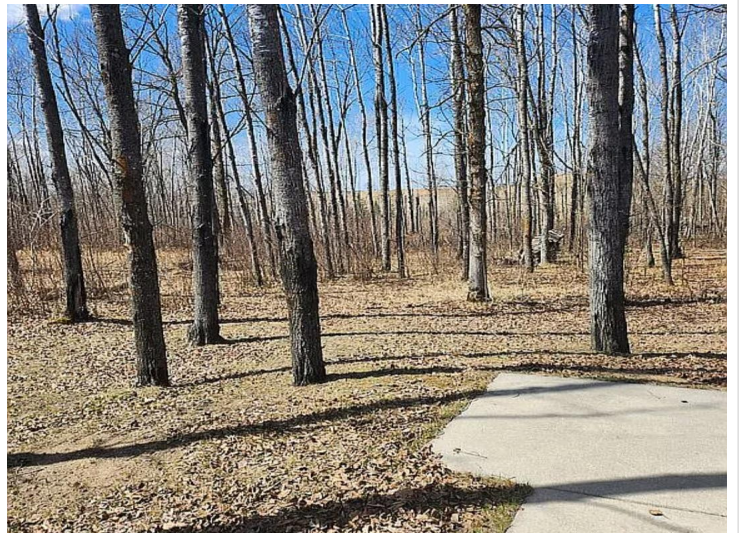
\$377,000
MLS 6671485 Residential
763 Whisperwood Court
Bemidji MN 56601



website: www.AffinityRealEstate.com | email: info@affinityrealestate.com | office: 218-237-3333 | fax:218-237-3377

Affinity
REAL ESTATE INC

\$377,000
MLS 6671485 Residential
763 Whisperwood Court
Bemidji MN 56601



website: www.AffinityRealEstate.com | email: info@affinityrealestate.com | office: 218-237-3333 | fax:218-237-3377

Affinity
REAL ESTATE INC

\$377,000
MLS 6671485 Residential
763 Whisperwood Court
Bemidji MN 56601



website: www.AffinityRealEstate.com | email: info@affinityrealestate.com | office: 218-237-3333 | fax:218-237-3377



\$377,000
MLS 6671485 Residential
763 Whisperwood Court
Bemidji MN 56601



website: www.AffinityRealEstate.com | email: info@affinityrealestate.com | office: 218-237-3333 | fax: 218-237-3377

Affinity
REAL ESTATE INC

\$377,000
MLS 6671485 Residential
763 Whisperwood Court
Bemidji MN 56601



website: www.AffinityRealEstate.com | email: info@affinityrealestate.com | office: 218-237-3333 | fax:218-237-3377



\$377,000
MLS 6671485 Residential
763 Whisperwood Court
Bemidji MN 56601