



MLS 6683172 Residential

\$225,000

2,140 sq ft
3 bedrooms
2 baths

108 26th Street
Bemidji MN 56601

Status: Closed

Description:

This 3 bedroom mid-century home, in a great location just 1 1/2 blocks from Lake Bemidji, is ready for new owners! Major updates have been completed; windows have been replaced over the years (including the gorgeous picture window), new roof in 2021, updated furnace, water heater and plumbing. Hardwood floors, attached garage, beautiful perennial gardens, completely fenced backyard, garden shed and a backyard studio with electricity that can be used seasonally as entertaining space are all included with this property. Cameron Park on Lake Bemidji is just down the block and has a swimming beach, bathhouse, boat launch, playground and picnic pavilion. You could make a visit to the lake every day ~ set up your showing today!

Additional Details:

Year Built	1954
Lot Acres	0.16
Lot Dimensions	63x110
Garage Stalls	2
School District	31
Taxes	\$2,512
Taxes with Assessments	\$2,764
Tax Year	2024

Additional Features:

Basement: Block, Finished, Full **Fuel:** Natural Gas **Garage:** 2 **Heat:** Forced Air **Sewer:** City Sewer/Connected **Water:** City Water/Connected **Air Conditioning:** Window Unit(s)

Driving Directions:

From Downtown Bemidji: North on Bemidji Ave to 26th ST NE. Right on 26th, go 1/2 block, residence on the right.



Listed By:
Lake-N-Woods Realty

Affinity Real Estate Inc. participates in the Regional Multiple Listing Service of Minnesota, Inc Broker Reciprocity (sm) program, allowing us to display other broker's listings on our website. All properties are subject to prior sale, change or withdrawal.



Call Affinity Real Estate

218-237-3333

info@affinityrealestate.com



Affinity Real Estate - 600 Park Avenue South - Park Rapids MN 56470



website: www.AffinityRealEstate.com | email: info@affinityrealestate.com | office: 218-237-3333 | fax: 218-237-3377

Affinity
REAL ESTATE INC

\$225,000
MLS 6683172 Residential
108 26th Street
Bemidji MN 56601



website: www.AffinityRealEstate.com | email: info@affinityrealestate.com | office: 218-237-3333 | fax: 218-237-3377



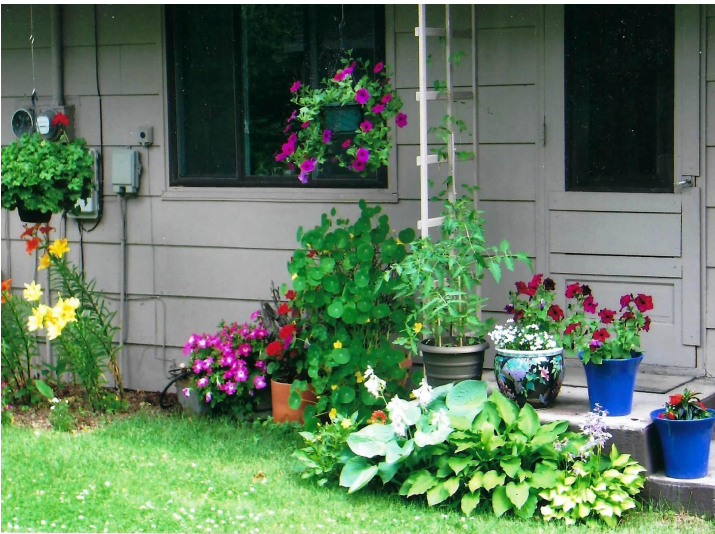
\$225,000
MLS 6683172 Residential
108 26th Street
Bemidji MN 56601



website: www.AffinityRealEstate.com | email: info@affinityrealestate.com | office: 218-237-3333 | fax: 218-237-3377

Affinity
REAL ESTATE INC

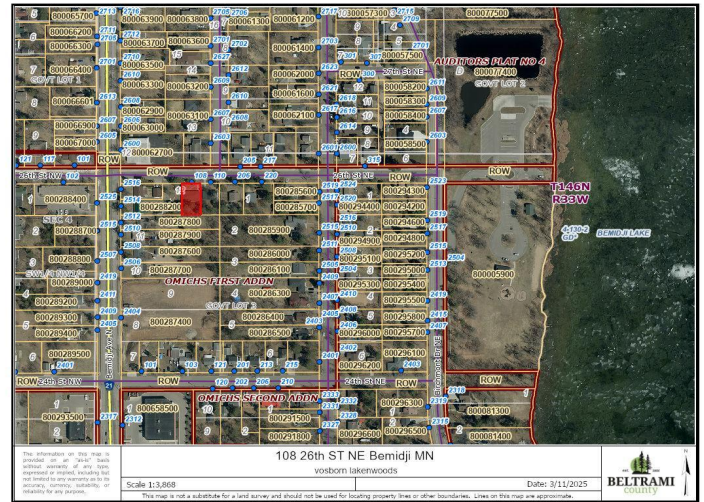
\$225,000
MLS 6683172 Residential
108 26th Street
Bemidji MN 56601



website: www.AffinityRealEstate.com | email: info@affinityrealestate.com | office: 218-237-3333 | fax: 218-237-3377

Affinity
REAL ESTATE INC

\$225,000
MLS 6683172 Residential
108 26th Street
Bemidji MN 56601



website: www.AffinityRealEstate.com | email: info@affinityrealestate.com | office: 218-237-3333 | fax: 218-237-3377



\$225,000
 MLS 6683172 Residential
 108 26th Street
 Bemidji MN 56601