



MLS 6694634 Residential

\$450,000

2,400 sq ft
4 bedrooms
3 baths

1320 Whiting Road
Bemidji MN 56601

Status: Active

Description:

Beautiful 2400 sq ft, newer one-level home in the sought after Prairiewood neighborhood. This home shows like new and features 4BR/3BA, 3 stall finished and heated garage, lawn sprinkler system, beautiful window treatments, stainless appliances, newer light fixtures and more. The Prairiewood neighborhood features great walking and skiing trails, over 50 acres of commonly owned acreage, an area to store boats, etc. Come and see this beautiful property!

Additional Details:

Year Built	2017
Lot Acres	0.43
Lot Dimensions	110x170
Garage Stalls	3
School District	31
Taxes	\$4,420
Taxes with Assessments	\$440
Tax Year	2024

Additional Features:

Basement: None **Fuel:** Natural Gas **Garage:** 3 **Heat:** Forced Air **Sewer:** Private Sewer **Water:** Private **Air Conditioning:** Central Air

Driving Directions:

North on Irvine Ave, left on Whiting Rd, left on Aspen Ave, left into Prairiewood Dev. #93 is on the left.



Listed By:
Century 21 Dickinson

Affinity Real Estate Inc. participates in the Regional Multiple Listing Service of Minnesota, Inc Broker Reciprocity (sm) program, allowing us to display other broker's listings on our website. All properties are subject to prior sale, change or withdrawal.



Call Affinity Real Estate

218-237-3333

info@affinityrealestate.com



Affinity Real Estate - 600 Park Avenue South - Park Rapids MN 56470



website: www.AffinityRealEstate.com | email: info@affinityrealestate.com | office: 218-237-3333 | fax:218-237-3377



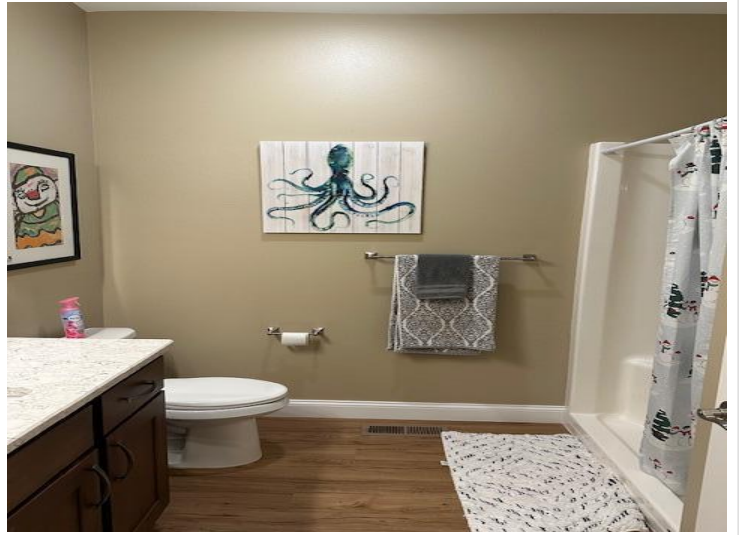
\$450,000
MLS 6694634 Residential
1320 Whiting Road
Bemidji MN 56601



website: www.AffinityRealEstate.com | email: info@affinityrealestate.com | office: 218-237-3333 | fax:218-237-3377



\$450,000
MLS 6694634 Residential
1320 Whiting Road
Bemidji MN 56601



website: www.AffinityRealEstate.com | email: info@affinityrealestate.com | office: 218-237-3333 | fax:218-237-3377



\$450,000
MLS 6694634 Residential
1320 Whiting Road
Bemidji MN 56601



website: www.AffinityRealEstate.com | email: info@affinityrealestate.com | office: 218-237-3333 | fax:218-237-3377



\$450,000
MLS 6694634 Residential
1320 Whiting Road
Bemidji MN 56601