



MLS 6697203 Lake Home

**\$2,399,000**

3,902 sq ft  
5 bedrooms  
3 baths

7436 Christy Drive  
Nisswa MN 56468

Waterfront: Upper Gull

Status: Canceled

**Description:**

**\*\*Turnkey Luxury on Gull Lake!\*\***

Your perfect lakefront escape is ready and waiting. This newly constructed home on Gull Lake has been thoughtfully designed and fully finished; every detail has been meticulously planned for you! All you need to do is move in and start enjoying the sandy lakeshore on the Gull Chain.


Soak in breathtaking lake views from the floor-to-ceiling windows and the grand staircase overlooking the water. Enjoy the open floor plan featuring 9-foot ceilings, a gas stone fireplace, and box vaults. The kitchen boasts a large center island ideal for entertaining, along with a walk-in pantry and granite countertops.

You'll love the lower level, which includes a sunlit family room, two additional bedrooms, and a versatile flex/5th bedroom. There's plenty of space for your lake toys in the spacious 30' x 50' heated garage, complete with floor drains and a sink.

Whether you're entertaining friends or spending quiet weekends with family, this home is designed for effortless living and unforgettable memories! Don't miss your chance to own a slice of Gull Lake paradise, just in time for summer! Still plenty of room to put up another detached garage on this large lot. The driveway will be asphalted, the yard will be sodded, and irrigation will be installed before closing.

**Additional Details:**

Year Built	2024
Lot Acres	0.93
Lot Dimensions	178x328x100x353
Garage Stalls	4
School District	186
Taxes	\$3,432
Taxes with Assessments	\$3,432
Tax Year	2025



Listed By:  
Velouk, Fred, Nisswa, MN  
Affinity Real Estate Inc. participates in the Regional Multiple Listing Service of Minnesota, Inc Broker Reciprocity (sm) program, allowing us to display other broker's listings on our website. All properties are subject to prior sale, change or withdrawal.



**Call Affinity Real Estate**

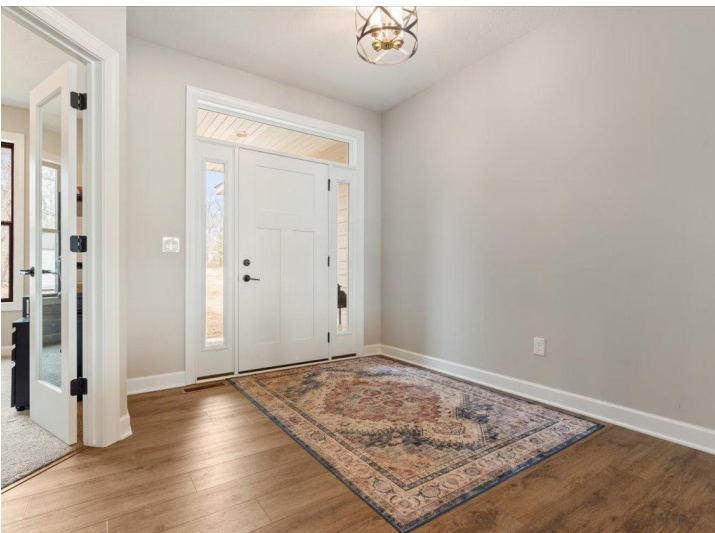
**218-237-3333**

**info@affinityrealestate.com**



**Affinity Real Estate - 600 Park Avenue South - Park Rapids MN 56470**





website: [www.AffinityRealEstate.com](http://www.AffinityRealEstate.com) | email: [info@affinityrealestate.com](mailto:info@affinityrealestate.com) | office: 218-237-3333 | fax: 218-237-3377

**Affinity**  
REAL ESTATE INC

**\$2,399,000**

MLS 6697203 Lake Home  
7436 Christy Drive  
Nisswa MN 56468





website: [www.AffinityRealEstate.com](http://www.AffinityRealEstate.com) | email: [info@affinityrealestate.com](mailto:info@affinityrealestate.com) | office: 218-237-3333 | fax: 218-237-3377

**Affinity**  
REAL ESTATE INC

**\$2,399,000**

MLS 6697203 Lake Home  
7436 Christy Drive  
Nisswa MN 56468



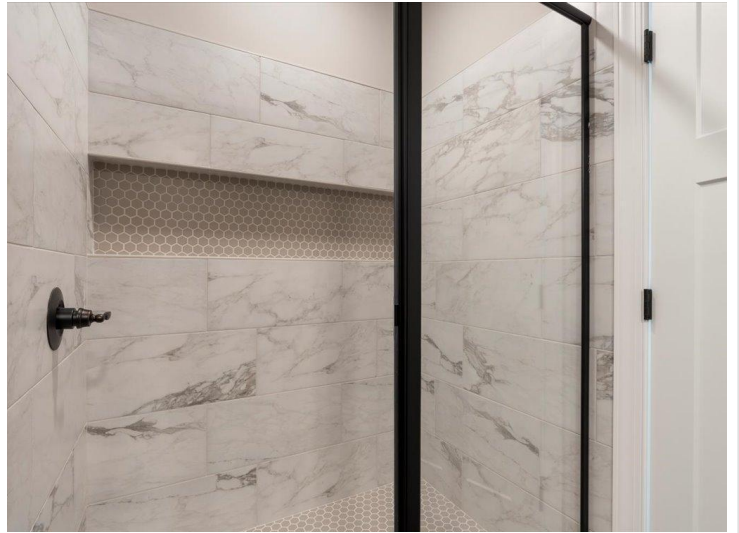


website: [www.AffinityRealEstate.com](http://www.AffinityRealEstate.com) | email: [info@affinityrealestate.com](mailto:info@affinityrealestate.com) | office: 218-237-3333 | fax: 218-237-3377

**Affinity**  
REAL ESTATE INC

**\$2,399,000**  
MLS 6697203 Lake Home  
7436 Christy Drive  
Nisswa MN 56468



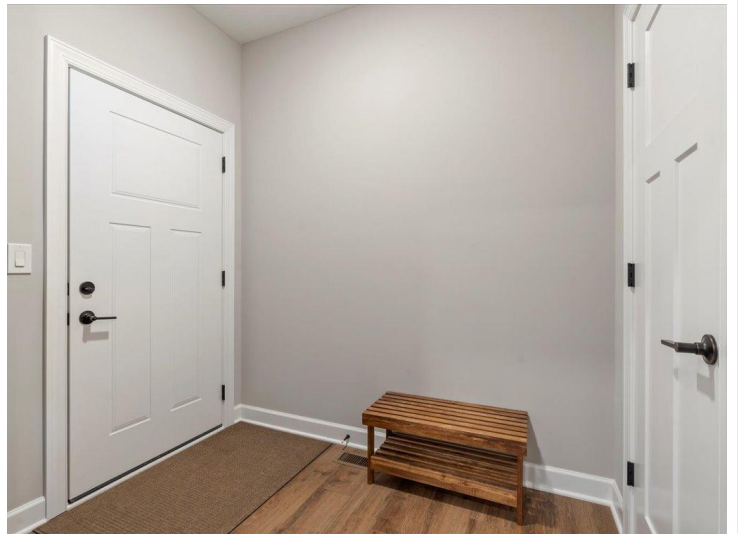


website: [www.AffinityRealEstate.com](http://www.AffinityRealEstate.com) | email: [info@affinityrealestate.com](mailto:info@affinityrealestate.com) | office: 218-237-3333 | fax: 218-237-3377



**\$2,399,000**  
 MLS 6697203 Lake Home  
 7436 Christy Drive  
 Nisswa MN 56468





website: [www.AffinityRealEstate.com](http://www.AffinityRealEstate.com) | email: [info@affinityrealestate.com](mailto:info@affinityrealestate.com) | office: 218-237-3333 | fax: 218-237-3377



**\$2,399,000**  
MLS 6697203 Lake Home  
7436 Christy Drive  
Nisswa MN 56468





website: [www.AffinityRealEstate.com](http://www.AffinityRealEstate.com) | email: [info@affinityrealestate.com](mailto:info@affinityrealestate.com) | office: 218-237-3333 | fax: 218-237-3377



**\$2,399,000**  
 MLS 6697203 Lake Home  
 7436 Christy Drive  
 Nisswa MN 56468





website: [www.AffinityRealEstate.com](http://www.AffinityRealEstate.com) | email: [info@affinityrealestate.com](mailto:info@affinityrealestate.com) | office: 218-237-3333 | fax: 218-237-3377



**\$2,399,000**

MLS 6697203 Lake Home  
7436 Christy Drive  
Nisswa MN 56468





website: [www.AffinityRealEstate.com](http://www.AffinityRealEstate.com) | email: [info@affinityrealestate.com](mailto:info@affinityrealestate.com) | office: 218-237-3333 | fax: 218-237-3377



**\$2,399,000**  
 MLS 6697203 Lake Home  
 7436 Christy Drive  
 Nisswa MN 56468





website: [www.AffinityRealEstate.com](http://www.AffinityRealEstate.com) | email: [info@affinityrealestate.com](mailto:info@affinityrealestate.com) | office: 218-237-3333 | fax: 218-237-3377



**\$2,399,000**

MLS 6697203 Lake Home  
7436 Christy Drive  
Nisswa MN 56468





website: [www.AffinityRealEstate.com](http://www.AffinityRealEstate.com) | email: [info@affinityrealestate.com](mailto:info@affinityrealestate.com) | office: 218-237-3333 | fax: 218-237-3377



**\$2,399,000**  
MLS 6697203 Lake Home  
7436 Christy Drive  
Nisswa MN 56468