



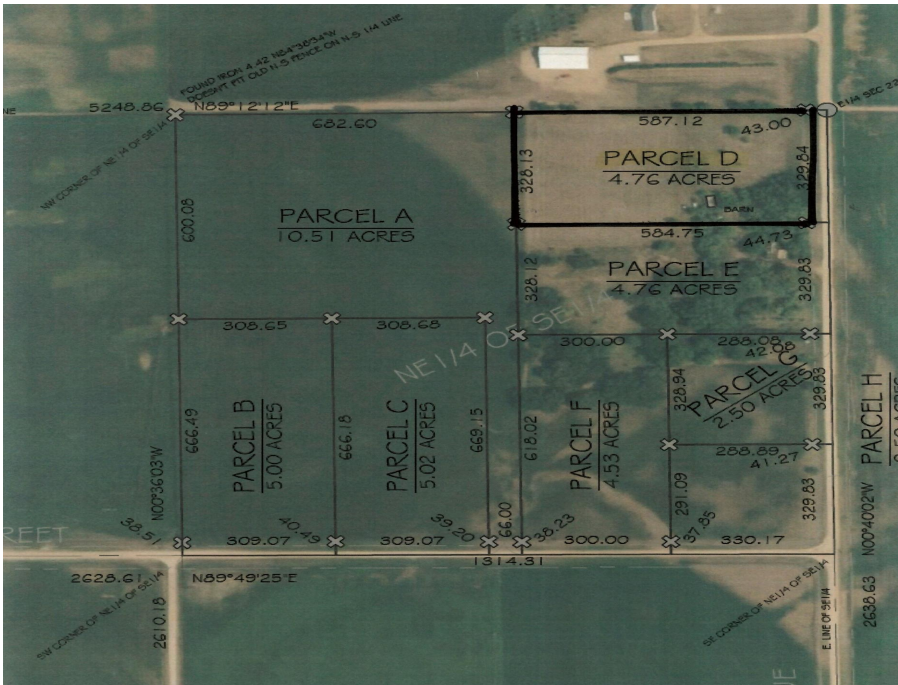
MLS 6374110 Land

**\$49,900**

4.76 Acres  
Site Plan Approved

424XX Lot D 380th Avenue  
Dent MN 56573

Status: Pending



**Description:**

An Affordable Building Site with No Covenants? That's almost unheard of these days. Well, look no further! This perfectly located lot includes 4.76 Acres of beautiful pasture land, just begging to be transformed into something great! Maybe you want to build a storage building, a barndominium, or a shouse? Here is your chance to let your imagination run wild! Scattered trees to the south provide great privacy & scenery for whatever your heart desires.

**Additional Details:**

Lot Acres	4.76
Lot Dimensions	330* x 587*
School District	549
Taxes	\$852
Taxes with Assessments	\$932
Tax Year	2023

**Additional Features:**

**Driving Directions:**

From Dent MN, Take 108 East. After about 1/2 Mile, turn left onto 380th Ave / Wolf Lake Rd. Continue for about 1.7 Miles & your destination will be on the left.



Listed By:  
Jack Chivers Realty

Affinity Real Estate Inc. participates in the Regional Multiple Listing Service of Minnesota, Inc Broker Reciprocity (sm) program, allowing us to display other broker's listings on our website. All properties are subject to prior sale, change or withdrawal.



Call Affinity Real Estate

**218-237-3333**

[info@affinityrealestate.com](mailto:info@affinityrealestate.com)



Affinity Real Estate - 600 Park Avenue South - Park Rapids MN 56470