



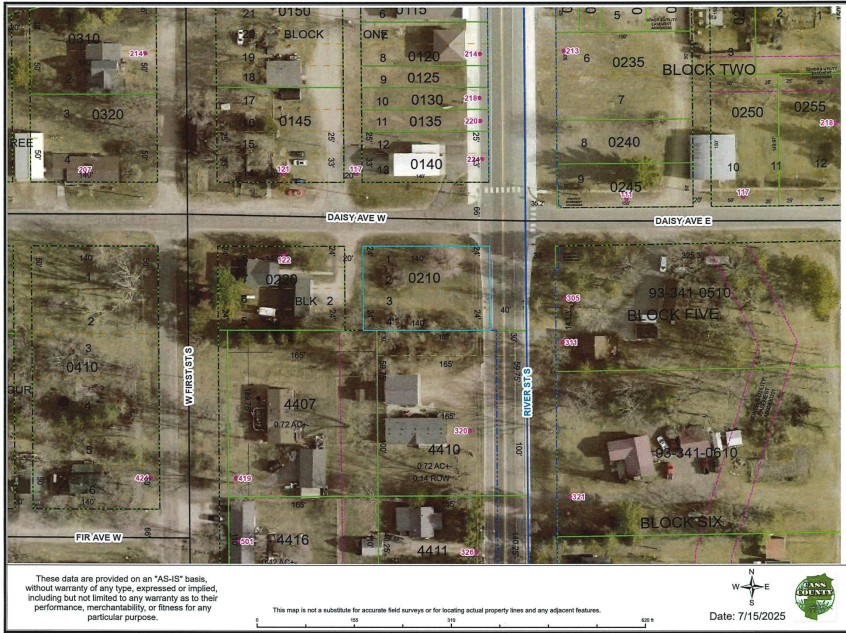
MLS 6756597 Land

**\$36,900**

0.3 Acres  
Subdivided

TBD River Street South  
Pillager MN 56473

Status: Active



#### Description:

Nice corner lot with excellent exposure and good daily traffic count. Commercial possibilities!! Lot has nice level elevation, frontage on two roads and minimal tree coverage. Property is located close to several other businesses and is one of few lots currently available in Pillager. Don't miss out on this great opportunity!!

#### Additional Details:

Lot Acres	0.3
Lot Dimensions	96x140x96x140
School District	116
Taxes	\$436
Taxes with Assessments	\$436
Tax Year	2025

#### Additional Features:

#### Driving Directions:

From Baxter take State Highway 210 West to Pillager and take a left onto Cty Rd 1 (River Street S) to property on right (a couple of blocks south after crossing the railroad tracks)



Listed By:  
Edina Realty, Inc.

Affinity Real Estate Inc. participates in the Regional Multiple Listing Service of Minnesota, Inc Broker Reciprocity (sm) program, allowing us to display other broker's listings on our website. All properties are subject to prior sale, change or withdrawal.



Call Affinity Real Estate

**218-237-3333**

[info@affinityrealestate.com](mailto:info@affinityrealestate.com)



Affinity Real Estate - 600 Park Avenue South - Park Rapids MN 56470