



MLS 4208500 Land

**\$21,500**

2.50 acres

0 Hard Pine Drive  
Park Rapids MN 56470

(Active)

**Description:**

Northwoods Paradise! Tall pines and a beautiful mix of trees adorn these very special building sites. Located near Eagle View Golf Course, Eagle, Island and Potato Lakes, Itasca State Park, Soaring Eagle Cross Country Ski Area and numerous eating establishments. Only 8 miles North of Park Rapids.

**Additional Details:**

Lot Acres	2.500
School District	309 - Park Rapids
Taxes	\$194
Taxes with Assessments	\$194
Tax Year	2019

**Additional Features:**

**Lot Description :** Tree Coverage - Medium

**Driving Directions:**

From Hwys. 71/34 in Park Rapids, North on 71 (8 miles) to Hard Pine Dr., turn left & follow to end of Cul De Sac. Sign on property.



Listed By:  
Wolff & Simon Real Estate

Affinity Real Estate Inc. participates in the Regional Multiple Listing Service of Minnesota, Inc Broker Reciprocity (sm) program, allowing us to display other broker's listings on our website. All properties are subject to prior sale, change or withdrawal.



Call Affinity Real Estate

**218-237-3333**

[info@affinityrealestate.com](mailto:info@affinityrealestate.com)



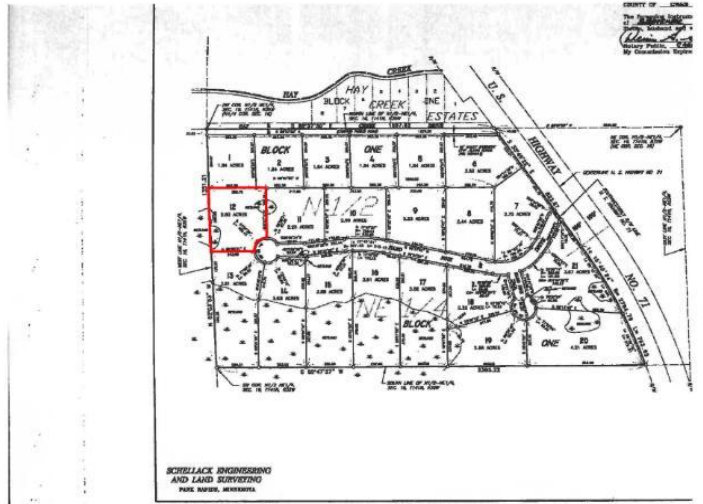
Affinity Real Estate - 600 Park Avenue South - Park Rapids MN 56470



website: [www.AffinityRealEstate.com](http://www.AffinityRealEstate.com) | email: [info@affinityrealestate.com](mailto:info@affinityrealestate.com) | office: 218-237-3333 | fax:218-237-3377



**\$21,500**  
MLS 4208500 Land  
0 Hard Pine Drive  
Park Rapids MN 56470



website: [www.AffinityRealEstate.com](http://www.AffinityRealEstate.com) | email: [info@affinityrealestate.com](mailto:info@affinityrealestate.com) | office: 218-237-3333 | fax:218-237-3377



**\$21,500**  
 MLS 4208500 Land  
 0 Hard Pine Drive  
 Park Rapids MN 56470