

MLS 4296936 Land

**\$40,480**

4.96 Acres  
Other

L1 B1 County Road 1  
Pine River MN 56474

Status: Active

#### Description:

Choose your ~5 acre parcel to build your new dream home in the country, located between Crosslake & Pine River, & near the Whitefish Chain of Lakes. Some lots have a nice mix of trees, some have paved road, some have an open lot...your choice. The building envelopes are large( approx 2.2-2.5 ac), with plenty of room for landscaping/gardening or kids' play area. There's a large border to plant shrubs, trees, or bushes, all to provide privacy & space. Covenants are minimal & designed to protect your investment. Join in with all the year round events and activities, dining shopping, golfing and more, in the Crosslake area and the Whitefish Chain of Lakes.

#### Additional Details:

Lot Acres	4.96
Lot Dimensions	317x667x329x668
School District	2174
Taxes	\$108
Taxes with Assessments	\$108
Tax Year	2023

#### Additional Features:

#### Driving Directions:

From Nisswa, N on 371 to Jenkins, Rt. on Cty Rd 15 to Cty Rd 1, Rt. on 1 for 2 3/4 miles.



Listed By:  
Positive Realty

Affinity Real Estate Inc. participates in the Regional Multiple Listing Service of Minnesota, Inc Broker Reciprocity (sm) program, allowing us to display other broker's listings on our website. All properties are subject to prior sale, change or withdrawal.



Call Affinity Real Estate

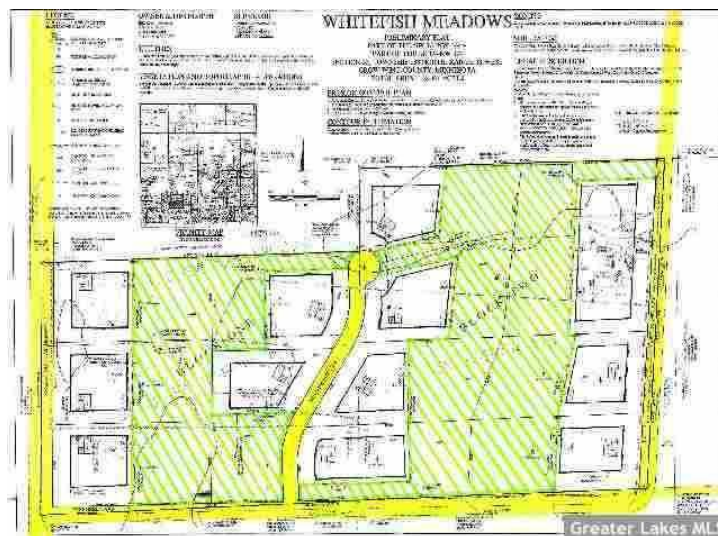
**218-237-3333**

[info@affinityrealestate.com](mailto:info@affinityrealestate.com)



Affinity Real Estate - 600 Park Avenue South - Park Rapids MN 56470





Page 2 of 2