

MLS 4296937 Land

\$42,480

4.96 Acres
Subdivided

L2 B1 County Road 1
Pine River MN 56474

Status: Active

Description:

Choose your 5 acre parcel to build your new dream home in the country, located between Crosslake & Pine River & near the Whitefish Chain of Lakes. Some lots have a nice mix of trees, some have paved road, some have an open lot...your choice. The building envelopes are large, with plenty of room for landscaping/ gardening or kids' play area. There's a large border to plant shrubs, trees, or bushes, all to provide privacy & space. Covenants are minimal & designed to protect your investment. Lots of year round activities and events in the Pine River area, AND amid the Crosslake area and the Whitefish Chain of Lakes.

Additional Details:

Lot Acres	4.96
Lot Dimensions	324x666x324x666
School District	2174
Taxes	\$108
Taxes with Assessments	\$108
Tax Year	2023

Additional Features:

Driving Directions:

From Nisswa, N on 371 to Jenkins, Rt. on Cty Rd 15 to Cty Rd 1, Rt. for approximately half + mile, on the left.



Listed By:
Positive Realty

Affinity Real Estate Inc. participates in the Regional Multiple Listing Service of Minnesota, Inc Broker Reciprocity (sm) program, allowing us to display other broker's listings on our website. All properties are subject to prior sale, change or withdrawal.



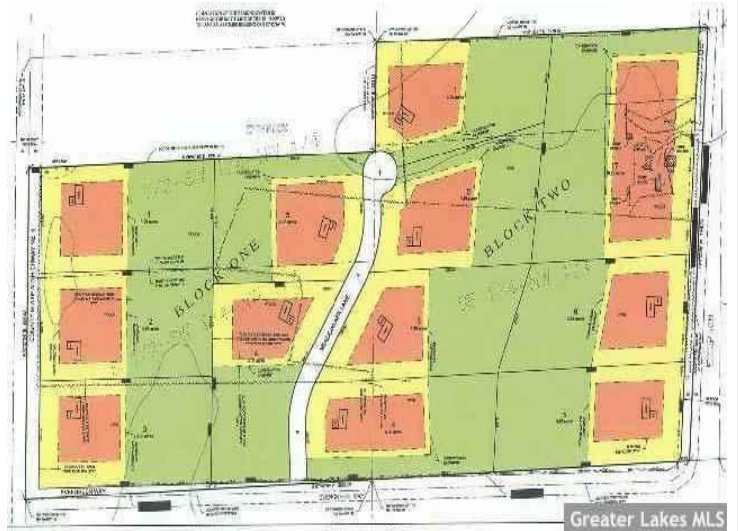
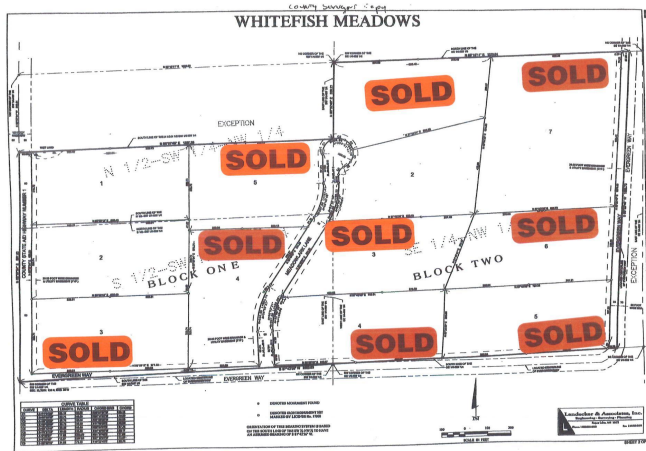
Call Affinity Real Estate

218-237-3333

info@affinityrealestate.com



Affinity Real Estate - 600 Park Avenue South - Park Rapids MN 56470



website: www.AffinityRealEstate.com | email: info@affinityrealestate.com | office: 218-237-3333 | fax: 218-237-3377



\$42,480
 MLS 4296937 Land
 L2 B1 County Road 1
 Pine River MN 56474