



MLS 5585386 Lake Land

**\$109,900**

**Description:**

Build your dream home on this 1.67 acre lot with 150' of frontage on Lake Plantagenet. Lot dimensions are 150x491. Close to the boat access and in the new Plantagenet Bay Estates.

**Additional Details:**

Lot Acres	1.67
Lot Dimensions	150x491
School District	31
Taxes	\$542
Taxes with Assessments	\$542
Tax Year	2022

**Additional Features:**

**Driving Directions:**

South on Highway 71, right on County Rd 9, right on 219th Ave, left on Tango.



Listed By:  
Coldwell Banker Crown Realtors

Affinity Real Estate Inc. participates in the Regional Multiple Listing Service of Minnesota, Inc Broker Reciprocity (sm) program, allowing us to display other broker's listings on our website. All properties are subject to prior sale, change or withdrawal.



**Call Affinity Real Estate**

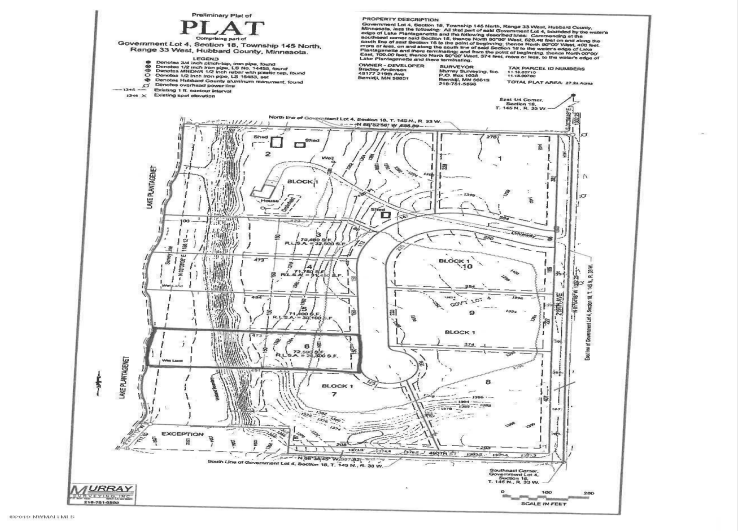
**218-237-3333**

**info@affinityrealestate.com**



**Affinity Real Estate - 600 Park Avenue South - Park Rapids MN 56470**





website: [www.AffinityRealEstate.com](http://www.AffinityRealEstate.com) | email: [info@affinityrealestate.com](mailto:info@affinityrealestate.com) | office: 218-237-3333 | fax:218-237-3377



**\$109,900**  
 MLS 5585386 Lake Land  
 Lot 6 Tango Drive  
 Bemidji MN 56601