

©2019 NWMAR MLS



MLS 5585396 Land

\$99,000

1.65 Acres
Raw Land

Lot 4 Tango Drive
Bemidji MN 56601

Status: Expired

Description:

Nice building lot on Lake Plantagenet, 150' of frontage, 1.65 acre lot with 150x473 dimensions. Close to the boat access. Part of the new Plantagenet Bay Estates.

Additional Details:

Lot Acres	1.65
Lot Dimensions	150x473x150x473
School District	31
Taxes	\$540
Taxes with Assessments	\$540
Tax Year	2022

Additional Features:

Driving Directions:

South on Highway 71, right on County Rd 9, right on 219th Ave, left on Tango.



Listed By:
Coldwell Banker Crown Realtors

Affinity Real Estate Inc. participates in the Regional Multiple Listing Service of Minnesota, Inc Broker Reciprocity (sm) program, allowing us to display other broker's listings on our website. All properties are subject to prior sale, change or withdrawal.



Call Affinity Real Estate

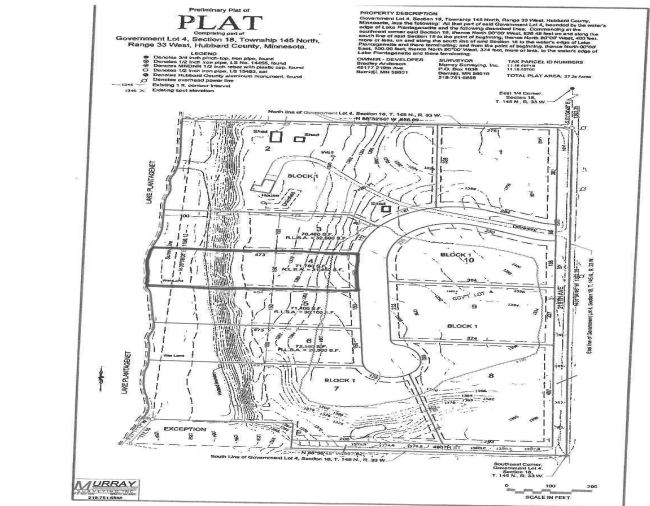
218-237-3333

info@affinityrealestate.com

MLS



Affinity Real Estate - 600 Park Avenue South - Park Rapids MN 56470



website: www.AffinityRealEstate.com | email: info@affinityrealestate.com | office: 218-237-3333 | fax: 218-237-3377



\$99,000
MLS 5585396 Land
Lot 4 Tango Drive
Bemidji MN 56601