



MLS 5588738 Land

\$199,000

0.78 Acres
Subdivided

L2B3 22nd Street
Bemidji MN 56601

Status: Hold

Description:

Commercial lot one block south of Paul Bunyan Dr. Zoned B-2. High traffic on paved city street with curb and gutter. Excellent development opportunity just off Paul Bunyan Dr. Adjoining lot for sale also.

Additional Details:

Lot Acres	0.78
Lot Dimensions	214x125x220x110
School District	31
Taxes	\$3,888
Taxes with Assessments	\$3,888
Tax Year	2024

Additional Features:

Driving Directions:

Paul Bunyan Dr, south on Delton Ave, west on 22nd St. Property on the NE corner of Norton and 22nd St.



Listed By:
Century 21 Dickinson

Affinity Real Estate Inc. participates in the Regional Multiple Listing Service of Minnesota, Inc Broker Reciprocity (sm) program, allowing us to display other broker's listings on our website. All properties are subject to prior sale, change or withdrawal.



Call Affinity Real Estate

218-237-3333

info@affinityrealestate.com



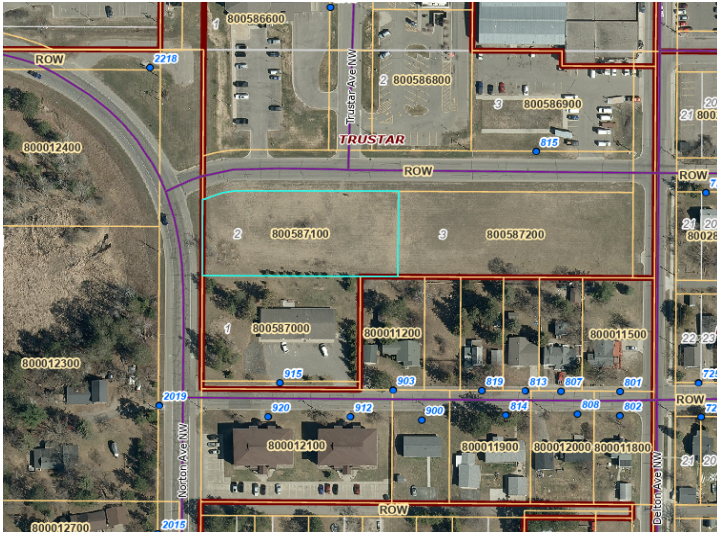
Affinity Real Estate - 600 Park Avenue South - Park Rapids MN 56470



website: www.AffinityRealEstate.com | email: info@affinityrealestate.com | office: 218-237-3333 | fax: 218-237-3377



\$199,000
 MLS 5588738 Land
 L2B3 22nd Street
 Bemidji MN 56601



website: www.AffinityRealEstate.com | email: info@affinityrealestate.com | office: 218-237-3333 | fax: 218-237-3377



\$199,000
 MLS 5588738 Land
 L2B3 22nd Street
 Bemidji MN 56601