



MLS 5588739 Land

\$219,000

0.94 Acres
Subdivided

L3B3 22nd Street
Bemidji MN 56601

Status: Active

Description:

Commercial lot one block south of Paul Bunyan Dr. Zoned B-2. High traffic on paved city street with curb and gutter. Excellent development opportunity just off Paul Bunyan Dr. Adjoining lot also for sale.

Additional Details:

Lot Acres	0.94
Lot Dimensions	326x125x326x125
School District	31
Taxes	\$4,660
Taxes with Assessments	\$4,660
Tax Year	2024

Additional Features:

Driving Directions:

Paul Bunyan Dr, south on Delton Ave, west on 22nd St. Property on the SW corner of Delton and 22nd St.



Listed By:
Century 21 Dickinson

Affinity Real Estate Inc. participates in the Regional Multiple Listing Service of Minnesota, Inc Broker Reciprocity (sm) program, allowing us to display other broker's listings on our website. All properties are subject to prior sale, change or withdrawal.



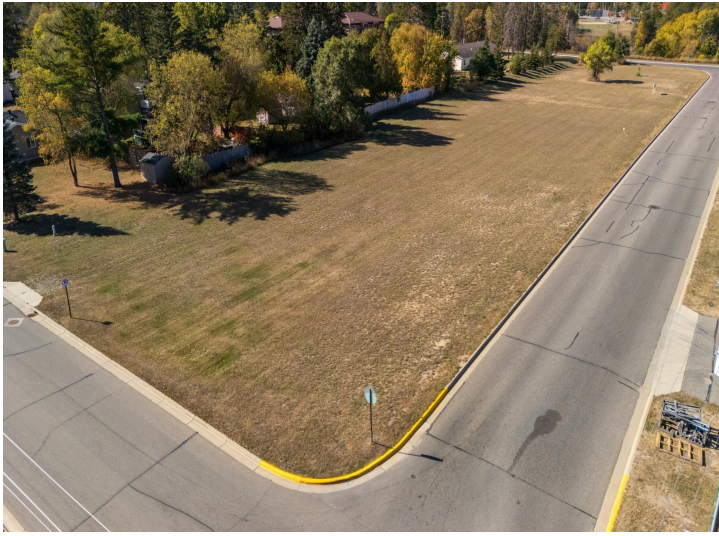
Call Affinity Real Estate

218-237-3333

info@affinityrealestate.com



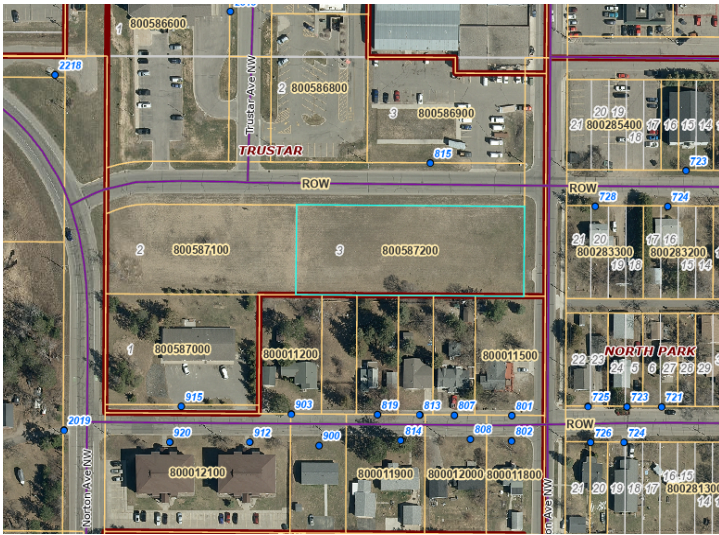
Affinity Real Estate - 600 Park Avenue South - Park Rapids MN 56470



website: www.AffinityRealEstate.com | email: info@affinityrealestate.com | office: 218-237-3333 | fax: 218-237-3377



\$219,000
MLS 5588739 Land
L3B3 22nd Street
Bemidji MN 56601



website: www.AffinityRealEstate.com | email: info@affinityrealestate.com | office: 218-237-3333 | fax: 218-237-3377



\$219,000
MLS 5588739 Land
L3B3 22nd Street
Bemidji MN 56601