



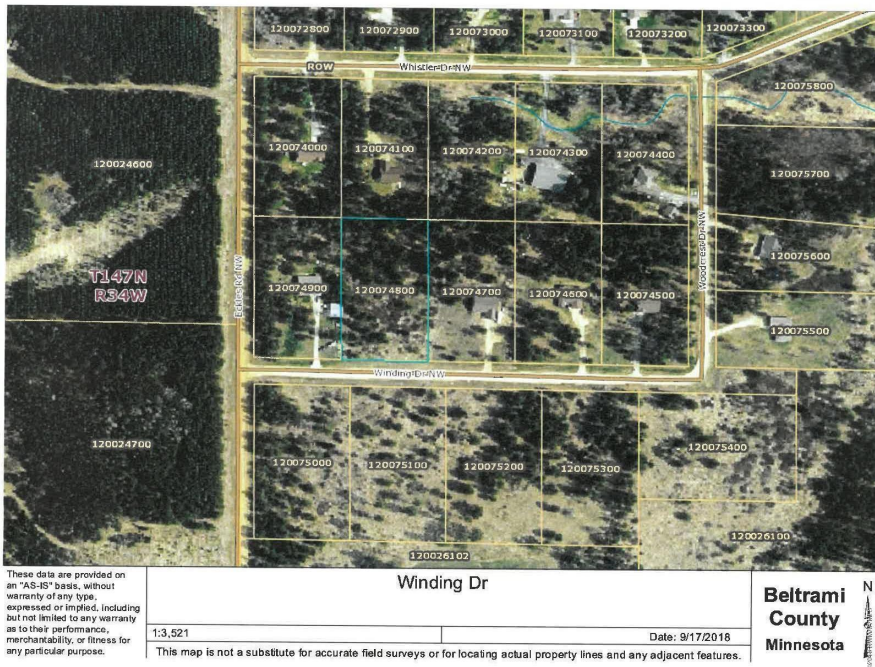
MLS 5592008 Residential

\$207,000

1,997 sq ft
3 bedrooms
2 baths

TBD Winding Drive
Bemidji MN 56601

Status: Canceled



Description:

Pended before Print

Additional Details:

Year Built	2018
Lot Acres	1.68
Lot Dimensions	205x350
Garage Stalls	3
School District	31
Taxes	\$216
Taxes with Assessments	\$216
Tax Year	2018

Additional Features:

Basement: None **Fuel:** Electric, Propane **Garage:** 3 **Heat:** Forced Air **Sewer:** Private Sewer **Water:** Private **Air Conditioning:** Central Air

Driving Directions:

N on Eckles Rd to Winding Dr, Right property on the left



Listed By:
Coldwell Banker Crown Realtors

Affinity Real Estate Inc. participates in the Regional Multiple Listing Service of Minnesota, Inc Broker Reciprocity (sm) program, allowing us to display other broker's listings on our website. All properties are subject to prior sale, change or withdrawal.



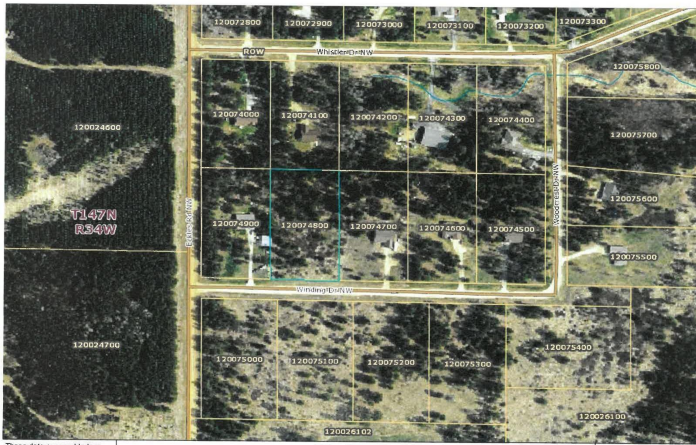
Call Affinity Real Estate

218-237-3333

info@affinityrealestate.com



Affinity Real Estate - 600 Park Avenue South - Park Rapids MN 56470



These data are provided on an "AS-IS" basis, without warranty of any kind, expressed or implied, including but not limited to any warranty as to their performance, merchantability, or fitness for any particular purpose.

Winding Dr
13.521
Date: 9/17/2018
This map is not a substitute for accurate field surveys or for locating actual property lines and any adjacent features.

Beltrami
County
Minnesota

website: www.AffinityRealEstate.com | email: info@affinityrealestate.com | office: 218-237-3333 | fax: 218-237-3377



\$207,000
MLS 5592008 Residential
TBD Winding Drive
Bemidji MN 56601