



MLS 5621413 Lake Land

\$60,500

Description:

Long Lake Affordable Lot in a newer subdivision of new and very nice Homes. Association takes care of Lawn care, water, sewer, sanitation, Dock, Boat Slip, shared amenities and beach access to 600 feet of sandy shore line. Great Lake, Great Dock System, Great Neighbors and Lake Views, makes for the perfect place for your Dream Home. This is the last lot available.

Additional Details:

Lot Acres	0.07
Lot Dimensions	32x88x32x88
School District	549
Taxes	\$556
Taxes with Assessments	\$556
Tax Year	2023

Additional Features:

Driving Directions:

From Vergas go East on Hwy 228 for around 4.5 miles to Co Rd 36 turn Right go 1.1 miles to Long Harbor Rd, it will be the 1st sign on Left. It will also have a Lot # sign. New road will go behind lot see aerials under the "Documents" tab.



Listed By:
Dane Arthur Real Estate Agency-Crosslake

Affinity Real Estate Inc. participates in the Regional Multiple Listing Service of Minnesota, Inc Broker Reciprocity (sm) program, allowing us to display other broker's listings on our website. All properties are subject to prior sale, change or withdrawal.



Call Affinity Real Estate

218-237-3333

info@affinityrealestate.com



Affinity Real Estate - 600 Park Avenue South - Park Rapids MN 56470

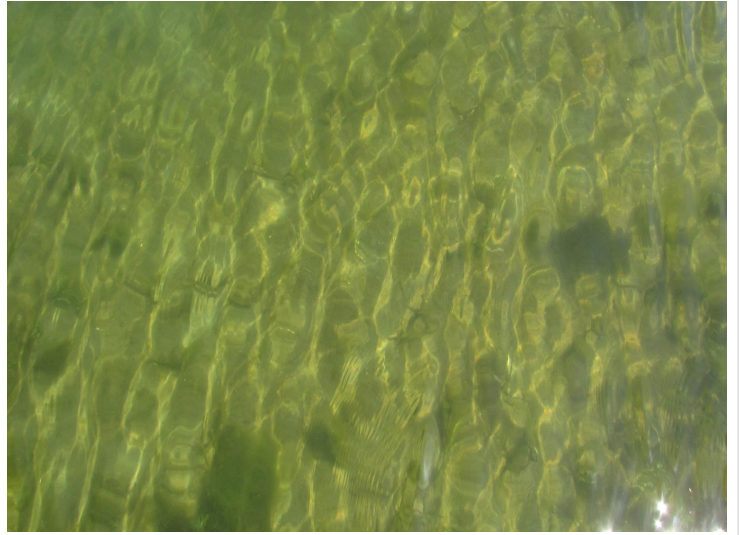


website: www.AffinityRealEstate.com | email: info@affinityrealestate.com | office: 218-237-3333 | fax: 218-237-3377



\$60,500

MLS 5621413 Lake Land
37887 Long Harbor Lane
Frazee MN 56544



website: www.AffinityRealEstate.com | email: info@affinityrealestate.com | office: 218-237-3333 | fax: 218-237-3377

Affinity
REAL ESTATE INC

\$60,500

MLS 5621413 Lake Land
37887 Long Harbor Lane
Frazee MN 56544



website: www.AffinityRealEstate.com | email: info@affinityrealestate.com | office: 218-237-3333 | fax: 218-237-3377



\$60,500

MLS 5621413 Lake Land
37887 Long Harbor Lane
Frazee MN 56544



website: www.AffinityRealEstate.com | email: info@affinityrealestate.com | office: 218-237-3333 | fax: 218-237-3377



\$60,500
MLS 5621413 Lake Land
37887 Long Harbor Lane
Frazee MN 56544