



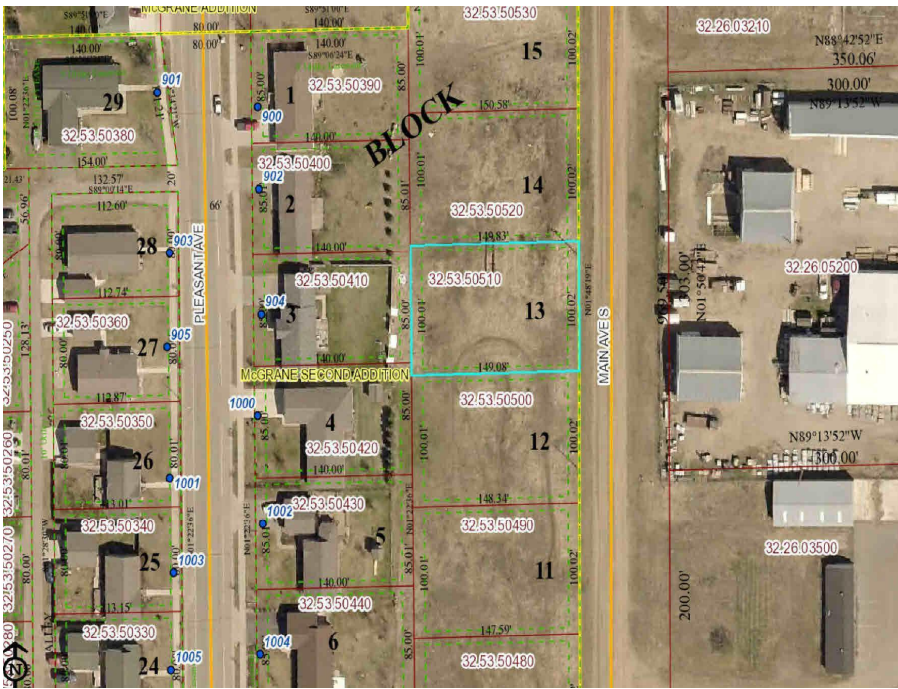
MLS 5669928 Land

**\$17,500**

0.34 Acres  
Raw Land

905 Main Avenue  
Park Rapids MN 56470

Status: Active



**Description:**

A1428 Level building lot with the utilities in the street and ready to build. Conveniently located close to shops and restaurants.

**Additional Details:**

Lot Acres	0.34
Lot Dimensions	100x149x100x149
School District	309
Taxes	\$228
Taxes with Assessments	\$590
Tax Year	2023

**Additional Features:**

**Driving Directions:**

From Hwys. 71/34 in Park Rapids. West on Hwy 34 to Main Ave. South/left on Main Ave South. Follow to lots on the right located just North of 11th St. W.



Listed By:  
Coldwell Banker Crown Realtors

Affinity Real Estate Inc. participates in the Regional Multiple Listing Service of Minnesota, Inc Broker Reciprocity (sm) program, allowing us to display other broker's listings on our website. All properties are subject to prior sale, change or withdrawal.



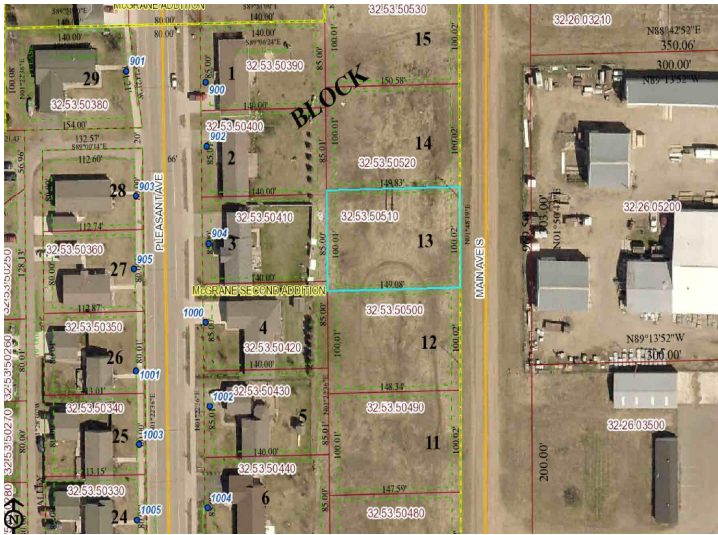
Call Affinity Real Estate

**218-237-3333**

[info@affinityrealestate.com](mailto:info@affinityrealestate.com)



Affinity Real Estate - 600 Park Avenue South - Park Rapids MN 56470



website: [www.AffinityRealEstate.com](http://www.AffinityRealEstate.com) | email: [info@affinityrealestate.com](mailto:info@affinityrealestate.com) | office: 218-237-3333 | fax: 218-237-3377



**\$17,500**  
 MLS 5669928 Land  
 905 Main Avenue  
 Park Rapids MN 56470