



MLS 5729230 Land

**\$29,900**

4.21 acres

0 Hard Pine  
Park Rapids MN 56470

(Active)

**Description:**

Whispering Winds Addition - Heavily wooded 4.2 acre parcel that adjoins ski and hiking trails plus you are near golf course, ATV and snowmobile trails. Perfect accessibility and within 10 minutes to Park Rapids or Itasca State Park.  
\$29,900

**Additional Details:**

Lot Acres	4.210
School District	309 - Park Rapids
Taxes	\$232
Taxes with Assessments	\$232
Tax Year	2021

**Additional Features:**

Lot Description: Irregular Lot, Tree Coverage - Medium  
Road Frontage: Cul De Sac, Unpaved Streets, Township

**Driving Directions:**

From Park Rapids go North on Hwy 71 to Hard Pine Drive and turn left. Take an immediate left at Hard Pine Trail. Property is in Cul-de-sac on SE side.



Listed By:  
Affinity Real Estate Inc.

Affinity Real Estate Inc. participates in the Regional Multiple Listing Service of Minnesota, Inc Broker Reciprocity (sm) program, allowing us to display other broker's listings on our website. All properties are subject to prior sale, change or withdrawal.



**Call Affinity Real Estate**

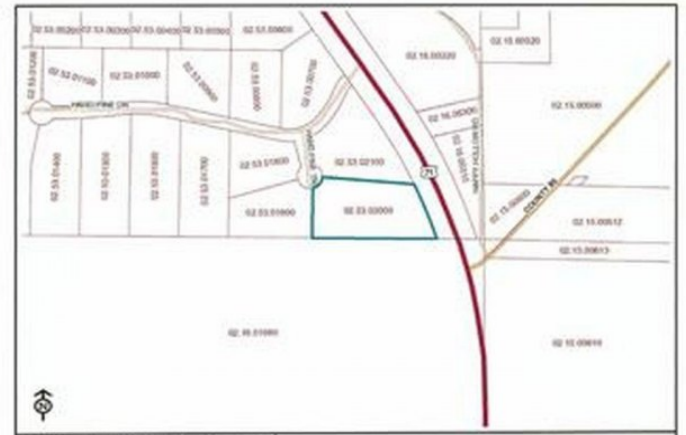
**218-237-3333**

**info@affinityrealestate.com**



**Affinity Real Estate - 600 Park Avenue South - Park Rapids MN 56470**





© RMLSMN  
 Hubbard County - 301 Court Ave, Park Rapids, MN 56470  
 Created 10/29/2019 at 11:20 AM

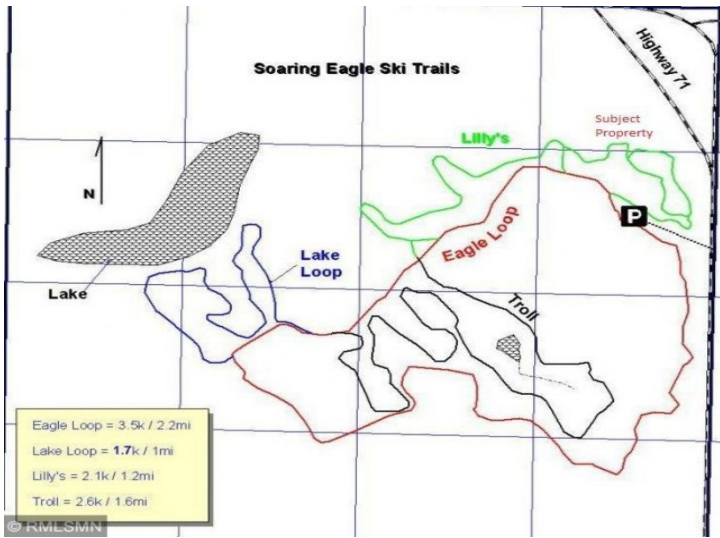
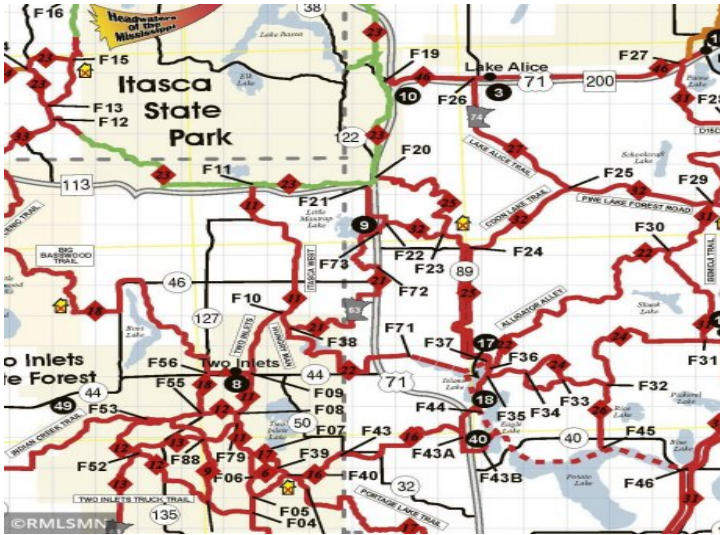
© RMLSMN  
 Hubbard County - 301 Court Ave, Park Rapids, MN 56470  
 Created 5/7/2018 at 10:01 PM

website: [www.AffinityRealEstate.com](http://www.AffinityRealEstate.com) | email: [info@affinityrealestate.com](mailto:info@affinityrealestate.com) | office: 218-237-3333 | fax: 218-237-3377



**\$29,900**  
 MLS 5729230 Land  
 0 Hard Pine  
 Park Rapids MN 56470





website: [www.AffinityRealEstate.com](http://www.AffinityRealEstate.com) | email: [info@affinityrealestate.com](mailto:info@affinityrealestate.com) | office: 218-237-3333 | fax:218-237-3377



**\$29,900**  
 MLS 5729230 Land  
 0 Hard Pine  
 Park Rapids MN 56470