

MLS 5745473 Lake Land

**\$23,900**

#### Description:

Great building lot adjacent to Spider Lake in Hirsch's Towering Pines. Build your getaway cabin and enjoy the amenities of the lake without the upkeep.

#### Additional Details:

Lot Acres	0.41
Lot Dimensions	120x150x120x150
School District	308
Taxes	\$130
Taxes with Assessments	\$130
Tax Year	2022

#### Additional Features:

#### Driving Directions:

From 34/71 in Park Rapids, East on 34 to Nevis. North of Nevis on County 2, left on Harley Dr. to 2nd lot on left.



Listed By:  
Wolff & Simon Real Estate

Affinity Real Estate Inc. participates in the Regional Multiple Listing Service of Minnesota, Inc Broker Reciprocity (sm) program, allowing us to display other broker's listings on our website. All properties are subject to prior sale, change or withdrawal.



Call Affinity Real Estate

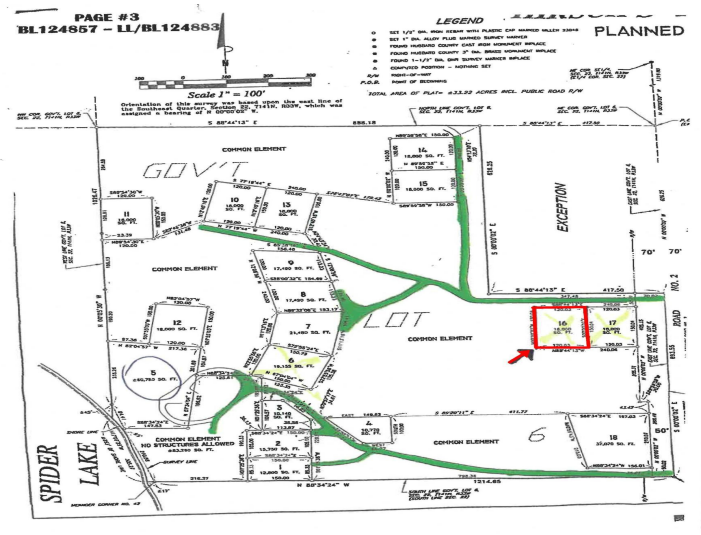
**218-237-3333**

[info@affinityrealestate.com](mailto:info@affinityrealestate.com)



Affinity Real Estate - 600 Park Avenue South - Park Rapids MN 56470





website: [www.AffinityRealEstate.com](http://www.AffinityRealEstate.com) | email: [info@affinityrealestate.com](mailto:info@affinityrealestate.com) | office: 218-237-3333 | fax: 218-237-3377



**\$23,900**  
MLS 5745473 Lake Land  
TBD Harley Dr. Lot 16  
Nevis MN 56467