



MLS 5755100 Lake Home

\$233,900

800 sq ft
1 bedrooms
1 baths

715 Lake Shore Drive
Bemidji MN 56601

Waterfront: Bemidji (main lake)

Status: Closed

Description:

Welcome to Bemidji's premier condominium development on the South Shore of Lake Bemidji! The Bixby will offer secure indoor parking, two elevators, triple pane windows, soundproof insulation, and private balconies. Quartz countertops and Onyx Shower systems in every unit. Appliance, kitchen and trim packages available. Association fee will include natural gas, water, sewer and refuse. This floor plan, 'The Babe' is located on either end of the building allowing both lake and south facing views. 1 bedroom 1 bath and 800 sf., unit 100 is located on the west end of the first floor. The Babe is available on both floors. Choose early and get your favorite unit just the way you like it!

Additional Details:

Year Built	2022
Lot Dimensions	348x228
Garage Stalls	1
School District	31
Taxes	(unreported)
Taxes with Assessments	(unreported)
Tax Year	2021

Additional Features:

Basement: None **Fuel:** Electric **Garage:** 1 **Heat:** Heat Pump **Sewer:** City Sewer/Connected **Water:** City Water/Connected **Air Conditioning:** Central Air

Driving Directions:

East on 1st Street to Central Ave SE, Left to Lakeshore Drive



Listed By:
Lake-N-Woods Realty, Inc.

Affinity Real Estate Inc. participates in the Regional Multiple Listing Service of Minnesota, Inc Broker Reciprocity (sm) program, allowing us to display other broker's listings on our website. All properties are subject to prior sale, change or withdrawal.



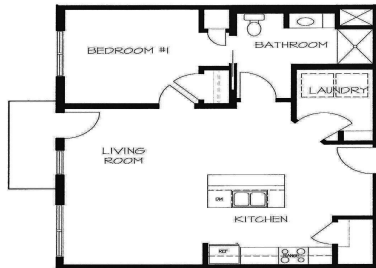
Call Affinity Real Estate

218-237-3333

info@affinityrealestate.com



Affinity Real Estate - 600 Park Avenue South - Park Rapids MN 56470



1 BEDROOM
#100

Updated June 13, 2022



LAKE VIEW

\$558,500	215	\$356,900	214	\$273,053	213	\$356,900	212	\$367,607	211	\$558,500
\$247,400	SOLD	SOLD	SOLD	SOLD	SOLD	SOLD	SOLD	SOLD	SOLD	\$247,400
\$237,200	201	\$314,100	202	\$249,900	203	\$234,100	204	\$314,100	205	\$237,200
SOLD	SOLD	SOLD	SOLD	SOLD	SOLD	SOLD	SOLD	SOLD	SOLD	SOLD

LEVEL 2 PLAN

\$233,900	115	\$346,595	114	\$252,144	113	\$336,500	112	\$346,595	111	\$538,500
\$227,900	100	SOLD	SOLD	SOLD	SOLD	SOLD	SOLD	SOLD	SOLD	\$227,900
\$227,900	101	\$303,900	102	\$239,600	103	\$224,300	104	\$303,900	105	\$227,900
SOLD	SOLD	SOLD	SOLD	SOLD	SOLD	SOLD	SOLD	SOLD	SOLD	SOLD

UNIT 106
ADA ACCESSIBLE

LEVEL 1 PLAN



Lake N Woods
Realty, Inc.
1032 Paul Bunyan Drive South
(218) 751-2538

www.lakenwoods.com



website: www.AffinityRealEstate.com | email: info@affinityrealestate.com | office: 218-237-3333 | fax: 218-237-3377



\$233,900

MLS 5755100 Lake Home
715 Lake Shore Drive
Bemidji MN 56601



website: www.AffinityRealEstate.com | email: info@affinityrealestate.com | office: 218-237-3333 | fax: 218-237-3377

Affinity
REAL ESTATE INC

\$233,900
MLS 5755100 Lake Home
715 Lake Shore Drive
Bemidji MN 56601



website: www.AffinityRealEstate.com | email: info@affinityrealestate.com | office: 218-237-3333 | fax: 218-237-3377



\$233,900
MLS 5755100 Lake Home
715 Lake Shore Drive
Bemidji MN 56601