



MLS 5755115 Lake Home

\$224,300

830 sq ft
1 bedrooms
1 baths

715 Lake Shore Drive
Bemidji MN 56601

Waterfront: Bemidji (main lake)

Status: Hold

Description:

Welcome to Bemidji's premier condominium development on the South Shore of Lake Bemidji! The Bixby will offer secure indoor parking, two elevators, triple pane windows, soundproof insulation, private balconies and Quartz countertops. Appliance, kitchen and trim packages available. Association fee will include natural gas, water, sewer and refuse. This floor plan, 'The MacGregor' is 1 bedroom 1 bath and 830 sf. Unit 104 is located on the first floor with south facing views. The MacGregor is available on both floors with both exposures. Choose early and get your favorite unit just the way you like it!

Additional Details:

Year Built	2022
Lot Dimensions	348x228
Garage Stalls	1
School District	31
Taxes	(unreported)
Taxes with Assessments	(unreported)
Tax Year	2021

Additional Features:

Basement: None **Fuel:** Electric **Garage:** 1 **Heat:** Heat Pump **Sewer:** City Sewer/Connected **Water:** City Water/Connected **Air Conditioning:** Central Air

Driving Directions:

East on 1st Street to Central Ave SE, Left to Lakeshore Drive



Listed By:
Lake-N-Woods Realty, Inc.

Affinity Real Estate Inc. participates in the Regional Multiple Listing Service of Minnesota, Inc Broker Reciprocity (sm) program, allowing us to display other broker's listings on our website. All properties are subject to prior sale, change or withdrawal.



Call Affinity Real Estate

218-237-3333

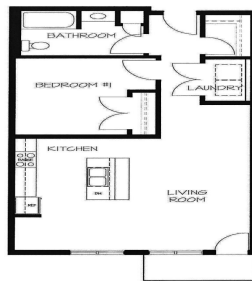
info@affinityrealestate.com



Affinity Real Estate - 600 Park Avenue South - Park Rapids MN 56470



Updated May 30, 2023



1 BEDROOM #104

©NWMAR

LAKE VIEW

\$558,500	215	\$356,900	\$273,000	\$356,900	\$367,607	210	\$558,500
\$247,400	214	SOLD	SOLD	SOLD	SOLD	211	\$247,400
SOLD	201	SOLD	202	203	204	205	206
\$237,200	\$314,100	\$249,900	\$249,900	\$314,100	\$249,900	\$314,100	\$237,200

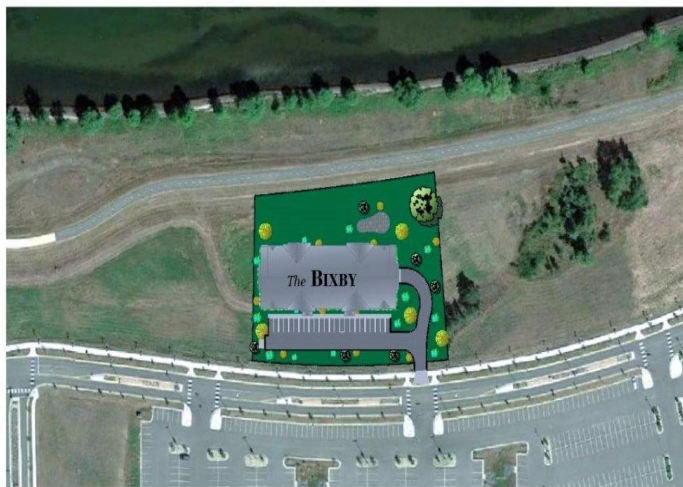
LEVEL 2 PLAN

LAKE VIEW

\$233,900	115	\$346,595	\$259,708	\$336,500	\$346,595	110	\$538,500
SOLD	114	SOLD	113	112	111	110	\$233,900
LEASED	101	102	103	104	105	106	107
\$227,000	\$303,900	\$239,600	\$224,300	\$303,900	\$239,600	\$303,900	\$227,000

UNIT 106 ADA ACCESSIBLE LEVEL 1 PLAN

Lake N Woods Realty, Inc.
 1032 Paul Bunyan Drive South (218) 751-2538 www.lakenwoods.com



©NWMAR

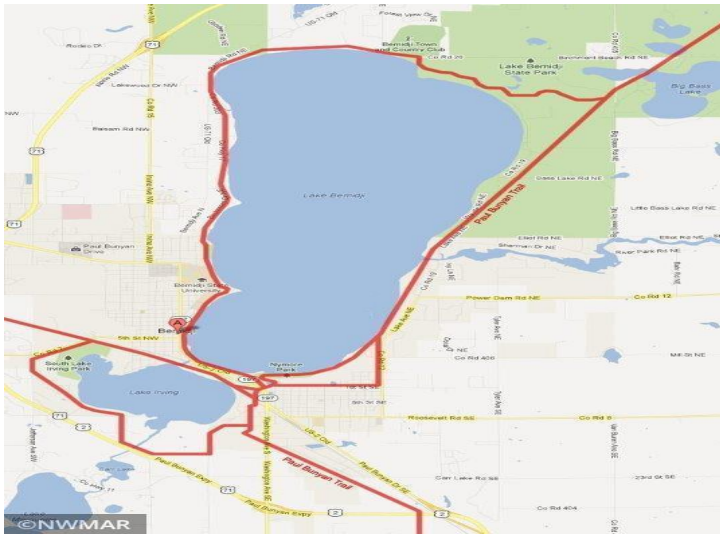


©NWMAR

website: www.AffinityRealEstate.com | email: info@affinityrealestate.com | office: 218-237-3333 | fax: 218-237-3377



\$224,300
 MLS 5755115 Lake Home
 715 Lake Shore Drive
 Bemidji MN 56601



website: www.AffinityRealEstate.com | email: info@affinityrealestate.com | office: 218-237-3333 | fax:218-237-3377



\$224,300
MLS 5755115 Lake Home
715 Lake Shore Drive
Bemidji MN 56601