



MLS 5755134 Lake Home

\$273,053

830 sq ft
1 bedrooms
1 baths

715 Lake Shore Drive
Bemidji MN 56601

Waterfront: Bemidji (main lake)

Status: Closed

Description:

Welcome to Bemidji's premier condominium development on the South Shore of Lake Bemidji! The Bixby will offer secure indoor parking, two elevators, triple pane windows, soundproof insulation, and private balconies. Quartz countertops and Onyx Shower systems in every unit. Appliance, kitchen, flooring, and trim packages available. Association fee will include natural gas, water, sewer and refuse. This floor plan, 'The MacGregor', offers 1 bedroom 1 bath and 830 sf. Unit 213 is located on the second floor with Lake facing views. The MacGregor is available on both floors with lake and south facing views. Choose early and get your favorite unit just the way you like it!

Additional Details:

Year Built	2022
Lot Dimensions	348x228
Garage Stalls	1
School District	31
Taxes	(unreported)
Taxes with Assessments	(unreported)
Tax Year	2021

Additional Features:

Basement: None **Fuel:** Electric **Garage:** 1 **Heat:** Heat Pump **Sewer:** City Sewer/Connected **Water:** City Water/Connected **Air Conditioning:** Central Air

Driving Directions:

East on 1st Street to Central Ave SE, Left to Lakeshore Drive



Listed By:
Lake-N-Woods Realty, Inc.

Affinity Real Estate Inc. participates in the Regional Multiple Listing Service of Minnesota, Inc Broker Reciprocity (sm) program, allowing us to display other broker's listings on our website. All properties are subject to prior sale, change or withdrawal.



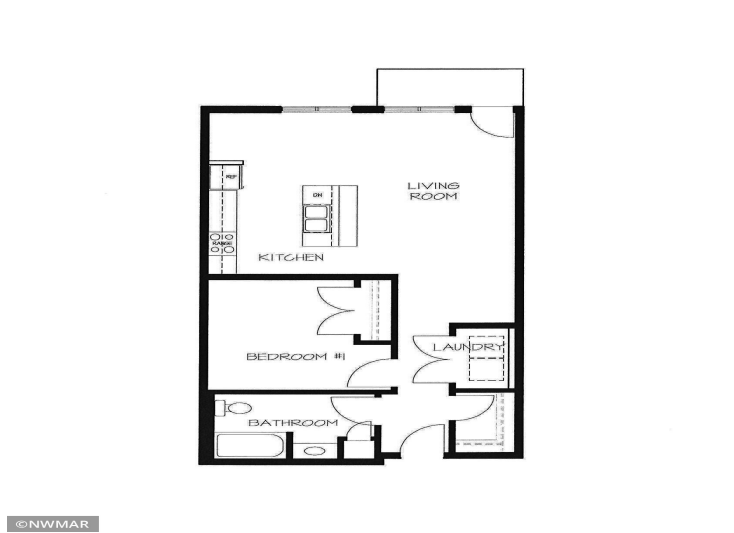
Call Affinity Real Estate

218-237-3333

info@affinityrealestate.com



Affinity Real Estate - 600 Park Avenue South - Park Rapids MN 56470



website: www.AffinityRealEstate.com | email: info@affinityrealestate.com | office: 218-237-3333 | fax: 218-237-3377



\$273,053
 MLS 5755134 Lake Home
 715 Lake Shore Drive
 Bemidji MN 56601



website: www.AffinityRealEstate.com | email: info@affinityrealestate.com | office: 218-237-3333 | fax: 218-237-3377



\$273,053
 MLS 5755134 Lake Home
 715 Lake Shore Drive
 Bemidji MN 56601



website: www.AffinityRealEstate.com | email: info@affinityrealestate.com | office: 218-237-3333 | fax: 218-237-3377



\$273,053
 MLS 5755134 Lake Home
 715 Lake Shore Drive
 Bemidji MN 56601



Updated November 19, 2021



LAKE VIEW



LEVEL 2 PLAN

LAKE VIEW



UNIT 106 ADA ACCESSIBLE

LEVEL 1 PLAN



Lake N Woods
Realty, Inc.

1032 Paul Bunyan Drive South

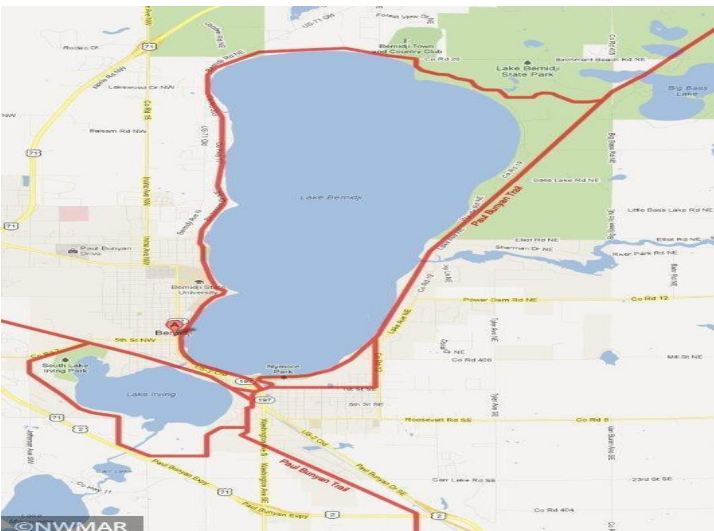
(218) 751-2538

www.lakewood.com

©NWMAR



©NWMAR



©NWMAR

website: www.AffinityRealEstate.com | email: info@affinityrealestate.com | office: 218-237-3333 | fax: 218-237-3377



\$273,053

MLS 5755134 Lake Home

715 Lake Shore Drive

Bemidji MN 56601



LAKE VIEW

\$555,500	215	\$356,900	\$273,053	\$356,900	\$367,607	\$558,500
\$247,400	SOLD	SOLD	SOLD	SOLD	SOLD	\$247,400
SOLD	201	202	203	204	205	206
\$237,200	\$314,100	\$249,900	\$234,100	\$314,100	\$249,900	\$314,100

LEVEL 2 PLAN

LAKE VIEW

\$233,900	115	\$346,595	\$259,708	\$336,500	\$346,595	\$538,500
SOLD	114	SOLD	113	SOLD	112	111
SOLD	101	102	103	104	105	106
\$227,000	\$303,900	\$239,600	\$224,300	\$303,900	\$239,600	\$303,900

UNIT 106:
ADA ACCESSIBLE

LEVEL 1 PLAN



Lake N Woods
Realty, Inc.
1032 Paul Bunyan Drive South (218) 751-2538

www.lakenwoods.com

website: www.AffinityRealEstate.com | email: info@affinityrealestate.com | office: 218-237-3333 | fax: 218-237-3377



\$273,053
MLS 5755134 Lake Home
715 Lake Shore Drive
Bemidji MN 56601