



MLS 5755224 Lake Home

\$249,900

900 sq ft
1 bedrooms
1 baths

715 Lake Shore Drive
Bemidji MN 56601

Waterfront: Bemidji (main lake)

Status: Hold

Description:

Welcome to Bemidji's premier condominium development on the South Shore of Lake Bemidji! The Bixby will offer secure indoor parking, two elevators, triple pane windows, soundproof insulation, and private balconies. Quartz countertops and Onyx Shower systems in every unit. Appliance, kitchen and trim packages available. Association fee will include natural gas, water, sewer and refuse. This floor plan, 'The Schoolcraft' is 1 bedroom 1 bath and 900 sf. Unit 206 is located on the second floor with south facing views. The Schoolcraft is available on both floors with southern exposure. Choose early and get your favorite unit just the way you like it!

Additional Details:

Year Built	2022
Lot Dimensions	348x228
Garage Stalls	1
School District	31
Taxes	\$982
Taxes with Assessments	\$982
Tax Year	2023

Additional Features:

Basement: None **Fuel:** Electric **Garage:** 1 **Heat:** Heat Pump **Sewer:** City Sewer/Connected **Water:** City Water/Connected **Air Conditioning:** Central Air

Driving Directions:

East on 1st Street to Central Ave SE, Left to Lakeshore Drive



Listed By:
Lake-N-Woods Realty, Inc.

Affinity Real Estate Inc. participates in the Regional Multiple Listing Service of Minnesota, Inc Broker Reciprocity (sm) program, allowing us to display other broker's listings on our website. All properties are subject to prior sale, change or withdrawal.



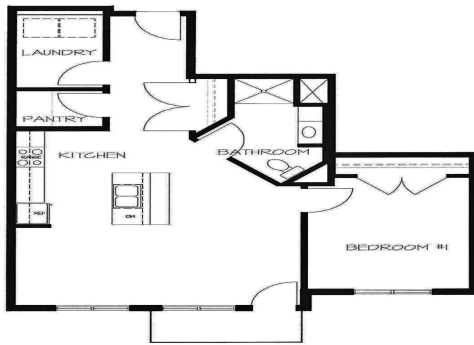
Call Affinity Real Estate

218-237-3333

info@affinityrealestate.com



Affinity Real Estate - 600 Park Avenue South - Park Rapids MN 56470



1 BEDROOM #206



Updated May 30, 2023



LAKE VIEW

\$558,500	215	\$356,900	\$273,000	\$356,900	\$367,607	210	\$558,500
SOLD	SOLD	SOLD	SOLD	SOLD	SOLD	SOLD	SOLD
\$247,400	201	202	203	204	205	206	207
SOLD	SOLD	SOLD	LEASED	LEASED	LEASED	LEASED	LEASED
\$237,200	\$314,100	\$249,900	\$314,100	\$249,900	\$314,100	\$314,100	\$237,200

LEVEL 2 PLAN

LAKE VIEW

\$233,900	115	\$346,595	\$259,705	\$336,500	\$346,595	110	\$538,500
LEASED	LEASED	SOLD	LEASED	SOLD	LEASED	LEASED	LEASED
101	102	103	104	105	106	107	108
LEASED	SOLD	LEASED	LEASED	LEASED	LEASED	LEASED	LEASED
\$227,000	\$303,900	\$239,600	\$224,300	\$303,900	\$239,600	\$303,900	\$227,000

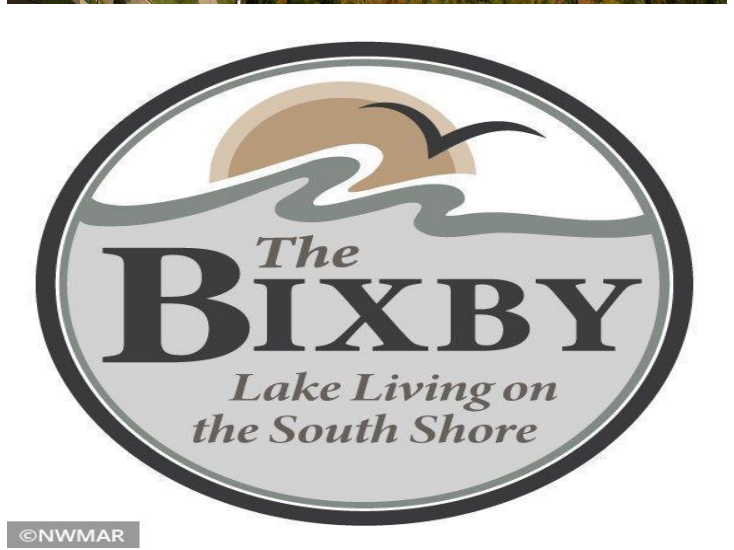
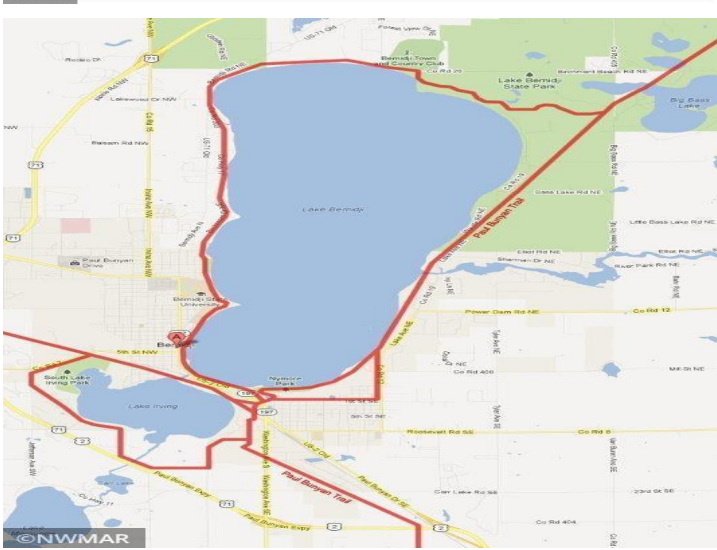
UNIT 106 ADA ACCESSIBLE LEVEL 1 PLAN

Lake N Woods Realty, Inc.
 1032 Paul Bunyan Drive South (218) 751-2538 www.lakenwoods.com

website: www.AffinityRealEstate.com | email: info@affinityrealestate.com | office: 218-237-3333 | fax: 218-237-3377



\$249,900
 MLS 5755224 Lake Home
 715 Lake Shore Drive
 Bemidji MN 56601



website: www.AffinityRealEstate.com | email: info@affinityrealestate.com | office: 218-237-3333 | fax:218-237-3377



\$249,900
 MLS 5755224 Lake Home
 715 Lake Shore Drive
 Bemidji MN 56601