



MLS 5755233 Lake Home

\$239,600

900 sq ft
1 bedrooms
1 baths

715 Lake Shore Drive
Bemidji MN 56601

Waterfront: Bemidji (main lake)

Status: Hold

Description:

Welcome to Bemidji's premier condominium development on the South Shore of Lake Bemidji! The Bixby will offer secure indoor parking, two elevators, triple pane windows, soundproof insulation, and private balconies. Quartz countertops and Onyx Shower systems in every unit. Appliance, kitchen and trim packages available. Association fee will include natural gas, water, sewer and refuse. This floor plan, 'The Schoolcraft' is 1 bedroom 1 bath and 900 sf. Unit 103 is located on the first floor with south facing views. The Schoolcraft is available on both floors with southern exposure. Choose early and get your favorite unit just the way you like it!

Additional Details:

Year Built	2022
Lot Dimensions	348x228
Garage Stalls	1
School District	31
Taxes	\$982
Taxes with Assessments	\$982
Tax Year	2023

Additional Features:

Basement: None **Fuel:** Electric **Garage:** 1 **Heat:** Heat Pump **Sewer:** City Sewer/Connected **Water:** City Water/Connected **Air Conditioning:** Central Air

Driving Directions:

East on 1st Street to Central Ave SE, Left to Lakeshore Drive



Listed By:
Lake-N-Woods Realty, Inc.

Affinity Real Estate Inc. participates in the Regional Multiple Listing Service of Minnesota, Inc Broker Reciprocity (sm) program, allowing us to display other broker's listings on our website. All properties are subject to prior sale, change or withdrawal.



Call Affinity Real Estate

218-237-3333

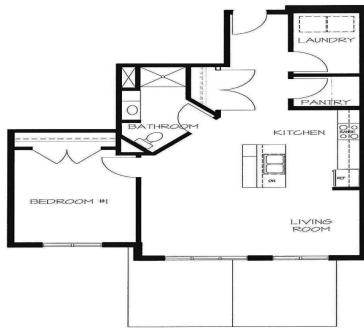
info@affinityrealestate.com



Affinity Real Estate - 600 Park Avenue South - Park Rapids MN 56470



Updated May 30, 2023



1 BEDROOM #103

LAKE VIEW

\$558,500	215	\$356,900	\$273,053	\$356,900	\$367,607	210	\$558,500
\$247,400	214	SOLD	SOLD	SOLD	SOLD	209	\$247,400
SOLD	201	SOLD	203	204	205	206	207
\$237,200	\$314,100	\$249,900	\$314,100	\$249,900	\$314,100	\$237,200	

LEVEL 2 PLAN

LAKE VIEW

\$233,900	115	\$346,595	\$259,708	\$336,500	\$346,595	110	\$538,500
SOLD	114	SOLD	113	112	111	109	\$233,900
101	102	103	104	105	106	107	108
\$227,000	\$303,900	\$239,600	\$224,300	\$303,900	\$239,600	\$303,900	\$227,000

UNIT 106
ADA ACCESSIBLE

LEVEL 1 PLAN



Lake N Woods
Realty, Inc.

1032 Paul Bunyan Drive South

(218) 751-2538

www.lakenwoods.com

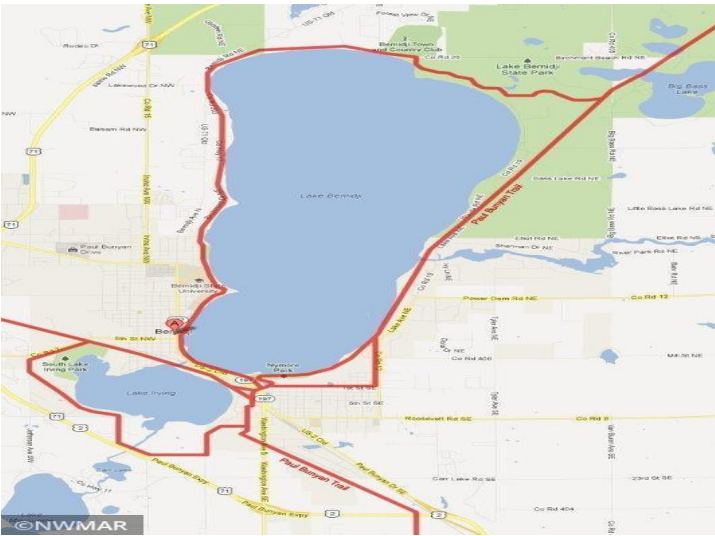


website: www.AffinityRealEstate.com | email: info@affinityrealestate.com | office: 218-237-3333 | fax: 218-237-3377



\$239,600

MLS 5755233 Lake Home
715 Lake Shore Drive
Bemidji MN 56601



website: www.AffinityRealEstate.com | email: info@affinityrealestate.com | office: 218-237-3333 | fax: 218-237-3377

Affinity
REAL ESTATE INC

\$239,600
MLS 5755233 Lake Home
715 Lake Shore Drive
Bemidji MN 56601