



MLS 5755236 Lake Home

\$239,600

900 sq ft
1 bedrooms
1 baths

715 Lake Shore Drive
Bemidji MN 56601

Waterfront: Bemidji (main lake)

Status: Hold

Description:

Welcome to Bemidji's premier condominium development on the South Shore of Lake Bemidji! The Bixby will offer secure indoor parking, two elevators, triple pane windows, soundproof insulation, and private balconies. Quartz countertops and Onyx Shower systems in every unit. Appliance, kitchen and trim packages available. Association fee will include natural gas, water, sewer and refuse. This ADA floor plan, 'The Schoolcraft' is 1 bedroom 1 bath and 900 sf. Unit 106 is located on the first floor with south facing views. The Schoolcraft is available on both floors with southern exposure, this is the only ADA unit. Choose early and get your favorite unit just the way you like it!

Additional Details:


Year Built	2022
Garage Stalls	1
School District	31
Taxes	\$982
Taxes with Assessments	\$982
Tax Year	2023

Additional Features:

Basement: None **Fuel:** Electric **Garage:** 1 **Heat:** Heat Pump **Sewer:** City Sewer/Connected **Water:** City Water/Connected **Air Conditioning:** Central Air

Driving Directions:

East on 1st Street to Central Ave SE, Left to Lakeshore Drive

 Listed By:
Lake-N-Woods Realty, Inc.

Affinity Real Estate Inc. participates in the Regional Multiple Listing Service of Minnesota, Inc Broker Reciprocity (sm) program, allowing us to display other broker's listings on our website. All properties are subject to prior sale, change or withdrawal.



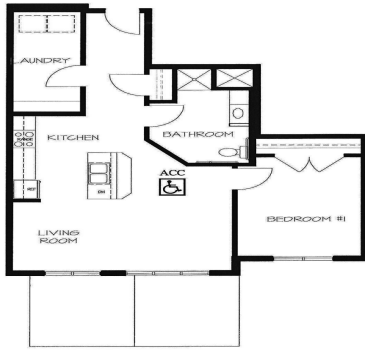
Call Affinity Real Estate
218-237-3333
info@affinityrealestate.com



Affinity Real Estate - 600 Park Avenue South - Park Rapids MN 56470



Updated May 30, 2023



1 BEDROOM #106

LAKE VIEW

\$558,500	215	\$356,900	\$273,093	\$356,900	\$367,607	210	\$558,500
\$247,400	214	SOLD	SOLD	SOLD	SOLD	211	\$247,400
SOLD	201	\$314,100	\$249,900	LEASED	LEASED	206	LEASED
\$237,200	202	\$314,100	\$249,900	\$314,100	\$249,900	207	LEASED

LEVEL 2 PLAN

LAKE VIEW

LEASED	115	\$346,595	\$259,708	\$336,500	\$346,595	110	\$538,500
LEASED	114	SOLD	LEASED	SOLD	LEASED	111	\$233,900
LEASED	101	\$303,900	\$224,300	\$303,900	\$239,600	106	LEASED
LEASED	102	\$303,900	\$239,600	\$303,900	\$303,900	107	LEASED

UNIT 106 ADA ACCESSIBLE LEVEL 1 PLAN

Lake N Woods Realty, Inc.
 1032 Paul Bunyan Drive South (218) 751-2538 www.lakewood.com

©NWMAR



©NWMAR

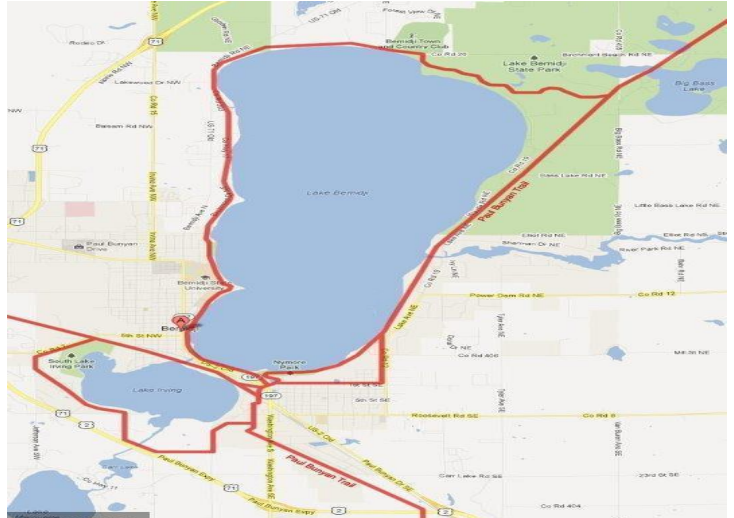


©NWMAR

website: www.AffinityRealEstate.com | email: info@affinityrealestate.com | office: 218-237-3333 | fax: 218-237-3377



\$239,600
 MLS 5755236 Lake Home
 715 Lake Shore Drive
 Bemidji MN 56601



©NWMAR

©NWMAR

website: www.AffinityRealEstate.com | email: info@affinityrealestate.com | office: 218-237-3333 | fax:218-237-3377



\$239,600
 MLS 5755236 Lake Home
 715 Lake Shore Drive
 Bemidji MN 56601