



MLS 5755257 Lake Home

**\$227,000**

839 sq ft  
1 bedrooms  
1 baths

715 Lake Shore Drive  
Bemidji MN 56601

Waterfront: Bemidji (main lake)

Status: Hold

**Description:**

Welcome to Bemidji's premier condominium development on the South Shore of Lake Bemidji! The Bixby will offer secure indoor parking, two elevators, triple pane windows, soundproof insulation, and private balconies. Quartz countertops and Onyx Shower systems in every unit. Appliance, kitchen and trim packages available. Association fee will include natural gas, water, sewer and refuse. This floor plan, 'The Viking' is 1 bedroom 1 bath and 839 sf. Unit 101 is located on the first floor with south facing views. The Viking is available on both floors with southern exposure. Choose early and get your favorite unit just the way you like it!

**Additional Details:**

Year Built	2022
Lot Dimensions	348x228
Garage Stalls	1
School District	31
Taxes	(unreported)
Taxes with Assessments	(unreported)
Tax Year	2021

**Additional Features:**

**Basement:** None **Fuel:** Electric **Garage:** 1 **Heat:** Heat Pump **Sewer:** City Sewer/Connected **Water:** City Water/Connected **Air Conditioning:** Central Air

**Driving Directions:**

East on 1st Street to Central Ave SE, Left to Lakeshore Drive



Listed By:  
Lake-N-Woods Realty, Inc.

Affinity Real Estate Inc. participates in the Regional Multiple Listing Service of Minnesota, Inc Broker Reciprocity (sm) program, allowing us to display other broker's listings on our website. All properties are subject to prior sale, change or withdrawal.



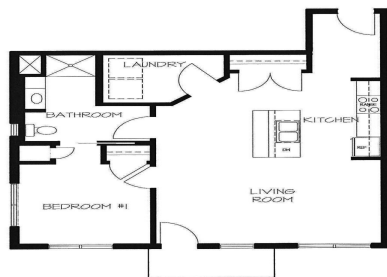
Call Affinity Real Estate

**218-237-3333**

[info@affinityrealestate.com](mailto:info@affinityrealestate.com)



Affinity Real Estate - 600 Park Avenue South - Park Rapids MN 56470



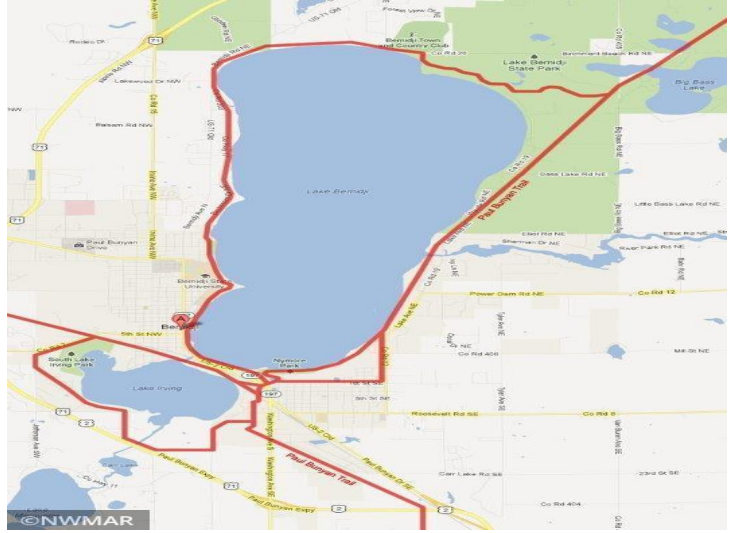
1 BEDROOM #101



website: [www.AffinityRealEstate.com](http://www.AffinityRealEstate.com) | email: [info@affinityrealestate.com](mailto:info@affinityrealestate.com) | office: 218-237-3333 | fax: 218-237-3377



**\$227,000**  
MLS 5755257 Lake Home  
715 Lake Shore Drive  
Bemidji MN 56601



Updated April 21, 2023



**LAKE VIEW**

\$558,500 215 SOLD	\$356,900 214 SOLD	\$273,053 213 SOLD	\$356,900 212 SOLD	\$367,607 211 SOLD	\$558,500 210 SOLD
\$247,400 201 SOLD	\$237,200 202 SOLD	\$314,100 203 SOLD	\$249,900 204 LEASED	\$314,100 205 LEASED	\$249,900 206 LEASED
\$247,400 209 SOLD	\$237,200 208 LEASED	\$314,100 207 LEASED	\$237,200 208 LEASED	\$314,100 207 LEASED	\$237,200 208 LEASED

LEVEL 2 PLAN

**LAKE VIEW**

\$233,900 109 SOLD	\$346,595 115 LEASED	\$346,595 114 SOLD	\$259,708 113 LEASED	\$336,500 112 SOLD	\$346,595 111 LEASED	\$538,500 110 LEASED
\$227,000 101 LEASED	\$227,000 102 SOLD	\$303,900 103 SOLD	\$224,300 104 LEASED	\$303,900 105 SOLD	\$299,600 106 LEASED	\$227,000 108 LEASED

UNIT 106 ADA ACCESSIBLE LEVEL 1 PLAN

**Lake N Woods Realty, Inc.**  
1032 Paul Bunyan Drive South (218) 751-2538 www.lakenwoods.com

website: [www.AffinityRealEstate.com](http://www.AffinityRealEstate.com) | email: [info@affinityrealestate.com](mailto:info@affinityrealestate.com) | office: 218-237-3333 | fax: 218-237-3377



**\$227,000**  
MLS 5755257 Lake Home  
715 Lake Shore Drive  
Bemidji MN 56601