



MLS 5755262 Lake Home

\$227,000

839 sq ft
1 bedrooms
1 baths

715 Lake Shore Drive
Bemidji MN 56601

Waterfront: Bemidji (main lake)

Status: Hold

Description:

Welcome to Bemidji's premier condominium development on the South Shore of Lake Bemidji! The Bixby will offer secure indoor parking, two elevators, triple pane windows, soundproof insulation, and private balconies. Quartz countertops and Onyx Shower systems in every unit. Appliance, kitchen and trim packages available. Association fee will include natural gas, water, sewer and refuse. This floor plan, 'The Viking' is 1 bedroom 1 bath and 839 sf. Unit 108 is located on the first floor with south facing views. The Viking is available on both floors with southern exposure. Choose early and get your favorite unit just the way you like it!

Additional Details:

Year Built	2022
Lot Acres	1.9
Lot Dimensions	348x228
Garage Stalls	1
School District	31
Taxes	(unreported)
Taxes with Assessments	(unreported)
Tax Year	2021

Additional Features:

Basement: None **Fuel:** Electric **Garage:** 1 **Heat:** Heat Pump **Sewer:** City Sewer/Connected **Water:** City Water/Connected **Air Conditioning:** Central Air

Driving Directions:

East on 1st Street to Central Ave SE, Left to Lakeshore Drive



Listed By:
Lake-N-Woods Realty, Inc.

Affinity Real Estate Inc. participates in the Regional Multiple Listing Service of Minnesota, Inc Broker Reciprocity (sm) program, allowing us to display other broker's listings on our website. All properties are subject to prior sale, change or withdrawal.



Call Affinity Real Estate

218-237-3333

info@affinityrealestate.com



Affinity Real Estate - 600 Park Avenue South - Park Rapids MN 56470



Updated March 21, 2023



LAKE VIEW

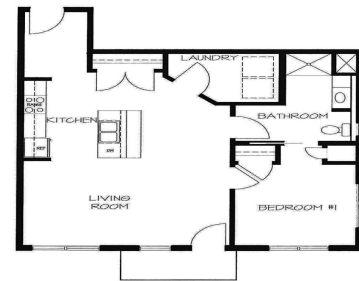
\$558,500 215 SOLD	\$356,900 214 SOLD	\$273,053 213 SOLD	\$356,900 212 SOLD	\$367,607 211 SOLD	\$558,500 210 SOLD
\$247,400 201 SOLD	\$237,200 202 SOLD	\$314,100 203 SOLD	\$234,100 204 SOLD	\$314,100 205 SOLD	\$249,900 206 SOLD
\$237,200 207 SOLD	\$237,200 208 SOLD	\$237,200 209 SOLD	\$237,200 210 SOLD	\$237,200 211 SOLD	\$237,200 212 SOLD

LEVEL 2 PLAN

\$233,900 115 SOLD	\$346,595 114 SOLD	\$259,708 113 SOLD	\$336,500 112 SOLD	\$346,595 111 SOLD	\$558,500 110 SOLD
\$227,000 101 SOLD	\$233,900 102 SOLD	\$239,600 103 SOLD	\$224,300 104 SOLD	\$303,900 105 SOLD	\$239,600 106 SOLD
\$227,000 107 SOLD	\$227,000 108 SOLD	\$227,000 109 SOLD	\$227,000 110 SOLD	\$227,000 111 SOLD	\$227,000 112 SOLD

UNIT 106:
ADA ACCESSIBLE

LEVEL 1 PLAN



1 BEDROOM
#106

Lake N Woods
Realty, Inc.
1032 Paul Bunyan Drive South (218) 751-2538 www.lakewood.com



website: www.AffinityRealEstate.com | email: info@affinityrealestate.com | office: 218-237-3333 | fax: 218-237-3377

Affinity
REAL ESTATE INC

\$227,000
MLS 5755262 Lake Home
715 Lake Shore Drive
Bemidji MN 56601



website: www.AffinityRealEstate.com | email: info@affinityrealestate.com | office: 218-237-3333 | fax: 218-237-3377



\$227,000
 MLS 5755262 Lake Home
 715 Lake Shore Drive
 Bemidji MN 56601



website: www.AffinityRealEstate.com | email: info@affinityrealestate.com | office: 218-237-3333 | fax: 218-237-3377



\$227,000
 MLS 5755262 Lake Home
 715 Lake Shore Drive
 Bemidji MN 56601