



MLS 5760766 Land

\$37,500

2.5 Acres
Raw Land

LOT 10 Bear Tract Lane
Longville MN 56655

Status: Active

Description:

Welcome to Bear Tracts West, bring your plans. This development is sure to please. Located in between Pine River and Longville. Lots range in size from 2.5 acres to 5.8 acres. Each lot is accessible from the township road giving you year round access, power is near. Several lakes and state land close to enjoy fishing, hiking, four wheeling and so much more. Some covenants/restrictions do apply.

Additional Details:

Lot Acres	2.5
Lot Dimensions	228x463x224x365
School District	118
Taxes	\$112
Taxes with Assessments	\$112
Tax Year	2023

Additional Features:

Driving Directions:

From Longville S on State 84 approx 7 miles, right on County 11, then right on Island View Rd. to Bear Tract Lane



Listed By:
Bill Hansen Realty/Longville

Affinity Real Estate Inc. participates in the Regional Multiple Listing Service of Minnesota, Inc Broker Reciprocity (sm) program, allowing us to display other broker's listings on our website. All properties are subject to prior sale, change or withdrawal.



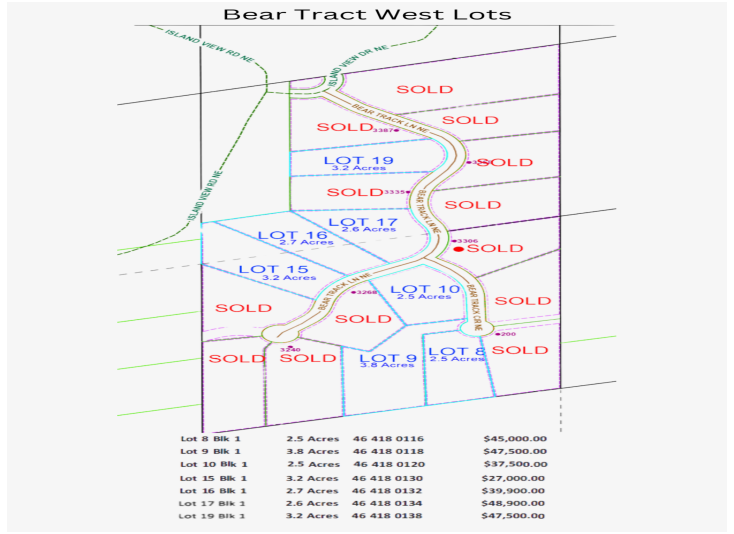
Call Affinity Real Estate

218-237-3333

info@affinityrealestate.com



Affinity Real Estate - 600 Park Avenue South - Park Rapids MN 56470



website: www.AffinityRealEstate.com | email: info@affinityrealestate.com | office: 218-237-3333 | fax: 218-237-3377



\$37,500
 MLS 5760766 Land
 LOT 10 Bear Tract Lane
 Longville MN 56655