



MLS 6013431 Lake Home

\$319,900

1,070 sq ft
1 bedrooms
1 baths

36488 New Manz Drive
Lake George MN 56458

Waterfront: George

Status: Closed

Description:

New Shed/House, Shouse on Lake George lot 3.20 ac with 150ft lake front. Overall shed is 30 x 48. Lake front half is living quarters with loft open to living area below. Living quarters overlook the lake plus a 500 sq ft wrap around covered patio/porch. Open floor plan, Kt, Living, Dining, 1 main floor bdrm plus loft & 1 bath. Garage half 24x30 with 2 large doors 10H X 12W & 12H X 11.6W. Wooded lot, nicely private with easy slope down to the lake. Shouse sets back off the lake leaving plenty of room to the lake for a future lake home if desired. Lake frontage is undeveloped with a variety of vegetation. Lake George is a well-kept secret. Very clean clear water, 825 surface acres, max depth 30ft and great fishing. Relatively equal distance from Walker, Park Rapids & Bemidji, approx. 20 min. \$319,900

Additional Details:

Year Built	2021
Lot Acres	3.2
Lot Dimensions	150x914x188x879
Garage Stalls	2
School District	309
Taxes	\$74
Taxes with Assessments	\$74
Tax Year	2021

Additional Features:

Basement: None **Fuel:** Propane **Garage:** 2 **Heat:** Forced Air **Sewer:** Private Sewer **Water:** Private, Well **Air Conditioning:** Central Air

Driving Directions:

From the town of St. George go south on County Road 4 approximately 1 mile, take a left on New Manz Drive.



Listed By:
askRICK.com dba Walker Area Realty

Affinity Real Estate Inc. participates in the Regional Multiple Listing Service of Minnesota, Inc Broker Reciprocity (sm) program, allowing us to display other broker's listings on our website. All properties are subject to prior sale, change or withdrawal.



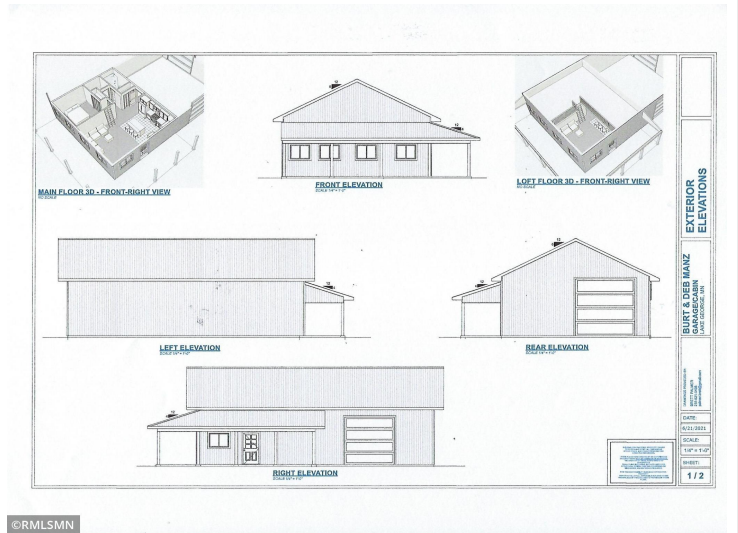
Call Affinity Real Estate

218-237-3333

info@affinityrealestate.com



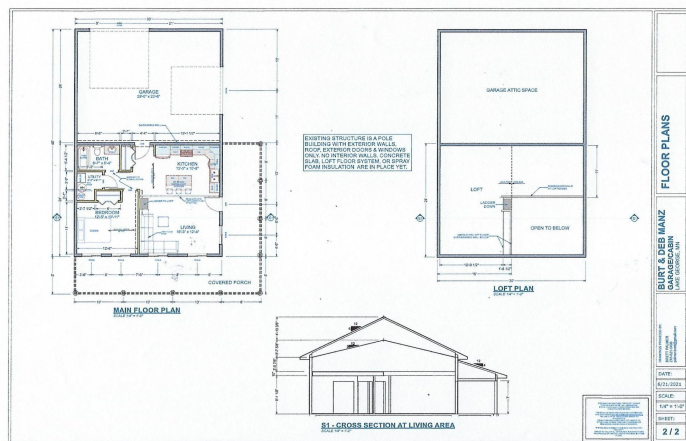
Affinity Real Estate - 600 Park Avenue South - Park Rapids MN 56470



website: www.AffinityRealEstate.com | email: info@affinityrealestate.com | office: 218-237-3333 | fax: 218-237-3377

Affinity
REAL ESTATE INC

\$319,900
MLS 6013431 Lake Home
36488 New Manz Drive
Lake George MN 56458



website: www.AffinityRealEstate.com | email: info@affinityrealestate.com | office: 218-237-3333 | fax: 218-237-3377

Affinity
REAL ESTATE INC

\$319,900
MLS 6013431 Lake Home
36488 New Manz Drive
Lake George MN 56458



© RMLSMN



© RMLSMN



© RMLSMN



© RMLSMN



© RMLSMN



© RMLSMN

website: www.AffinityRealEstate.com | email: info@affinityrealestate.com | office: 218-237-3333 | fax: 218-237-3377



\$319,900
 MLS 6013431 Lake Home
 36488 New Manz Drive
 Lake George MN 56458



website: www.AffinityRealEstate.com | email: info@affinityrealestate.com | office: 218-237-3333 | fax: 218-237-3377



\$319,900
 MLS 6013431 Lake Home
 36488 New Manz Drive
 Lake George MN 56458



website: www.AffinityRealEstate.com | email: info@affinityrealestate.com | office: 218-237-3333 | fax: 218-237-3377



\$319,900
 MLS 6013431 Lake Home
 36488 New Manz Drive
 Lake George MN 56458



website: www.AffinityRealEstate.com | email: info@affinityrealestate.com | office: 218-237-3333 | fax: 218-237-3377



\$319,900
MLS 6013431 Lake Home
36488 New Manz Drive
Lake George MN 56458