



MLS 6052172 Land

\$45,000

2.28 Acres
Raw Land

Lot1 Blk2 Stony Hills Lane
Perham MN 56573

Status: Closed

Description:

New Quiet and Rural Development: Heavily wooded and rolling lots with wildlife all around. Road is currently gravel with tarring assessment included in price of each lot.

Additional Details:

Lot Acres	2.28
Lot Dimensions	311x316
School District	549
Taxes	\$136
Taxes with Assessments	\$136
Tax Year	2023

Additional Features:

Driving Directions:

From Perham: Turn left off of W Main Street onto County Highway 34. In 3.6 miles, turn right onto 400th Avenue. In 0.4 miles turn left onto 450th street and then left on Stony Hills Drive. Turn left on Stony Hills Ln. to Lot 1 on right.



Listed By:
New Horizons Realty of Perham

Affinity Real Estate Inc. participates in the Regional Multiple Listing Service of Minnesota, Inc Broker Reciprocity (sm) program, allowing us to display other broker's listings on our website. All properties are subject to prior sale, change or withdrawal.



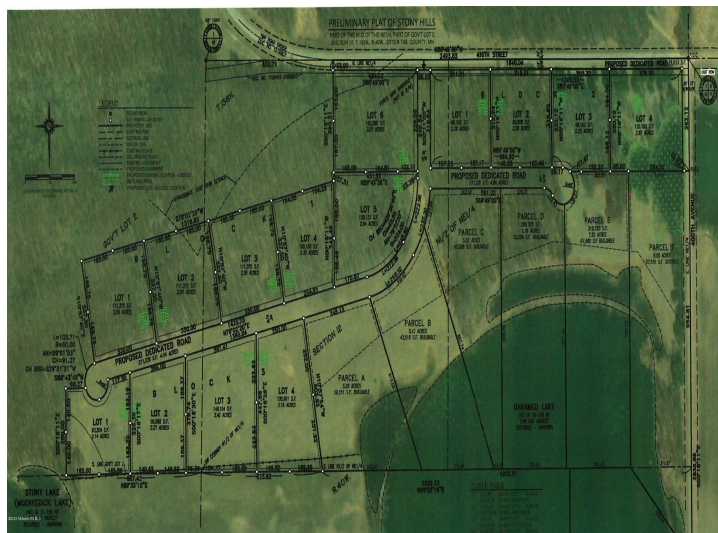
Call Affinity Real Estate

218-237-3333

info@affinityrealestate.com



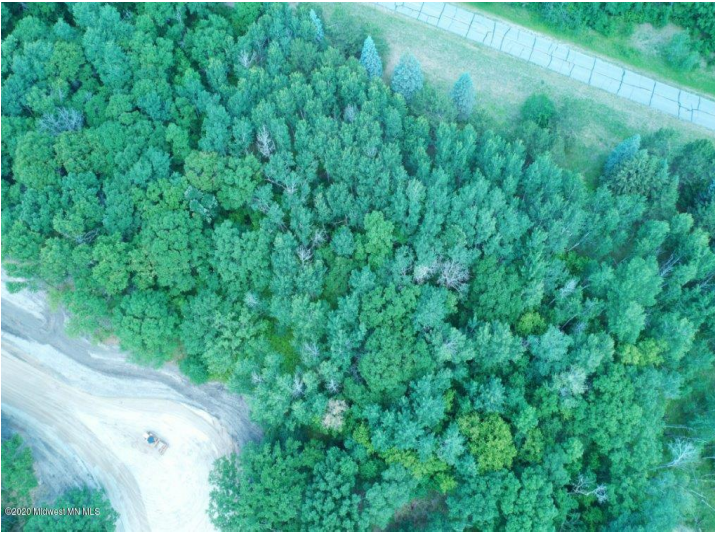
Affinity Real Estate - 600 Park Avenue South - Park Rapids MN 56470



website: www.AffinityRealEstate.com | email: info@affinityrealestate.com | office: 218-237-3333 | fax: 218-237-3377



\$45,000
MLS 6052172 Land
Lot1 Blk2 Stony Hills Lane
Perham MN 56573



website: www.AffinityRealEstate.com | email: info@affinityrealestate.com | office: 218-237-3333 | fax: 218-237-3377



\$45,000
 MLS 6052172 Land
 Lot1 Blk2 Stony Hills Lane
 Perham MN 56573