



MLS 6052181 Land

\$65,000

5.62 Acres
Raw Land

Parcel B Stony Hills Drive
Perham MN 56573

Status: Expired

Description:

New Quiet and Rural Development: Large lots w/ access to unnamed lake, hard bottom frontage and ideal for kayaks/canoeing. Amazing view!

Additional Details:

Lot Acres	5.62
Lot Dimensions	373x619
School District	549
Taxes	\$1
Taxes with Assessments	\$1
Tax Year	2021

Additional Features:

Driving Directions:

From Perham: Turn left off of W Main Street onto County Highway 34. In 3.6 miles, turn right onto 400th Avenue. In 0.4 miles turn left onto 450th street and then left on Stony Hills Drive to Parcel B on left.



Listed By:
New Horizons Realty of Perham

Affinity Real Estate Inc. participates in the Regional Multiple Listing Service of Minnesota, Inc Broker Reciprocity (sm) program, allowing us to display other broker's listings on our website. All properties are subject to prior sale, change or withdrawal.



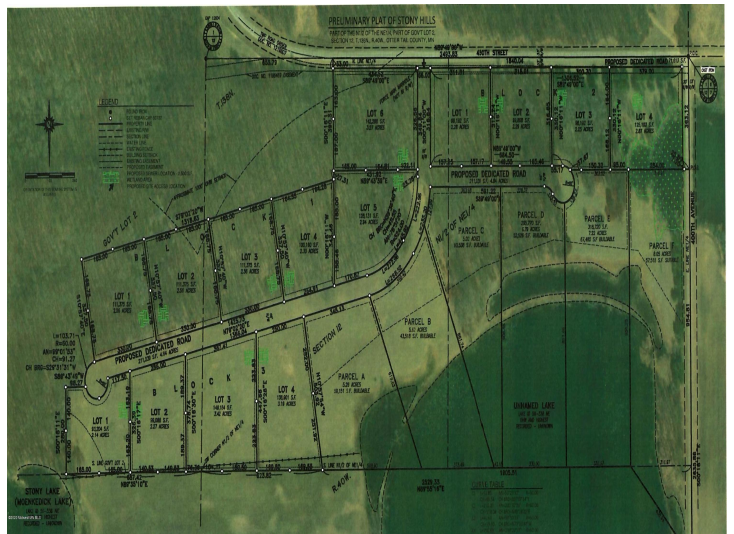
Call Affinity Real Estate

218-237-3333

info@affinityrealestate.com



Affinity Real Estate - 600 Park Avenue South - Park Rapids MN 56470



website: www.AffinityRealEstate.com | email: info@affinityrealestate.com | office: 218-237-3333 | fax: 218-237-3377



\$65,000
MLS 6052181 Land
Parcel B Stony Hills Drive
Perham MN 56573



website: www.AffinityRealEstate.com | email: info@affinityrealestate.com | office: 218-237-3333 | fax:218-237-3377



\$65,000

MLS 6052181 Land
Parcel B Stony Hills Drive
Perham MN 56573